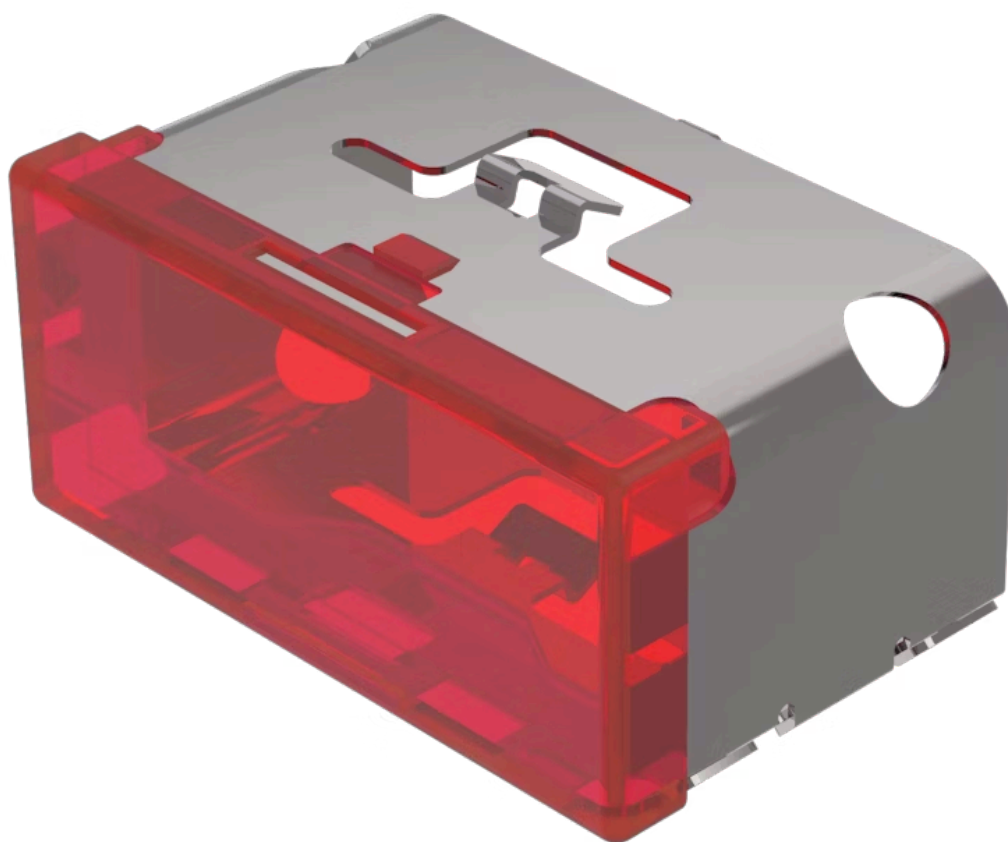


Lens

03-
901.2

Distribution by
Mouser



<https://mouser.eao.com/p/03-901.2>

Your product:



03-901.2 Lens

FRONT

Front form: Rectangular

OPERATING-/INDICATION PART

Lens colour: Red

Lens material: Plastic

Lens illumination: Illuminated

Lens shape: Flush

Lens optics: translucent

MECHANICAL CHARACTERISTIC

Weight: 0.009 kg

CERTIFICATE

REACH: REACH compliant

RoHS: RoHS compliant

OTHER

Short Description: Lens, 18 mm x 38 mm, Illuminated, Red, Flush, Plastic

Dimension: 18 mm x 38 mm

Product attributes: Not recommended for film insert