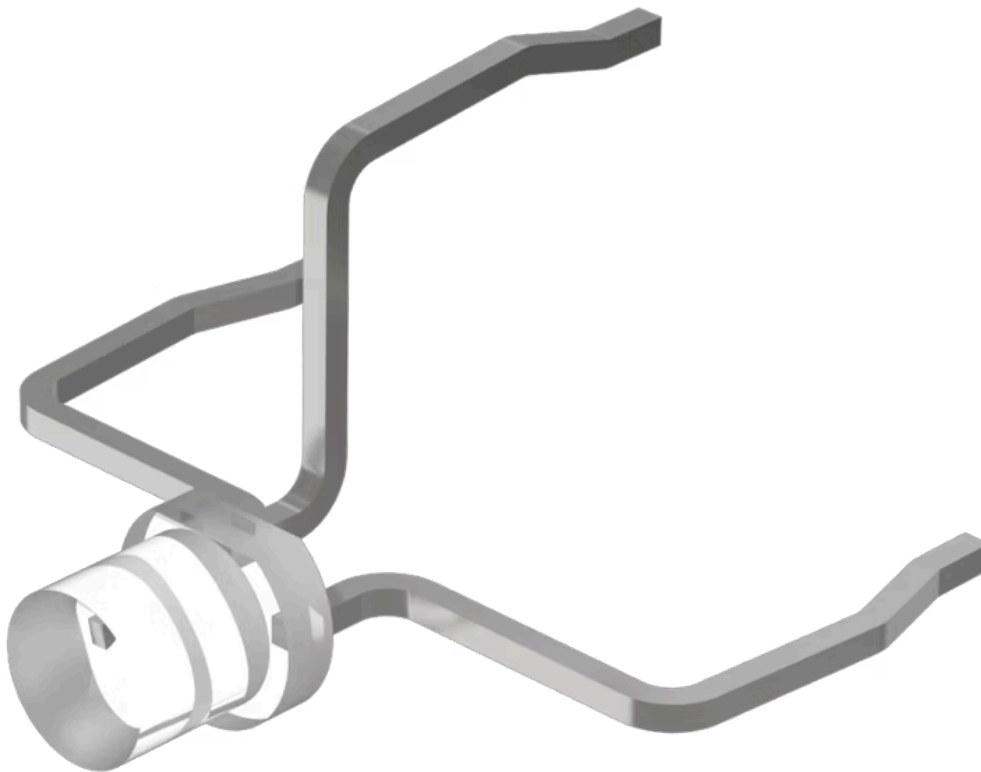


Single- LED

10-
2603.320AT

Distribution by
Mouser



<https://mouser.eao.com/component/10-2603.320A...>

Your product:



10-2603.320AT Single-LED

Loading ...

OPERATING-/INDICATION PART

Illumination colour: Red / Green

ELECTRICAL CHARACTERISTICS

Operating voltage: 2 - 6 V DC

Lumi. Intensity: 1900/4200 mcd

MECHANICAL CHARACTERISTICS

Weight: 0 kg

CERTIFICATE

REACH: REACH compliant

RoHS: RoHS compliant

OTHER

Short Description: Single-LED, T1 Bi-Pin, Red / Green, 2 - 6 V DC

Kind of illumination: Bi-colour-LED

Hints: The customer has to decide what series resistor shall be used to the LED. Luminosity and wave length variations caused by LED manufacturing processes may cause slight differences regarding the illumination. The customer has to decide what resistor shall be used to the LED.

Wiring diagrams:

X3+ X1- X2+

