

# Actuator

14-  
235.025K2

Distribution by  
Mouser



<https://mouser.eao.com/p/14-235.025K2>

Your product:

---



## 14-235.025K2 Actuator

### FRONT

|                              |           |
|------------------------------|-----------|
| <b>Front form:</b>           | Round     |
| <b>Front bezel colour:</b>   | Nature    |
| <b>Front bezel material:</b> | Aluminium |

### MOUNTING

|                       |                |
|-----------------------|----------------|
| <b>Mounting type:</b> | Panel mounting |
|-----------------------|----------------|

### ELECTRICAL CHARACTERISTICS

|  |  |
|--|--|
| <b>Switching voltage and switching current:</b>    | 250 VAC, 5 A (ohmic)<br>250 VAC, 3 A (Soldering terminal)<br>250 VAC, 2 A (inductive, $\cos(\phi) = 0.7$ )<br>220 VDC, 0.1 A (inductive, L:R = 30 ms)<br>110 VDC, 0.2 A (inductive, L:R = 30 ms)<br>60 VDC, 0.7 A (inductive, L:R = 30 ms)<br>24 VDC, 2 A (inductive, L:R = 30 ms) |
| <b>Contacts:</b>                                   | 1 NC / 1 NO  |
| <b>Rated Operational Voltage <math>U_e</math>:</b> | 250 VAC/DC according to EN IEC 61058-1   |
| <b>Switching rating:</b>                           | 250 V @ 3 A  |
| <b>Electrical lifetime:</b>                        | 50 000 cycles of operation   |
| <b>Electric strength:</b>                          | 3000 VAC, 50 Hz, 1 min. between all terminals and earth, according to EN/IEC 61058-1   |
| <b>Protection class:</b>                           | II   |
| <b>Standards:</b>                                  | According to EN/IEC 61058-1  |
| <b>Thermal current <math>I_{th}</math>:</b>        | The maximum current in continuous operation and at ambient temperature not exceeding the quoted maximum values.<br>3 A   |

## MECHANICAL CHARACTERISTIC

|                             |  |
|-----------------------------|--|
| <b>Terminal:</b>            | Soldering terminal   |
| <b>Contact material:</b>    | Gold   |
| <b>Switching action:</b>    | Rest (a) - Maintained  |
| <b>Switching system:</b>    | Snap-action switching element  |
| <b>Switching system:</b>    | Self-cleaning, double-break snap action switching system, 1 normally closed and 1 normally open contact per element. |
| <b>Switching positions:</b> | 2 positions  |
| <b>Switching angle:</b>     | 90° right  |
| <b>Mechanical lifetime:</b> | 1 Mil. cycles of operation   |
| <b>Operating force:</b>     | 5 N ... 8 N, depending on the number of switching elements   |
| <b>Operating Travel:</b>    | ca. 90°  |
| <b>Tightening torque:</b>   | Fixing nut max. 0.25 Nm  |
| <b>Weight:</b>              | 0.029 kg   |

## AMBIENT CONDITION

|                               |   |
|-------------------------------|---|
| <b>IP front protection:</b>   | IP65, according to DIN EN 60529   |
| <b>Operating temperature:</b> | – 25 °C ... + 55 °C, mounted as a block, make sure the heat can escape freely                       |
| <b>Storage temperature:</b>   | – 40 °C ... + 85 °C   |
| <b>Shock resistance:</b>      | Max. 150 m / s <sup>2</sup> , pulse width 11 ms, 3-axis, (semi-sinusoidal as per EN IEC 60068-2-27) |
| <b>Vibration resistance:</b>  | Max. 100 m / s <sup>2</sup> from 10 Hz ... 500 Hz, (sinusoidal EN IEC 60068-2-6)                    |
| <b>Climate resistance:</b>    | Standard condition, as per DIN EN 60068-2-78<br>Standard cyclic, as per DIN IEC 60068-2-30          |

## CERTIFICATE

|                      |  |
|----------------------|--|
| <b>Approbations:</b> | CB (IEC 61058-1), CQC, CSA, DNV, EAC, ENEC (EN 61058-1), UL, VDE |
| <b>Conformities:</b> | CE, UKCA, 2011 / 65 / EC (RoHS), 2014 / 35 / EU (LVD)            |
| <b>REACH:</b>        | REACH compliant  |
| <b>RoHS:</b>         | RoHS compliant   |

## OTHER

|                           |   |
|---------------------------|---|
| <b>Short Description:</b> | Actuator, Round, Nature, Aluminium, anodised, 1 NC / 1 NO, Rest (a) - Maintained, |
|---------------------------|---|

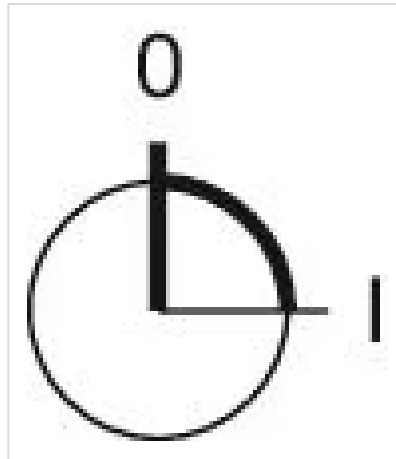
Soldering terminal, IP65, according to DIN EN 60529

**Housing colour:** Black

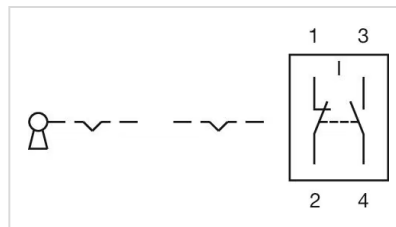
**Hints:** Lock numbers 1001, lock type KABA

**max. number of switching elements:** 1

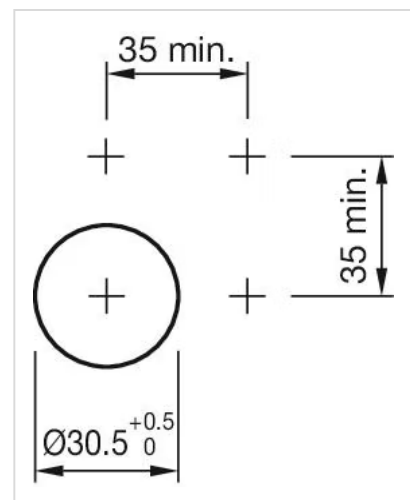
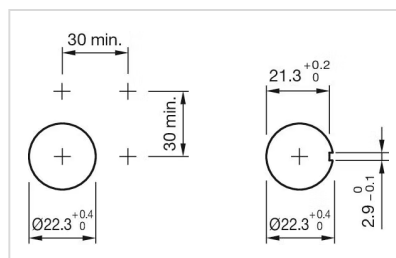
**Switching positions:**



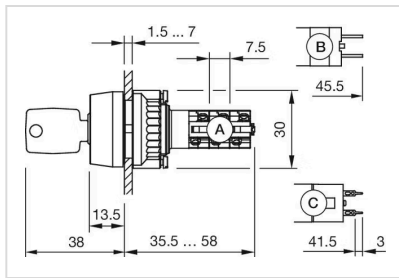
**Wiring diagrams:**



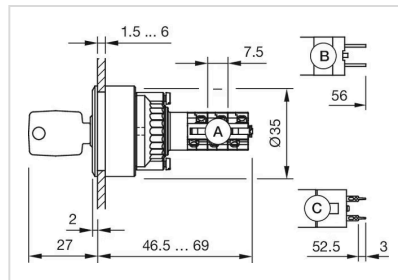
**Mounting cut-outs:**



**Dimension drawings:**



A = Solder terminal  
 B = Plug-in terminal 2.8 mm x 0.5 mm  
 C = Universal terminal 2.0 mm x 0.5 mm



A = Solder terminal  
 B = Plug-in terminal 2.8 x 0.5 mm  
 C = Universal terminal 2.0 mm x 0.5 mm