

Actuator

14-
521.0360

Distribution by
Mouser



<https://mouser.eao.com/p/14-521.0360>

Your product:



14-521.0360 Actuator

FRONT

| | |
|-----------------------|-----------|
| Front form: | Round |
| Front bezel colour: | Nature |
| Front bezel material: | Aluminium |

MOUNTING

| | |
|----------------|----------------|
| Mounting type: | Panel mounting |
|----------------|----------------|

OPERATING-/INDICATION PART

| | |
|-----------------|---------|
| Lever colour: | Black |
| Lever material: | plastic |
| Lever shape: | short |

ELECTRICAL CHARACTERISTICS

| | |
|--|--|
| Switching voltage and switching current: | 100 mA at 42 VAC/VDC |
| Contacts: | 2 NC |
| Switching rating: | 42 V @ 0,1 A |
| Electric strength: | 3000 VAC, 50 Hz, 1 min. between all terminals and earth, according to EN/IEC 61058-1 |
| Protection class: | II |

MECHANICAL CHARACTERISTICS

| | |
|-------------------|--------------------------------|
| Terminal: | Universal terminal, 2 x 0.5 mm |
| Contact material: | |

Gold

| | |
|-----------------------------|--|
| Switching action: | Rest - Maintained |
| Switching system: | Low-level element |
| Switching system: | <p>This low-level switching element was designed for switching low powers in electronic circuits. The mechanism assures reliable switching of loads ranging from a few $\mu\text{A}/\mu\text{V}$ up to 100 mA/ 42 VAC/DC.</p> <p>Single-break momentary contact, as normally open or normally closed with 4 independent points of contact. 2 momentary contacts per switching element; combination of normally open and normally closed is possible.</p> <p>Special features are the long life, extremely short rebound time and stable contact resistance.</p> |
| Switching positions: | 2 positions |
| Switching angle: | 90° right |
| Mechanical lifetime: | 1 Mil. cycles of operation |
| Operating force: | 3 N ... 4 N, depending on the number of switching elements |
| Tightening torque: | Fixing nut max. 0.25 Nm |
| Terminal details 1: | <p>The universal terminals permit these units to be mounted on printed circuit boards (PCB). These terminals can also be used as soldering or plug-in terminals.</p> <p>For these terminals we can also supply a plug-in base which, when soldered on to the board, enables the switch to be plugged in.</p> |
| Wire cross section: | <p>Max. wire diameter 2 wires of 1 mm</p> <p>Max. wire cross-section of stranded cable 2 x 0.75 mm²</p> |
| Weight: | 0.022 kg |

AMBIENT CONDITION

| | |
|-------------------------------|---|
| IP front protection: | IP67, according to DIN EN 60529 |
| Operating temperature: | - 25 °C ... + 55 °C, mounted as a block, make sure the heat can escape freely |
| Storage temperature: | - 40 °C ... + 85 °C |
| Shock resistance: | Max. 150 m / s ² , pulse width 11 ms, 3-axis, (semi-sinusoidal as per EN IEC 60068-2-27) |

CERTIFICATE

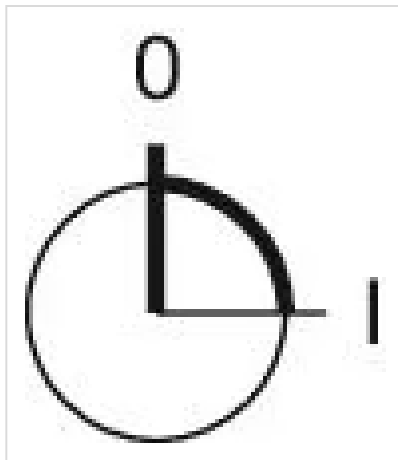
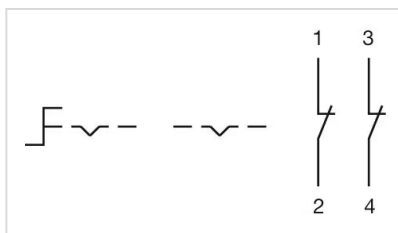
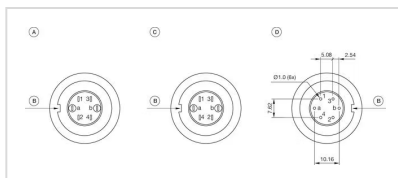
| | |
|----------------------|---|
| Conformities: | 2011 / 65 / EC (RoHS), 2014 / 35 / EU (LVD) |
| REACH: | REACH compliant |
| RoHS: | RoHS compliant |

OTHER

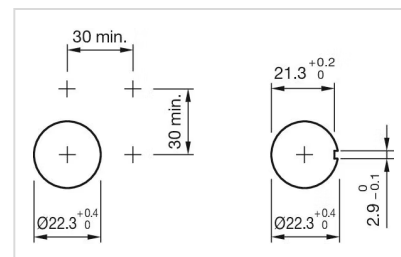
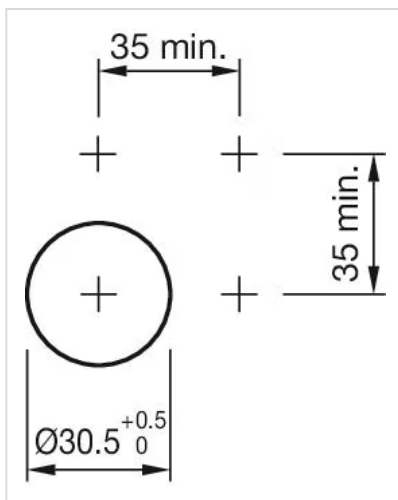
| | |
|---------------------------|--|
| Short Description: | Actuator, non illuminative, Black, short, Round, Nature, Aluminium, anodised, 2 NC, Rest - Maintained, Universal terminal, 2 x 0.5 mm, IP67, according to DIN EN |
|---------------------------|--|

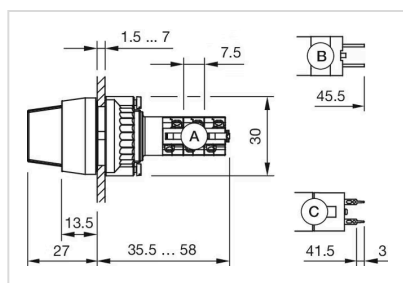
Hints:

The colour of anodised aluminium parts can vary due to technical production reasons

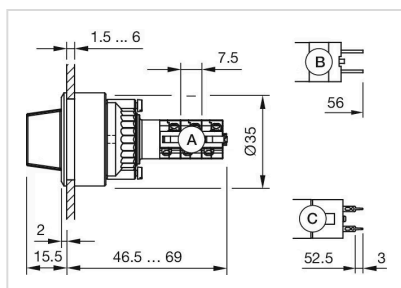
Switching positions:**Wiring diagrams:****Component layouts:**

A = Terminals (rear side)
 B = Anti twist device
 C = Diode block
 D = Drilling plan (component side)

Mounting cut-outs:**Dimension drawings:**



A = Solder terminal
 B = Plug-in terminal 2.8 x 0.5 mm
 C = Universal terminal 2.0 mm x 0.5 mm



A = Solder terminal
 B = Plug-in terminal 2.8 x 0.5 mm
 C = Universal terminal 2.0 mm x 0.5 mm