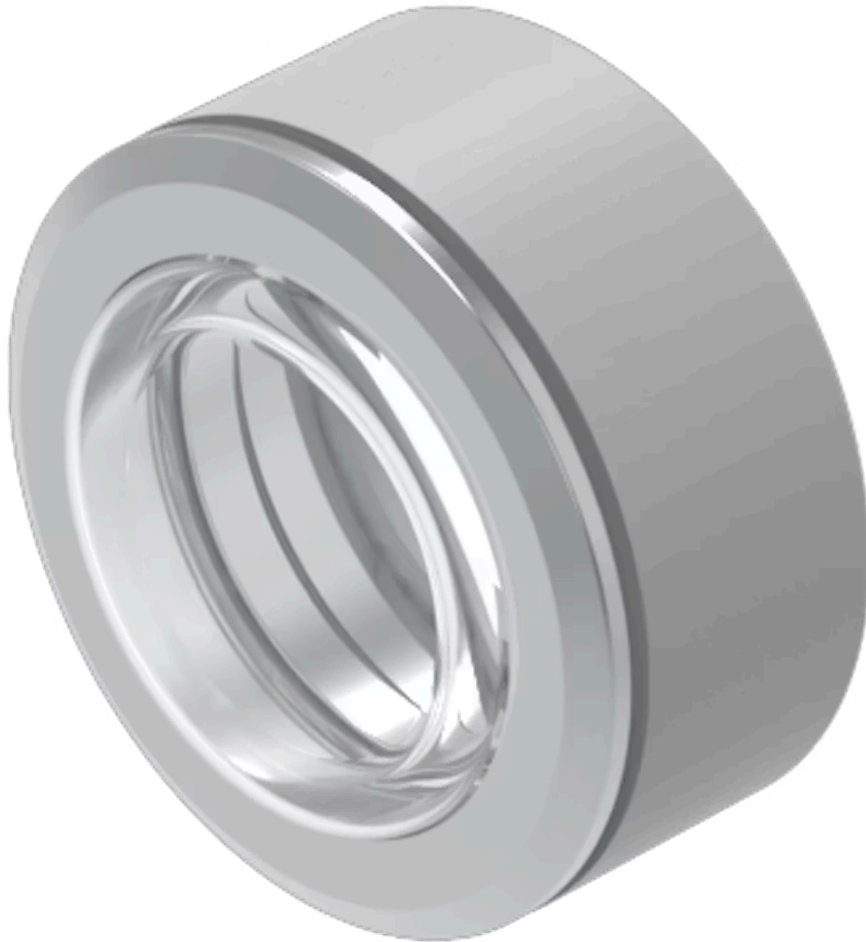


Front
bezel

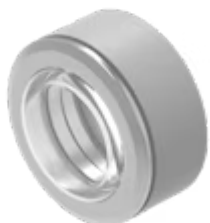
14-955.9E

Distribution by
Mouser



<https://mouser.eao.com/component/14-955.9E/en...>

Your product:



14-955.9E Front bezel

Loading . . .

FRONT

Front dimension:	Ø 35 mm
Front form:	Round
Front bezel colour:	Nature
Front bezel material:	Stainless steel
Front bezel type:	With transparent silicone membrane, resistant to sea water

MOUNTING

Mounting cut-out:	Ø 30.5 mm
Mounting type:	Panel mounting

MECHANICAL CHARACTERISTICS

Weight:	0.03 kg
----------------	---------

CERTIFICATE

REACH:	REACH compliant
RoHS:	RoHS compliant

OTHER

Short Description:	Front bezel, Ø 35 mm, Nature, Stainless steel
Dimension:	Ø 35 mm
Housing colour:	Black
Housing material:	Plastic

Product attributes:

With transparent silicone membrane, resistant to sea water

Hints:

Front bezel to be mounted with a torque of 0.4 Nm onto actuator
Before assembling remove the flat gasket of the switch
The colour of anodised aluminium parts can vary due to technical production reasons

Mounting cut-outs:

