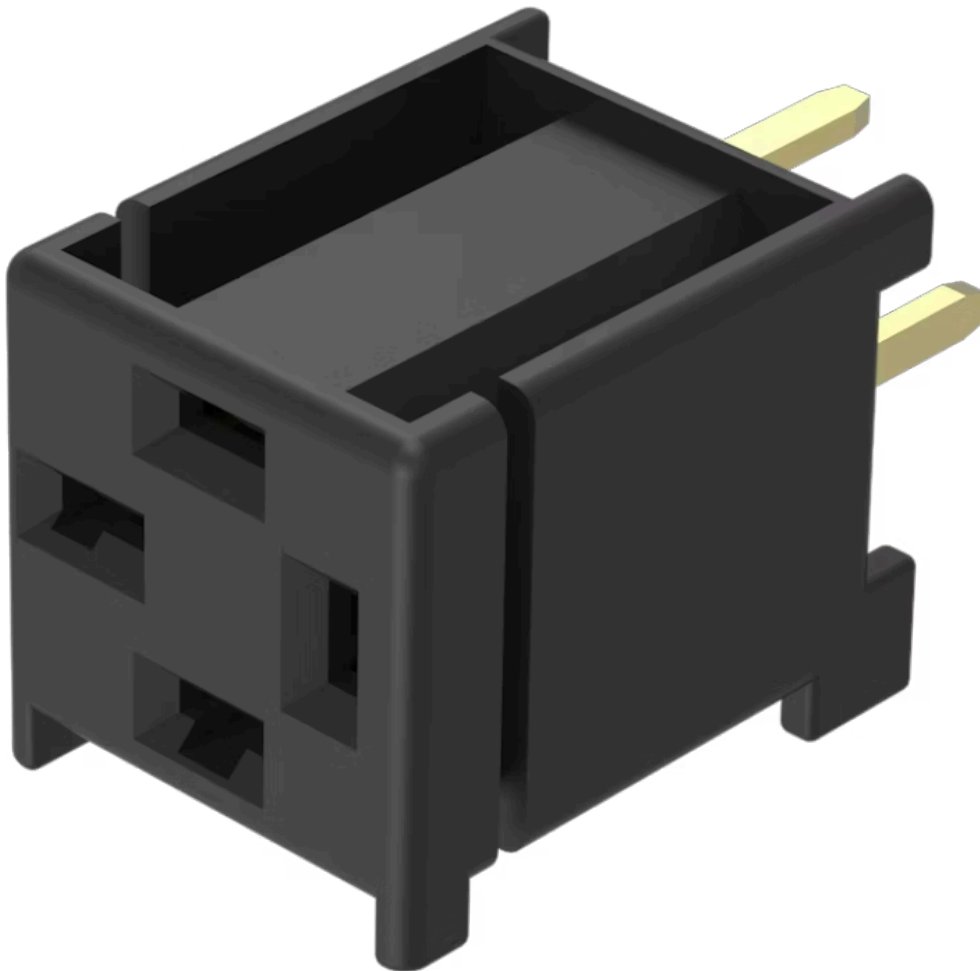


PCB plug-in base

18-945

Distribution by
Mouser



<https://mouser.eao.com/p/18-945>

Your product:



18-945 PCB plug-in base

PRODUCT RANGE

Product Status: Phase-out

MECHANICAL CHARACTERISTIC

Terminal: PCB terminal

Weight: 0.001 kg

OTHER

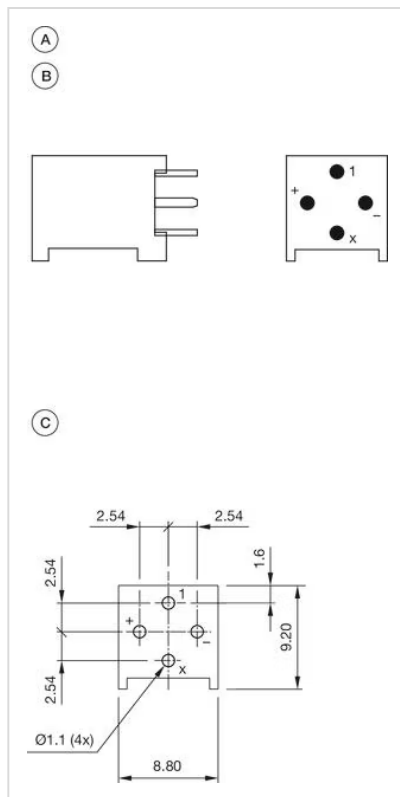
Short Description: PCB plug-in base, PCB terminal, Axial

Titel Accessory: PCB plug-in base

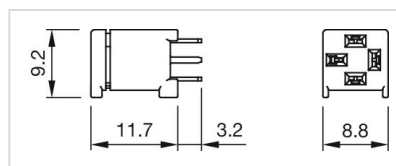
Pins: Axial

Component layouts:

A = Axial socket
 B = Occupancy plan (component side)
 C = Drilling plan (component side)



Dimension drawings:



for Part No. 18-945