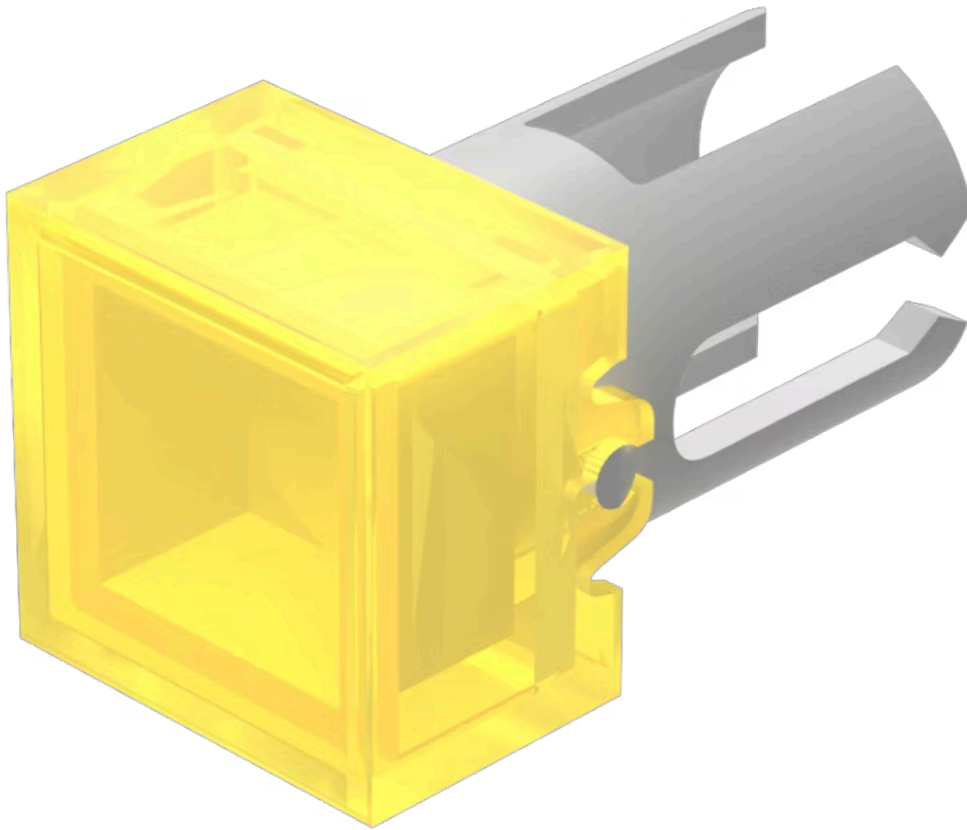


# Lens

19-  
951.4

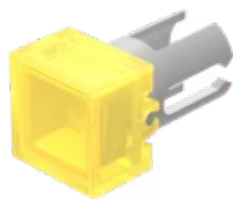
Distribution by  
Mouser



<https://mouser.eao.com/p/19-951.4>

Your product:

---



# 19-951.4 Lens

## FRONT

Front form: Square

## OPERATING-/INDICATION PART

Lens colour: Yellow

Lens material: Plastic

Lens illumination: Illuminated

Lens shape: Flush

Lens optics: transparent

## MECHANICAL CHARATERISTIC

Weight: 0.001 kg

## CERTIFICATE

REACH: REACH compliant

RoHS: RoHS compliant

## OTHER

Short Description: Lens, 7.3 mm x 7.3 mm, Illuminated, Yellow, Flush, Plastic

Dimension: 7.3 mm x 7.3 mm

Product attributes: For film insert