

# Actuator

31-  
475.036

Distribution by  
Mouser



Your product:

---



## 31-475.036 Actuator

*Loading ...*

### PRODUCT RANGE

**Product Status:** Not Recommended for new design

### FRONT

**Front dimension:** Ø 18 mm

**Front form:** Round

**Front bezel colour:** Black

**Front bezel material:** Plastic

### MOUNTING

**Design:** Raised

**Mounting cut-out:** Ø 16 mm

**Mounting type:** Panel mounting

### OPERATING-/INDICATION PART

**Lens illumination:** Illuminated

### ELECTRICAL CHARACTERISTICS

**Contacts:** 1 NO

**Switching rating:** 42 V @ 0,1 A

**Standards:** According to EN/IEC 61058-1

### MECHANICAL CHARACTERISTICS

|                             |   |
|-----------------------------|---|
| <b>Terminal:</b>            | Universal terminal, 2 x 0.5 mm  |
| <b>Contact material:</b>    | Gold  |
| <b>Switching action:</b>    | Maintained  |
| <b>Switching system:</b>    | Low-level element   |
| <b>Mechanical lifetime:</b> | 1 Mil. cycles of operation  |
| <b>Operating force:</b>     | 3 N ... 3.5 N   |
| <b>Operating Travel:</b>    | ca. 3 mm  |
| <b>Tightening torque:</b>   | Fixing nut max. 0.5 Nm  |
| <b>Wire cross section:</b>  | Max. wire diameter 2 wires à 0.8 mm<br>Max. wire cross-section of stranded cable 1 x 0.75 mm <sup>2</sup> |
| <b>Weight:</b>              | 0.006 kg  |

### AMBIENT CONDITION

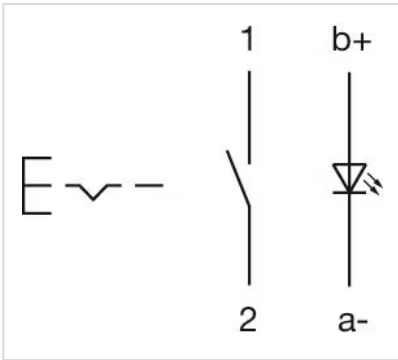
|                               |   |
|-------------------------------|---|
| <b>IP Protection:</b>         | IP40 front side, IP67 with front protective cap   |
| <b>Operating temperature:</b> | - 25 °C ... + 55 °C, mounted as a block, make sure the heat can escape freely                   |
| <b>Storage temperature:</b>   | - 40 °C ... + 85 °C   |
| <b>Climate resistance:</b>    | Standard condition according to IEC 60068-2-3<br>Changing condition according to IEC 60068-2-14 |

### CERTIFICATE

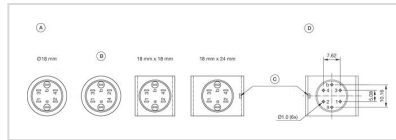
|                      |   |
|----------------------|---|
| <b>Conformities:</b> | CE, UKCA, 2011 / 65 / EC (RoHS), 2014 / 35 / EU (LVD) |
| <b>REACH:</b>        | REACH compliant                                       |
| <b>RoHS:</b>         | RoHS compliant  |

### OTHER

|   |  |
|---|--|
| <b>Short Description:</b>                 | Actuator, Ø 16 mm, Ø 18 mm, Illuminated, Round, Black, Plastic, 1 NO, Maintained, Universal terminal, 2 x 0.5 mm |
| <b>Internal size:</b>                     | Ø 15,8 mm  |
| <b>Housing colour:</b>                    | Black  |
| <b>max. number of switching elements:</b> | 1  |
| <b>Wiring diagrams:</b>                   |  |

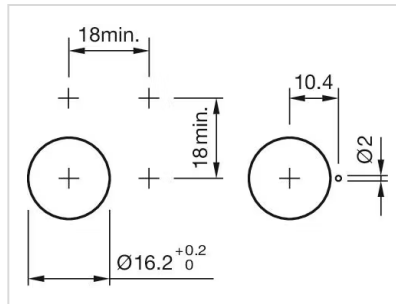


**Component layouts:**

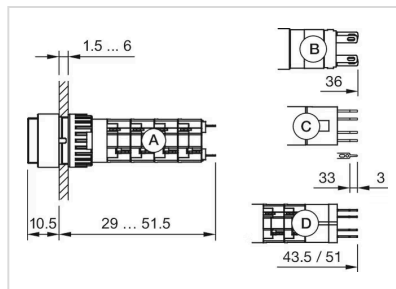


- A = Terminals (rear side)
- B = Diode block
- C = Anti twist device only 18 mm x 24 mm
- D = Drilling plan (component side)

**Mounting cut-outs:**



**Dimension drawings:**



- A = Solder terminal
- B = Plug-in terminal 2.8 mm x 0.5 mm
- C = Universal terminal 2.0 mm x 0.5 mm
- D = Universal-Solder terminal