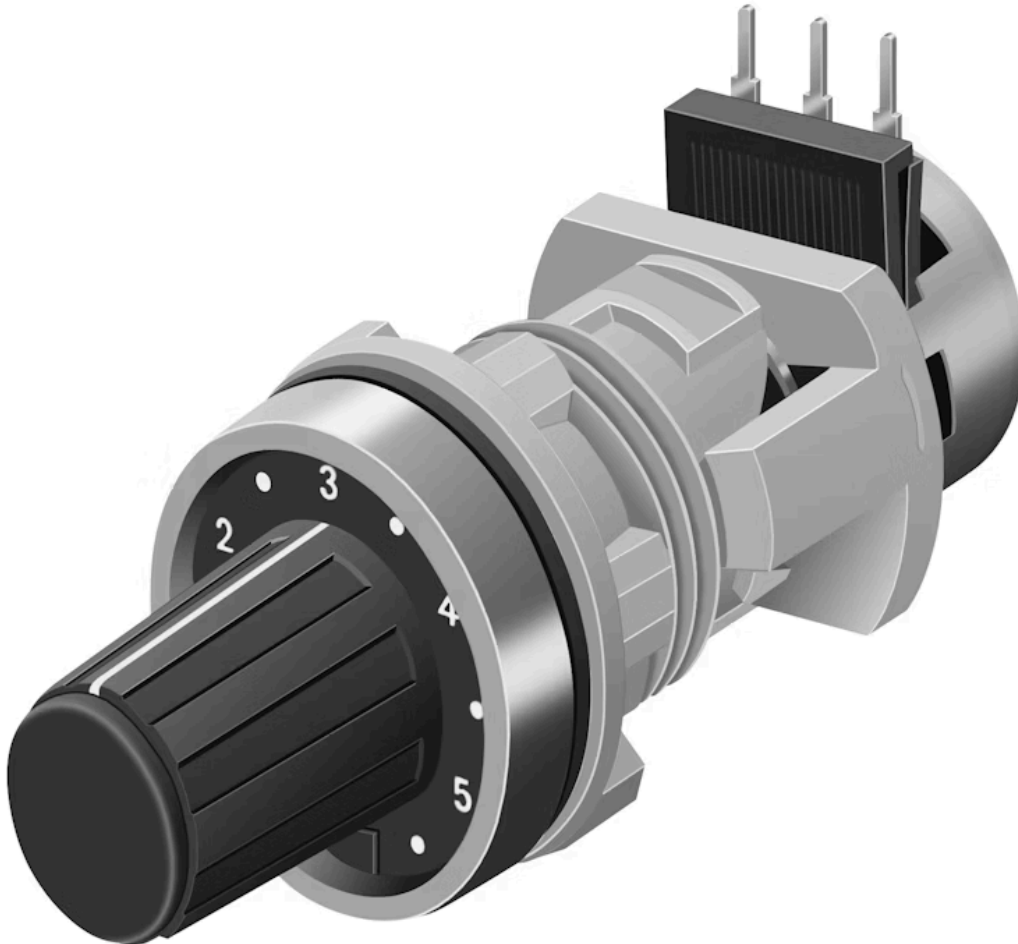


Actuator

44-745.20-
10K1

Distribution by
Mouser



<https://mouser.eao.com/p/44-745.20-10K1>

Your product:



44-745.20-10K1 Actuator

FRONT

Front bezel material: Metal

MOUNTING

Mounting type: Panel mounting

ELECTRICAL CHARACTERISTICS

Power (W): 0.4

Switching rating:

Resistance: 10 kΩ

MECHANICAL CHARACTERISTIC

Terminal: Soldering terminal

Weight: 0.03 kg

CERTIFICATE

REACH: REACH compliant

RoHS: RoHS compliant

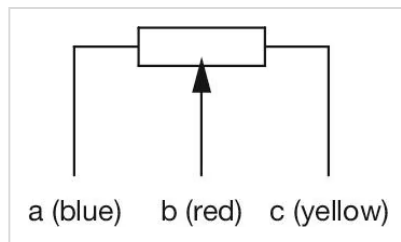
OTHER

Short Description: Actuator, Metal, matt chrome, Soldering terminal

Housing material: Plastic

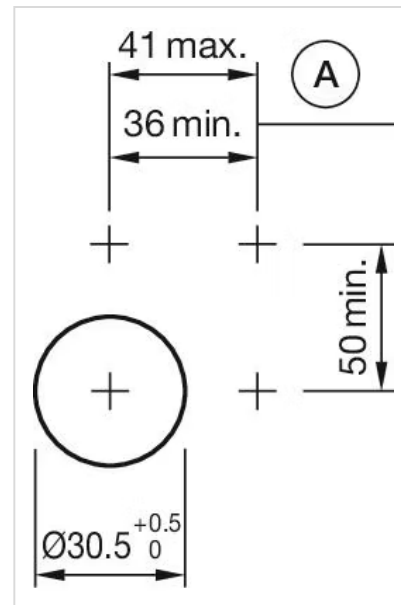
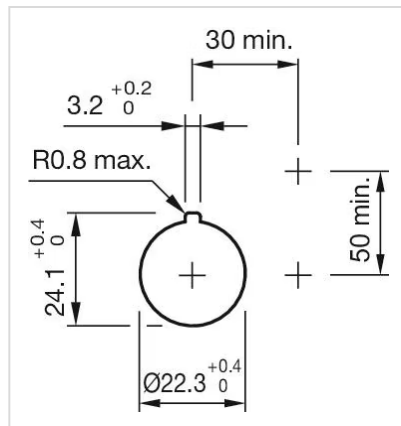
Product attributes: With potentiometer

Wiring diagrams:



A = blue
B = red
C = yellow

Mounting cut-outs:



A = Action range of aligning pins

Dimension drawings:

