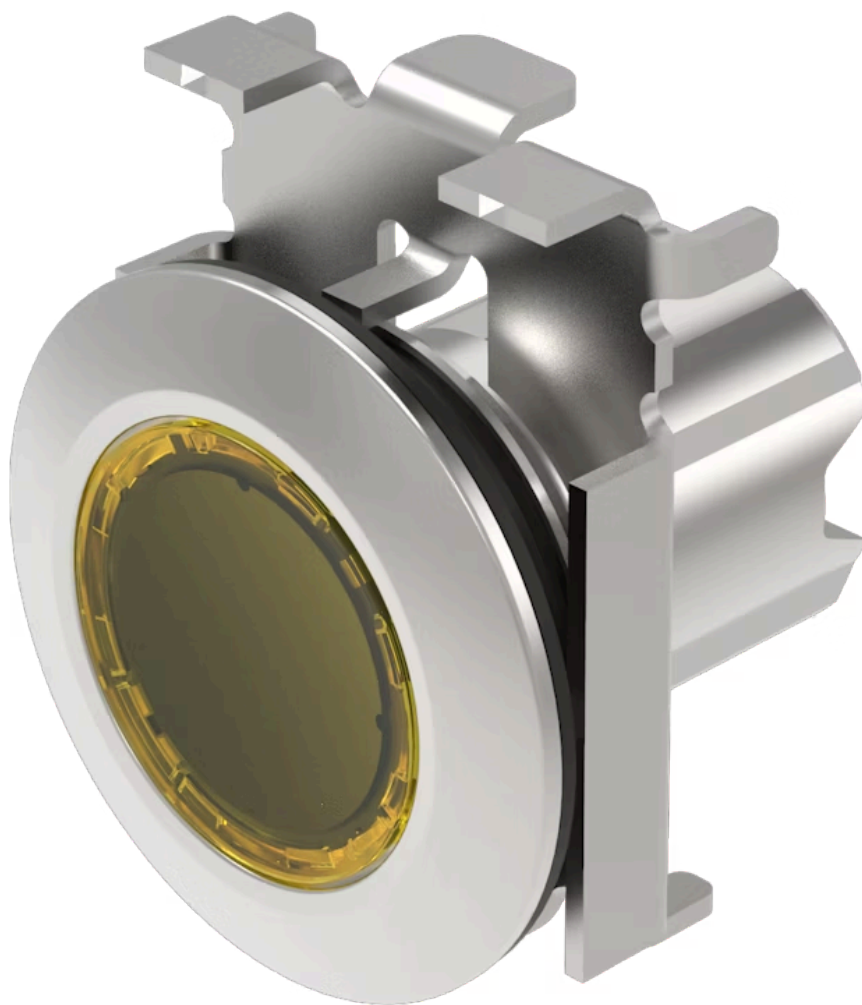


# Actuator

45-  
2231.4FG0.000

Distribution by  
Mouser



<https://mouser.eao.com/component/45-2231.4FG0...>

Your product:

---



## 45-2231.4FG0.000 Actuator

### FRONT

Front dimension:	Ø 38 mm
Front form:	Round
Front bezel colour:	Sand grey
Front bezel material:	Metal

### MOUNTING

Design:	Flush
Mounting cut-out:	Ø 30.5 mm
Mounting type:	Panel mounting

### OPERATING-/INDICATION PART

Lens colour:	Yellow
Lens material:	Plastic
Lens illumination:	Illuminated
Lens shape:	Flush
Lens optics:	transparent
Illumination colour:	Yellow

### MECHANICAL CHARACTERISTICS

Switching action:	Momentary
Switching system:	Slow-make switching element
Mechanical lifetime:	3 Mil. cycles of operation

**Operating frequency:** Max. 3 600/h

**Weight:** 0.073 kg

## AMBIENT CONDITION

**IP front protection:** IP66, IP67, IP69K

**Operating temperature:** – 25 °C ... + 70 °C

**Storage temperature:** – 40 °C ... + 80 °C

**Shock resistance:** According to IEC 60068-2-27: Sinusoidal half-wave 50 g / 11 ms

**Vibration resistance:** According to IEC 60068-2-6: 20 ... 500 Hz: 5 g

**Climate resistance:** During operation according to IEC 60721: 3K6, 3C3, 3S2, 3M6

## CERTIFICATE

**REACH:** REACH compliant

**RoHS:** RoHS compliant

## OTHER

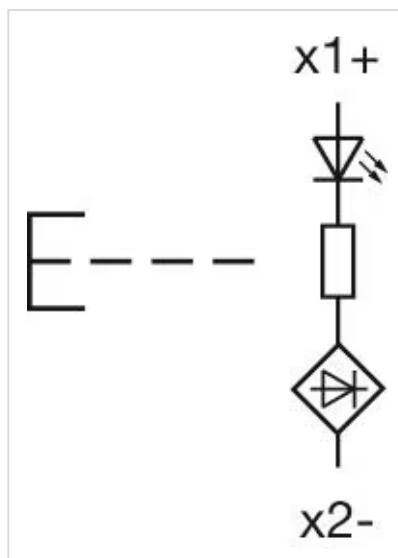
**Short Description:** Actuator, Ø 30.5 mm, Ø 38 mm, Flush, Illuminated, Yellow, Plastic, transparent, Round, Sand grey, Metal, Momentary, IP66, IP67, IP69K, Yellow

**Housing colour:** Silver

**Housing material:** Metal

**Hints:** Front panel thickness 1 ... 6 mm

**Wiring diagrams:**



**Dimension drawings:**

