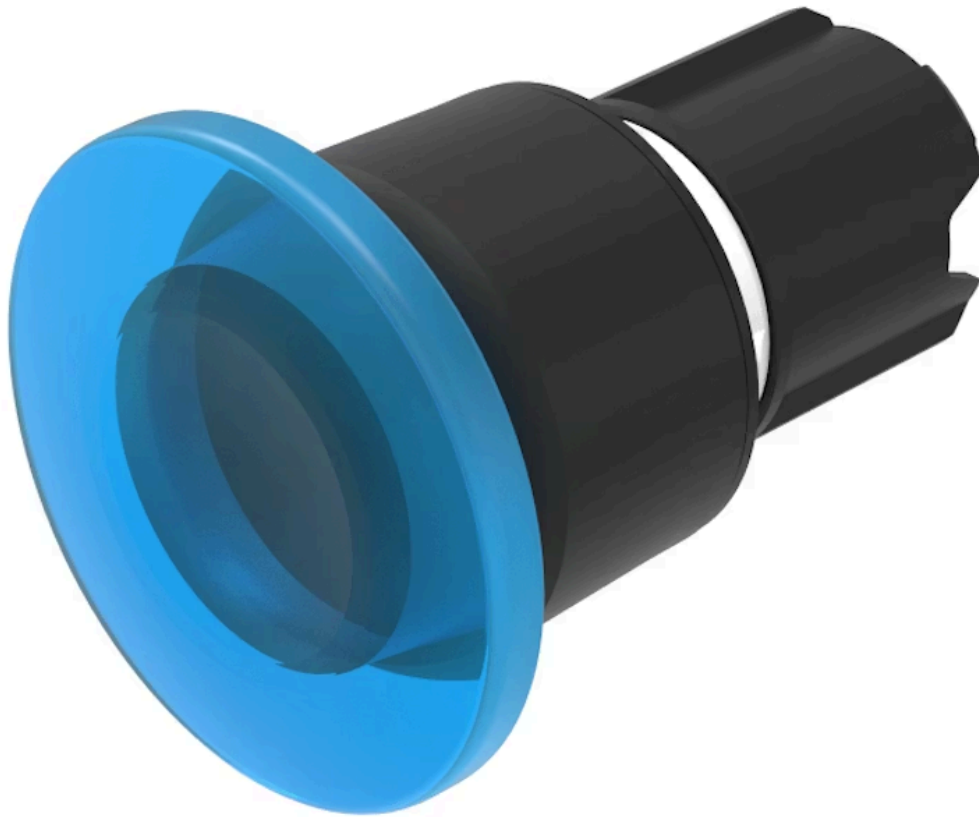


Actuator

45-
2630.19J0.000

Distribution by
Mouser



<https://mouser.eao.com/component/45-2630.19J0...>

Your product:



45-2630.19J0.000 Actuator

Loading ...

FRONT

Front dimension:	Ø 40 mm
Front form:	Round
Front bezel colour:	Black
Front bezel material:	Plastic

MOUNTING

Design:	Raised
Mounting cut-out:	Ø 22.3 mm
Mounting type:	Panel mounting

OPERATING-/INDICATION PART

Lens colour:	Blue
Lens material:	Plastic
Lens illumination:	Illuminated
Lens shape:	Mushroom-head
Lens optics:	transparent

MECHANICAL CHARACTERISTICS

Switching action:	Maintained
Switching system:	Slow-make switching element
Release type:	Pull unlock
Mechanical lifetime:	500 000 cycles of operation

Operating frequency: Max. 1 800/h

Weight: 0.03 kg

AMBIENT CONDITION

IP front protection: IP66, IP67, IP69K

Operating temperature: - 25 °C ... + 70 °C

Storage temperature: - 40 °C ... + 80 °C

Shock resistance: According to IEC 60068-2-27: Sinusoidal half-wave 50 g / 11 ms

Vibration resistance: According to IEC 60068-2-6: 20 ... 500 Hz: 5 g

Climate resistance: During operation according to IEC 60721: 3K6, 3C3, 3S2, 3M6

CERTIFICATE

REACH: REACH compliant

RoHS: RoHS compliant

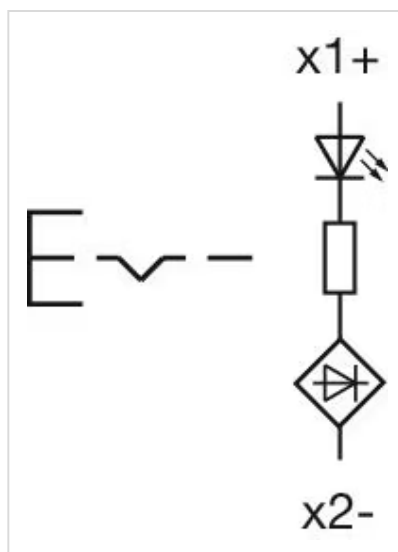
OTHER

Short Description: Actuator, Ø 22.3 mm, Ø 40 mm, Mushroom-head, Illuminated, Blue, Plastic, transparent, Round, Black, Plastic, Maintained, IP66, IP67, IP69K, Pull unlock

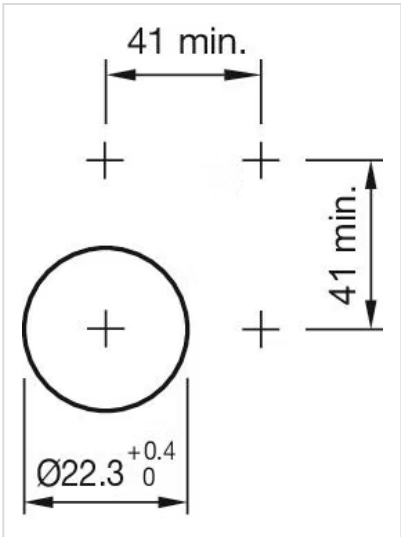
Housing colour: Black

Housing material: Plastic

Wiring diagrams:



Mounting cut-outs:



Dimension drawings:

