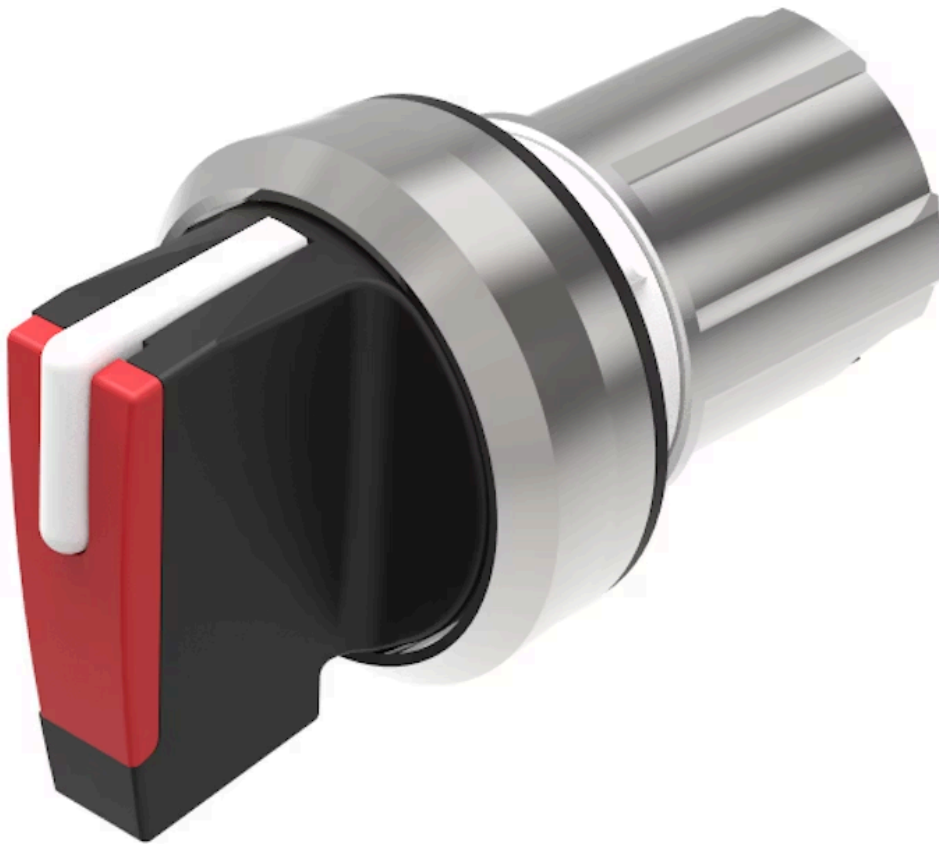


# Actuator

45-  
280S.2C20.003

Distribution by  
Mouser



<https://mouser.eao.com/component/45-280S.2C20...>

Your product:

---



## 45-280S.2C20.003 Actuator

### FRONT

Front dimension:	Ø 29,5 mm
Front form:	Round
Front bezel colour:	Silver
Front bezel material:	Metal

### MOUNTING

Design:	Raised
Mounting cut-out:	Ø 22.3 mm
Mounting type:	Panel mounting

### OPERATING-/INDICATION PART

Lever colour:	Red
Lever material:	plastic
Lever shape:	short

### MECHANICAL CHARACTERISTICS

Switching action:	Momentary - Rest - Momentary
Switching positions:	3 positions
Switching angle:	45° left / 45° right / -45° ... +45°
Mechanical lifetime:	1 Mil. cycles of operation (RCC/RPB)
Operating frequency:	1 800/h
Weight:	0.05 kg

## AMBIENT CONDITION

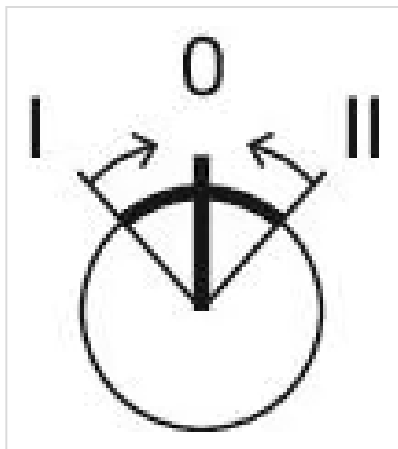
<b>IP front protection:</b>	IP66, IP67, IP69K
<b>Operating temperature:</b>	– 25 °C ... + 70 °C
<b>Storage temperature:</b>	– 40 °C ... + 80 °C
<b>Shock resistance:</b>	According to IEC 60068-2-27: Sinusoidal half-wave 50 g / 11 ms
<b>Vibration resistance:</b>	According to IEC 60068-2-6: 10 ... 500 Hz: 5 g
<b>Climate resistance:</b>	During operation according to IEC 60721: 3K6, 3C3, 3S2, 3M6

## CERTIFICATE

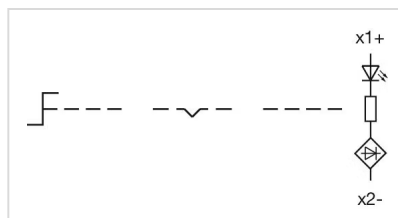
<b>REACH:</b>	REACH compliant
<b>RoHS:</b>	RoHS compliant

## OTHER

<b>Short Description:</b>	Actuator, Ø 22.3 mm, Ø 29,5 mm, optional illuminative, Red, short, Round, Silver, Metal, Momentary - Rest - Momentary, IP66, IP67, IP69K
<b>Housing material:</b>	Metal
<b>Hints:</b>	External diameter of the short lever 32.3 mm
<b>Switching positions:</b>	



## Wiring diagrams:



## Mounting cut-outs:



**Dimension drawings:**

