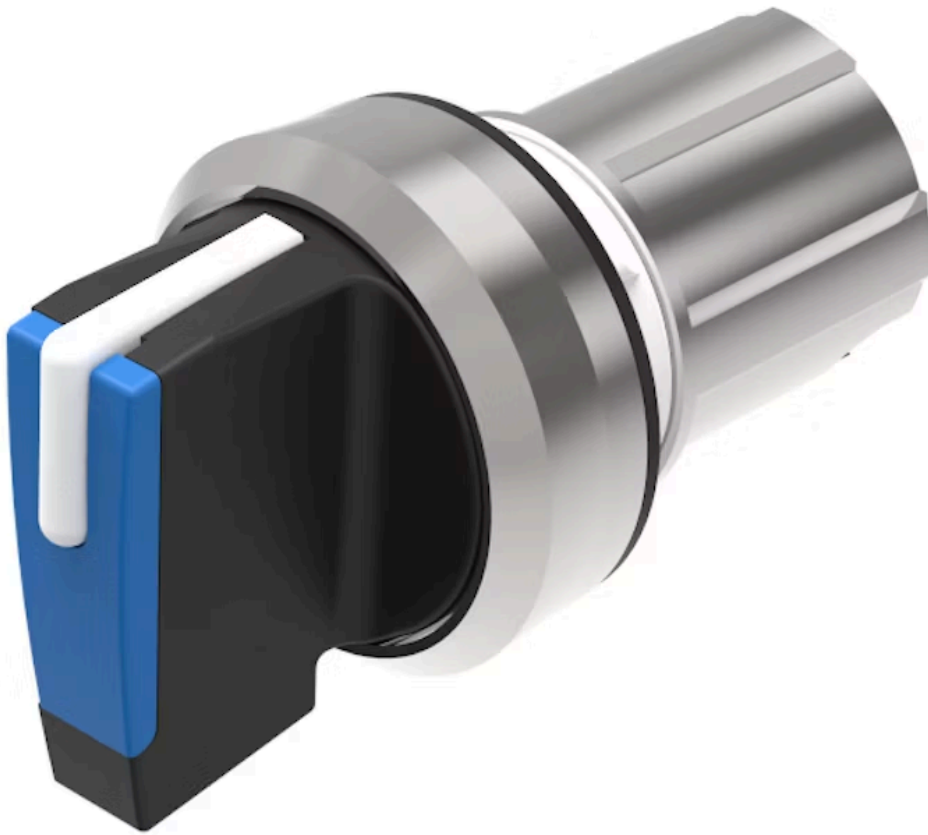


Actuator

45-
280S.2C60.003

Distribution by
Mouser



<https://mouser.eao.com/component/45-280S.2C60...>

Your product:



45-280S.2C60.003 Actuator

Loading ...

FRONT

Front dimension:	Ø 29,5 mm
Front form:	Round
Front bezel colour:	Silver
Front bezel material:	Metal

MOUNTING

Design:	Raised
Mounting cut-out:	Ø 22.3 mm
Mounting type:	Panel mounting

OPERATING-/INDICATION PART

Lever colour:	Blue
Lever material:	plastic
Lever shape:	short

MECHANICAL CHARACTERISTICS

Switching action:	Momentary - Rest - Momentary
Switching positions:	3 positions
Switching angle:	45° left / 45° right / -45° ... +45°
Mechanical lifetime:	1 Mil. cycles of operation
Operating frequency:	1 800/h
Weight:	0.052 kg

AMBIENT CONDITION

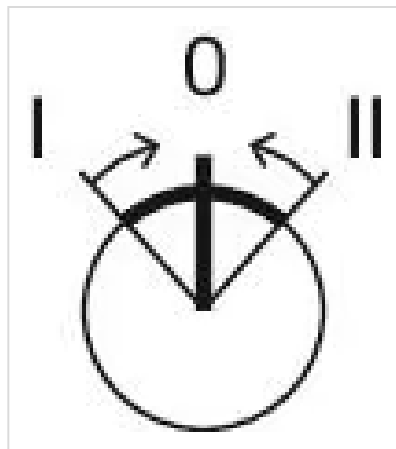
IP front protection:	IP66, IP67, IP69K
Operating temperature:	- 25 °C ... + 70 °C
Storage temperature:	- 40 °C ... + 80 °C
Shock resistance:	According to IEC 60068-2-27: Sinusoidal half-wave 50 g / 11 ms
Vibration resistance:	According to IEC 60068-2-6: 10 ... 500 Hz: 5 g
Climate resistance:	During operation according to IEC 60721: 3K6, 3C3, 3S2, 3M6

CERTIFICATE

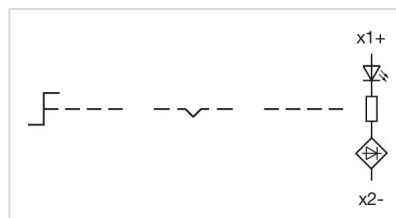
REACH:	REACH compliant
RoHS:	RoHS compliant

OTHER

Short Description:	Actuator, Ø 22.3 mm, Ø 29,5 mm, optional illuminative, Blue, short, Round, Silver, Metal, Momentary - Rest - Momentary, IP66, IP67, IP69K
Housing material:	Metal
Hints:	External diameter of the short lever 32.3 mm
Switching positions:	



Wiring diagrams:



Mounting cut-outs:



Dimension drawings:

