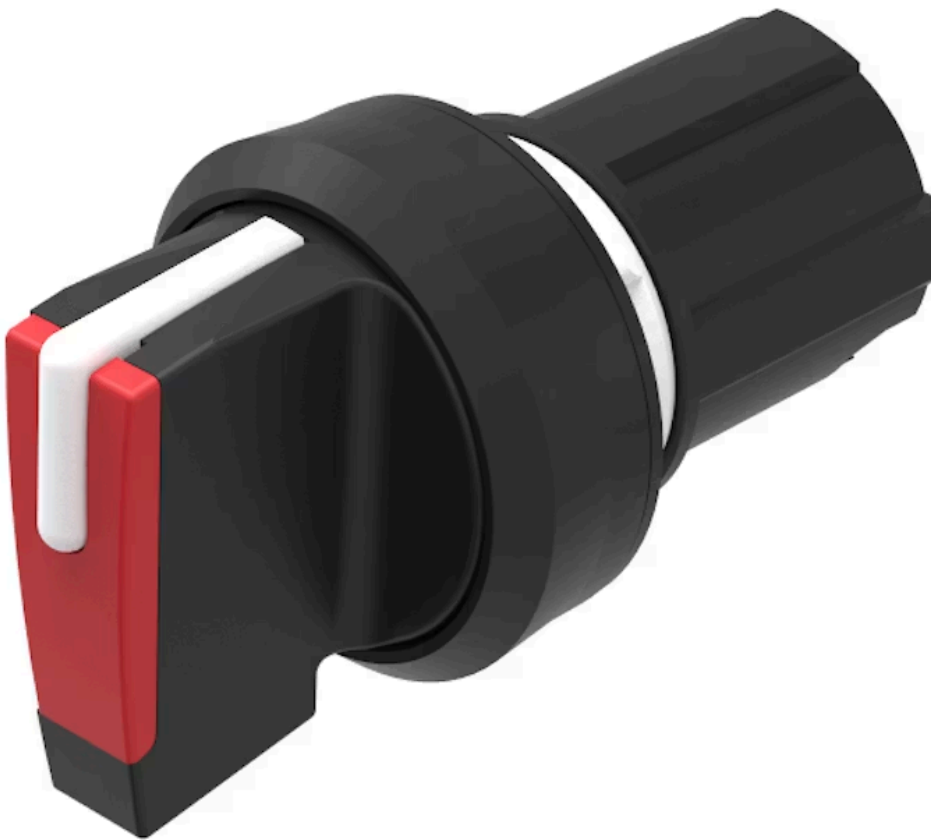


# Actuator

45-  
2819.1C20.003

Distribution by  
Mouser



<https://mouser.eao.com/component/45-2819.1C20...>

Your product:

---



## 45-2819.1C20.003 Actuator

*Loading ...*

### FRONT

<b>Front dimension:</b>	Ø 29,5 mm
<b>Front form:</b>	Round
<b>Front bezel colour:</b>	Black
<b>Front bezel material:</b>	Plastic

### MOUNTING

<b>Design:</b>	Raised
<b>Mounting cut-out:</b>	Ø 22.3 mm
<b>Mounting type:</b>	Panel mounting

### OPERATING-/INDICATION PART

<b>Lever colour:</b>	Red
<b>Lever material:</b>	plastic
<b>Lever shape:</b>	short

### MECHANICAL CHARACTERISTICS

<b>Switching action:</b>	Maintained - Rest - Maintained
<b>Switching positions:</b>	3 positions
<b>Switching angle:</b>	45° left / 45° right / -45° ... +45°
<b>Mechanical lifetime:</b>	1 Mil. cycles of operation
<b>Operating frequency:</b>	1 800/h
<b>Weight:</b>	0.021 kg

## AMBIENT CONDITION

<b>IP front protection:</b>	IP66, IP67, IP69K
<b>Operating temperature:</b>	- 25 °C ... + 70 °C
<b>Storage temperature:</b>	- 40 °C ... + 80 °C
<b>Shock resistance:</b>	According to IEC 60068-2-27: Sinusoidal half-wave 50 g / 11 ms
<b>Vibration resistance:</b>	According to IEC 60068-2-6: 10 ... 500 Hz: 5 g
<b>Climate resistance:</b>	During operation according to IEC 60721: 3K6, 3C3, 3S2, 3M6

## CERTIFICATE

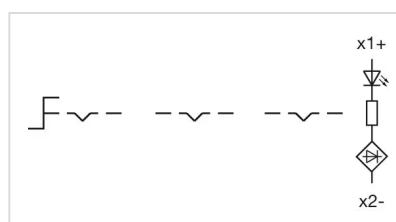
<b>REACH:</b>	REACH compliant
<b>RoHS:</b>	RoHS compliant

## OTHER

<b>Short Description:</b>	Actuator, Ø 22.3 mm, Ø 29,5 mm, optional illuminative, Red, short, Round, Black, Plastic, Maintained - Rest - Maintained, IP66, IP67, IP69K
<b>Housing material:</b>	Plastic
<b>Hints:</b>	External diameter of the short lever 32.3 mm
<b>Switching positions:</b>	



## Wiring diagrams:



**Mounting cut-outs:**



**Dimension drawings:**

