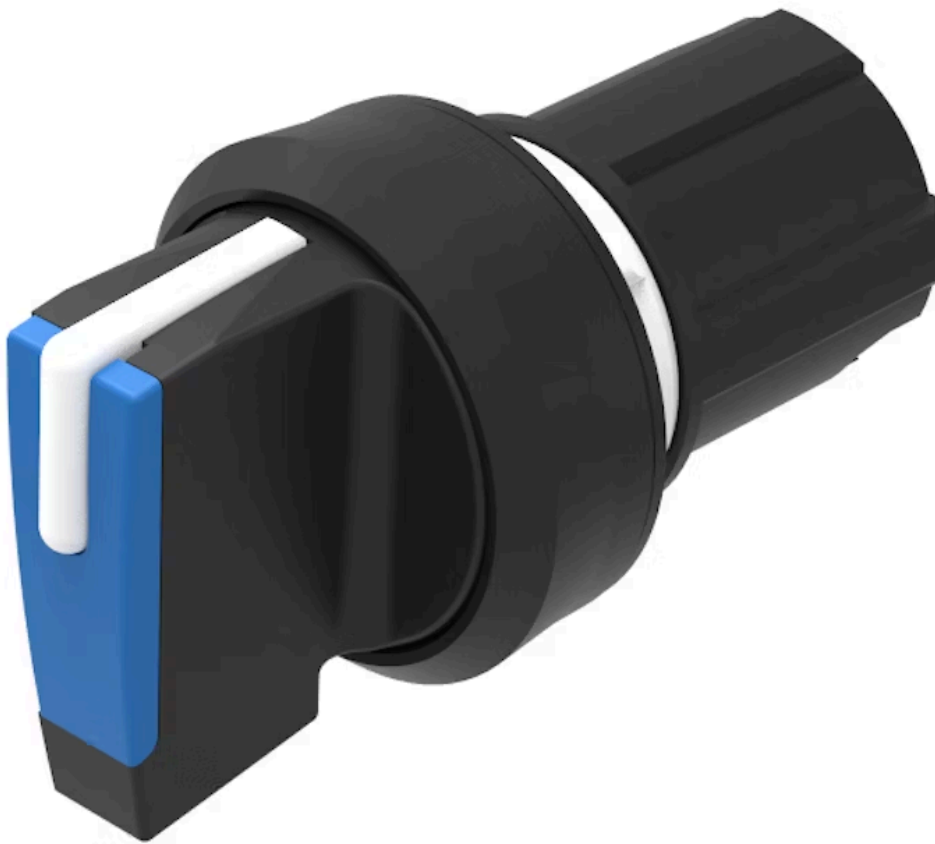


# Actuator

45-  
2828.1C60.001

Distribution by  
Mouser



<https://mouser.eao.com/p/45-2828.1C60.001>

Your product:

---



## 45-2828.1C60.001 Actuator

### FRONT

Front dimension:	Ø 29,5 mm
Front form:	Round
Front bezel colour:	Black
Front bezel material:	Plastic

### MOUNTING

Design:	Raised
Mounting cut-out:	Ø 22.3 mm
Mounting type:	Panel mounting

### OPERATING-/INDICATION PART

Lever colour:	Blue
Lever material:	plastic
Lever shape:	short

### ELECTRICAL CHARACTERISTICS

Switching rating:

### MECHANICAL CHARACTERISTIC

Switching action:	Rest - Maintained
Switching positions:	2 positions
Switching angle:	90° right / -45° ... +45°

<b>Mechanical lifetime:</b>	1 Mil. cycles of operation
<b>Operating frequency:</b>	1 800/h
<b>Weight:</b>	0.026 kg

## AMBIENT CONDITION

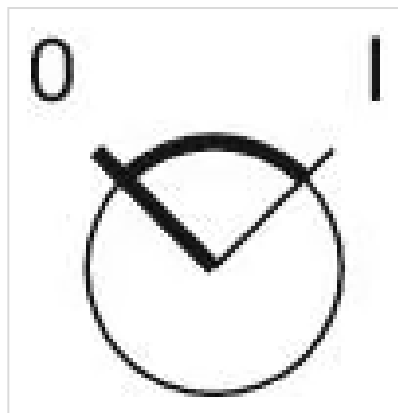
<b>IP front protection:</b>	IP66, IP67, IP69K
<b>Operating temperature:</b>	– 25 °C ... + 70 °C
<b>Storage temperature:</b>	– 40 °C ... + 80 °C
<b>Shock resistance:</b>	According to IEC 60068-2-27: Sinusoidal half-wave 50 g / 11 ms
<b>Vibration resistance:</b>	According to IEC 60068-2-6: 10 ... 500 Hz: 5 g
<b>Climate resistance:</b>	During operation according to IEC 60721: 3K6, 3C3, 3S2, 3M6

## CERTIFICATE

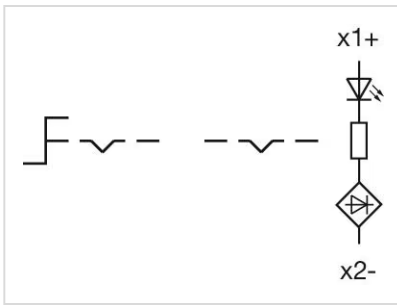
<b>REACH:</b>	REACH compliant
<b>RoHS:</b>	RoHS compliant

## OTHER

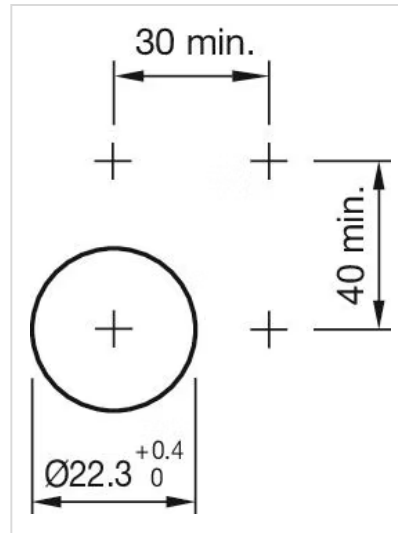
<b>Short Description:</b>	Actuator, Ø 22.3 mm, Ø 29,5 mm, optional illuminative, Blue, short, Round, Black, Plastic, Rest - Maintained, IP66, IP67, IP69K
<b>Housing material:</b>	Plastic
<b>Hints:</b>	External diameter of the short lever 32.3 mm
<b>Switching positions:</b>	



## Wiring diagrams:



**Mounting cut-outs:**



**Dimension drawings:**

