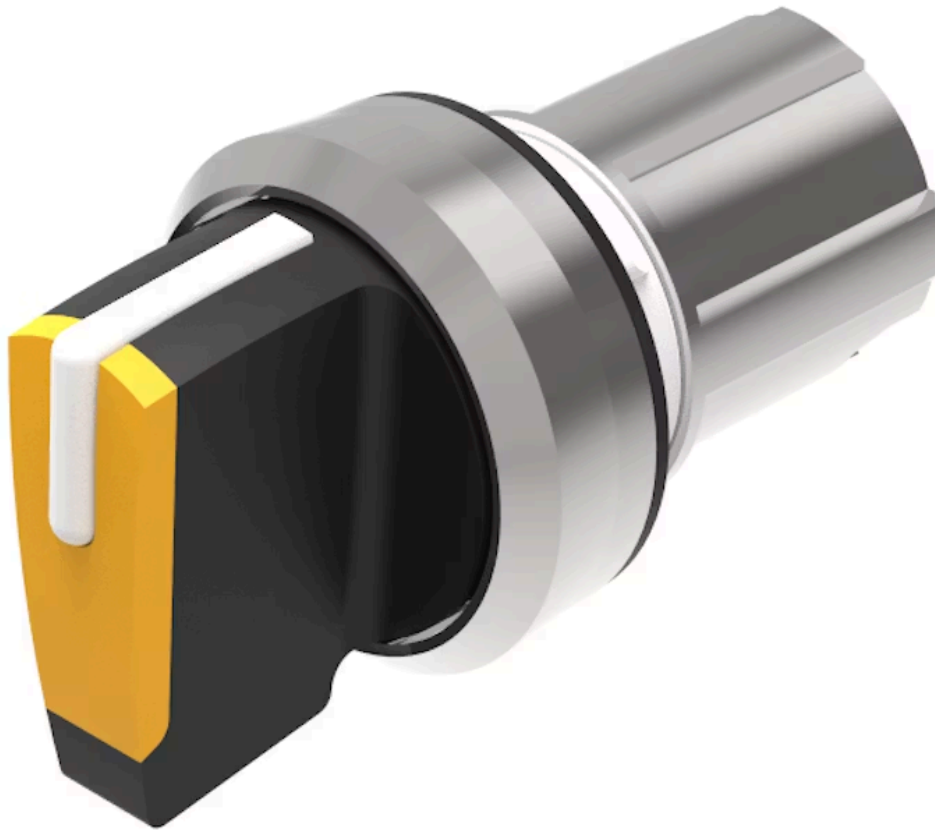


Actuator

45-
2828.2C30.001

Distribution by
Mouser



<https://mouser.eao.com/component/45-2828.2C30...>

Your product:



45-2828.2C30.001 Actuator

Loading ...

FRONT

| | |
|------------------------------|-----------|
| Front dimension: | Ø 29,5 mm |
| Front form: | Round |
| Front bezel colour: | Silver |
| Front bezel material: | Metal |

MOUNTING

| | |
|--------------------------|----------------|
| Design: | Raised |
| Mounting cut-out: | Ø 22.3 mm |
| Mounting type: | Panel mounting |

OPERATING-/INDICATION PART

| | |
|------------------------|---------|
| Lever colour: | Amber |
| Lever material: | plastic |
| Lever shape: | short |

MECHANICAL CHARACTERISTICS

| | |
|-----------------------------|----------------------------|
| Switching action: | Rest - Maintained |
| Switching positions: | 2 positions |
| Switching angle: | 90° right / -45° ... +45° |
| Mechanical lifetime: | 1 Mil. cycles of operation |
| Operating frequency: | 1 800/h |
| Weight: | 0.051 kg |

AMBIENT CONDITION

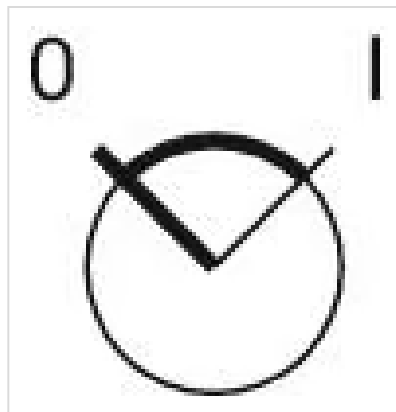
| | |
|-------------------------------|--|
| IP front protection: | IP66, IP67, IP69K |
| Operating temperature: | - 25 °C ... + 70 °C |
| Storage temperature: | - 40 °C ... + 80 °C |
| Shock resistance: | According to IEC 60068-2-27: Sinusoidal half-wave 50 g / 11 ms |
| Vibration resistance: | According to IEC 60068-2-6: 10 ... 500 Hz: 5 g |
| Climate resistance: | During operation according to IEC 60721: 3K6, 3C3, 3S2, 3M6 |

CERTIFICATE

| | |
|---------------|-----------------|
| REACH: | REACH compliant |
| RoHS: | RoHS compliant |

OTHER

| | |
|-----------------------------|---|
| Short Description: | Actuator, Ø 22.3 mm, Ø 29,5 mm, optional illuminative, Amber, short, Round, Silver, Metal, Rest - Maintained, IP66, IP67, IP69K |
| Housing material: | Metal |
| Hints: | External diameter of the short lever 32.3 mm |
| Switching positions: | |



Wiring diagrams:



Mounting cut-outs:



Dimension drawings:

