

Actuator

45-
2H00.1016.000

Distribution by
Mouser



<https://mouser.eao.com/p/45-2H00.1016.000>

Your product:



45-2H00.1016.000 Actuator

FRONT

Front dimension: Ø 29,5 mm

Front form: Round

MOUNTING

Design: Raised

Mounting cut-out: Ø 22.3 mm

Mounting type: Panel mounting

ELECTRICAL CHARACTERISTICS

Operating voltage: 24 V AC/DC

Rated Operational Voltage U_e:
At AC: rated value 24 ... 24 V
At DC: rated value 24 ... 24 V

Insulation voltage: Rated value 320 V

Surge voltage resistance: Rated value 4 kV

Pollution degree: 3

MECHANICAL CHARACTERISTICS

Terminal: Screw terminal

Tightening torque: 0.8 ... 1 Nm for screw terminal

Terminal details 1:
– With end sleeves 2 x (0.5 ... 0.75 mm²)
– Without end sleeves 2 x (0.5 ... 1.5 mm²)
Solid

Terminal details 2:
– Without end sleeves 2 x (0.5 ... 0.75 mm²)
– With end sleeves 2 x (0.5 ... 1.5 mm²)
Finely stranded
– For AWG cables for auxiliary contacts 2 x (18 ... 14)

Weight: 0.001 kg

ACOUSTICAL CHARACTERISTICS

Tone frequency: Approx. 2.4 kHz continuous tone only

AMBIENT CONDITION

Operating temperature: – 25 °C ... + 70 °C

Storage temperature: – 40 °C ... + 80 °C

Shock resistance: According to IEC 60068-2-27: Sinusoidal half-wave 50 g / 11 ms

Vibration resistance: According to IEC 60068-2-6: 10 ... 500 Hz: 5 g

Climate resistance: During operation according to IEC 60721: 3B2, 3K6, 3S2, 3M6

CERTIFICATE

REACH: REACH compliant

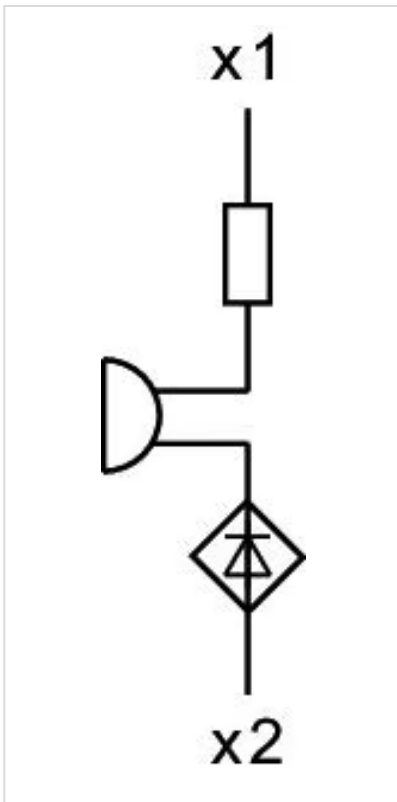
RoHS: RoHS compliant

OTHER

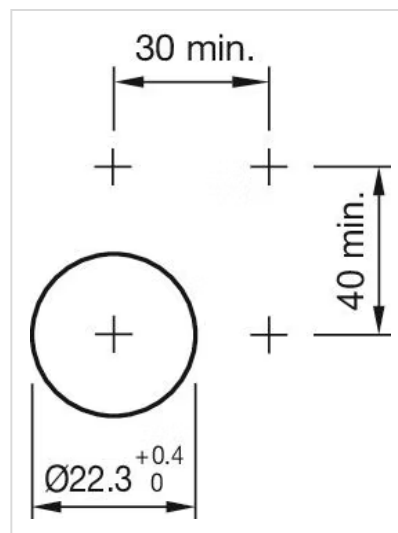
Short Description: Actuator, Ø 22.3 mm, Ø 29,5 mm, Round, Screw terminal

Housing material: Plastic

Wiring diagrams:



Mounting cut-outs:



Dimension drawings:

