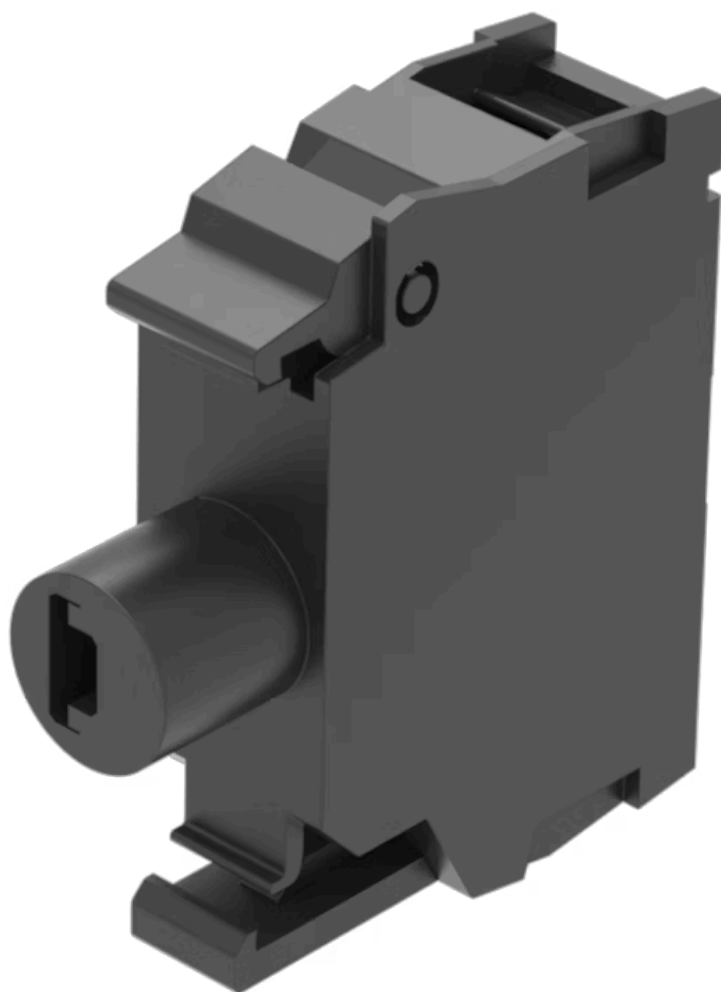


# Illumination element

45-320.1N12

Distribution by  
Mouser



<https://mouser.eao.com/p/45-320.1N12>

Your product:

---



## 45-320.1N12

### Illumination element

#### PRODUCT RANGE

**Product Status:** Phase-out

#### MOUNTING

**Component mounting type:** Front mounting

#### OPERATING-/INDICATION PART

**Illumination colour:** White

#### ELECTRICAL CHARACTERISTICS

**Operating voltage:** 24 - 240 V AC/DC

**Surge voltage resistance:** 4 kV

**Lumi. Intensity:** 900 - 1400 mcd

#### MECHANICAL CHARACTERISTIC

**Terminal:** Screw terminal

**Terminal details 1:** Solid 2 x (1.0 ... 1.5mm<sup>2</sup>)  
– With end sleeves 2 x (0.5 ... 0.75 mm<sup>2</sup>)

**Terminal details 2:** Finely stranded  
– Without end sleeves 2 x (0.5 ... 0.75 mm<sup>2</sup>)  
– Without end sleeves 2 x (0.5 ... 1.5 mm<sup>2</sup>)  
– For AWG cables for auxiliary contacts 2 x (18 ... 14)

**Weight:** 0.011 kg

#### CERTIFICATE

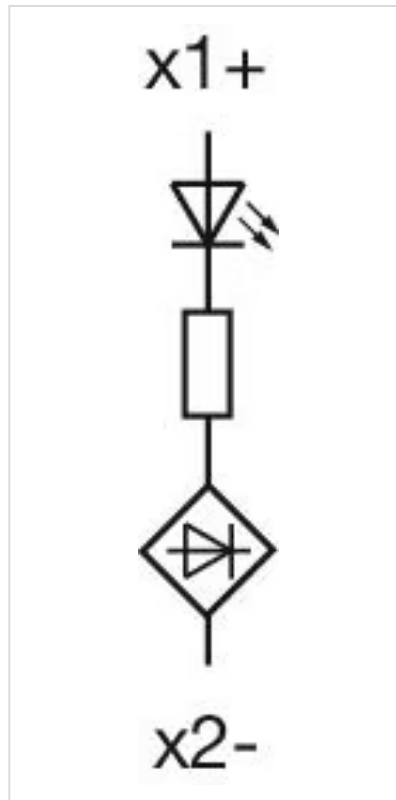
**REACH:** REACH compliant

**RoHS:** RoHS compliant

## OTHER

**Short Description:** Illumination element, Screw terminal, White, 24 - 240 V AC/DC, Front mounting

**Wiring diagrams:**



**Dimension drawings:**

