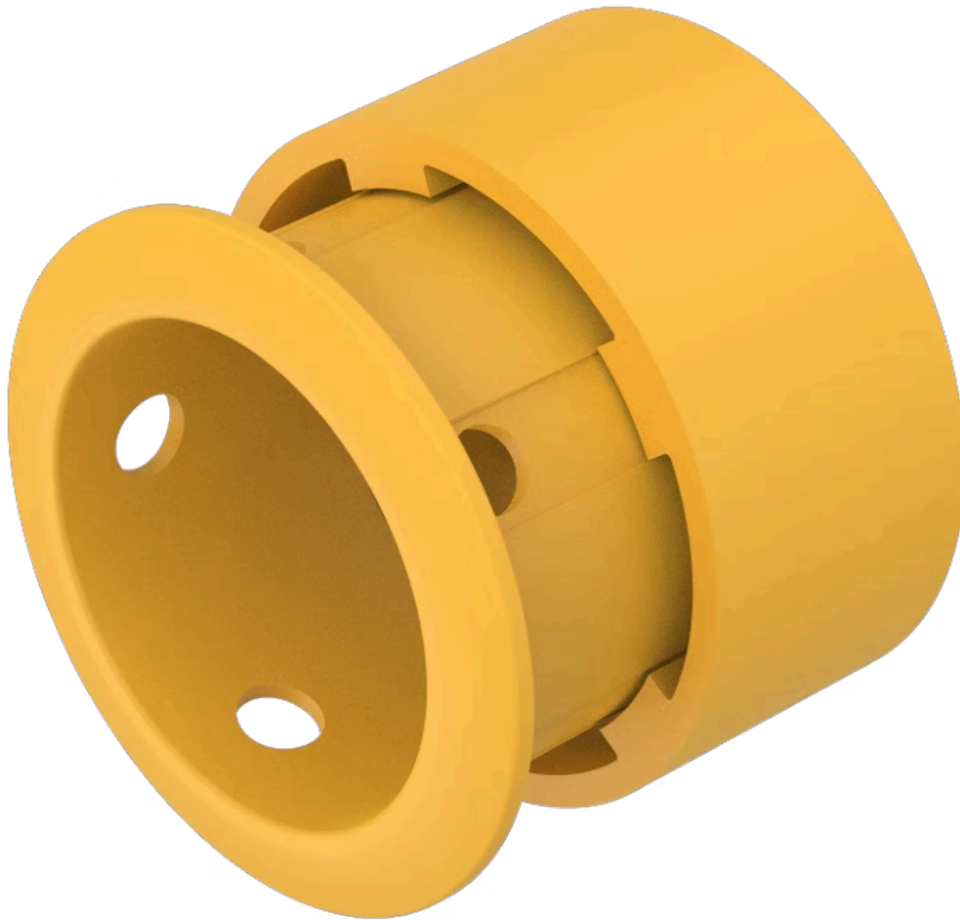


# E-stop protective shroud

45-539.2400

Distribution by  
Mouser



<https://mouser.eao.com/p/45-539.2400>

Your product:



## 45-539.2400

### E-stop protective shroud

#### FRONT

**Colour:** Yellow

#### MECHANICAL CHARACTERISTICS

**Weight:** 0.162 kg

#### OTHER

**Short Description:** E-stop protective shroud, Metal, Yellow

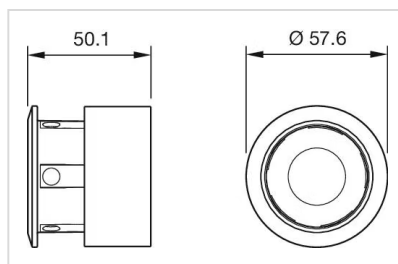
**Titel Accessory:** E-stop protective shroud

**Material:** Metal

**Product attributes:** For Emergency stop switch Ø 40 mm, for 5 padlocks

**Hints:** The protection shroud is not suitable for a proper use of emergency stop. It can obstruct a spontaneous operation of the emergency stop

**Dimension drawings:**



for Part No. 45-539.2400, 45-539.2800