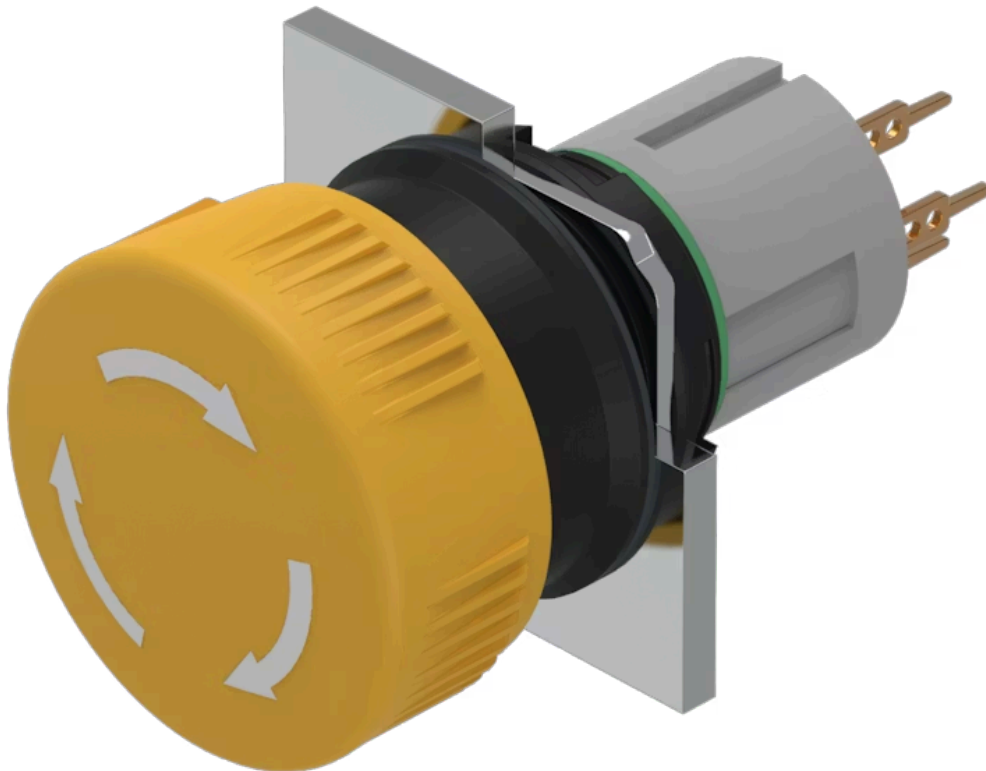


# Actuator

51-  
252.0264

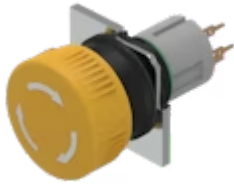
Distribution by  
Mouser



<https://mouser.eao.com/component/51-252.0264/...>

Your product:

---



## 51-252.0264 Actuator

### FRONT

|                         |           |
|-------------------------|-----------|
| <b>Front dimension:</b> | Ø 24,5 mm |
| <b>Front form:</b>      | Round     |

### MOUNTING

|                       |                |
|-----------------------|----------------|
| <b>Design:</b>        | Raised         |
| <b>Mounting type:</b> | Panel mounting |

### OPERATING-/INDICATION PART

|                           |                 |
|---------------------------|-----------------|
| <b>Lens colour:</b>       | Yellow          |
| <b>Lens material:</b>     | Plastic         |
| <b>Lens illumination:</b> | Non illuminated |
| <b>Lens shape:</b>        | Mushroom-head   |
| <b>Lens optics:</b>       | opaque          |

### ELECTRICAL CHARACTERISTICS

|   |                      |
|---|----------------------|
| <b>Switching voltage and switching current:</b> | 100 mA at 42 VAC/VDC |
| <b>Contacts:</b>                                | 2 NC                 |
| <b>Switching rating:</b>                        | 42 V AC @ 0,1 A      |

### MECHANICAL CHARACTERISTICS

|                          |                                |
|--------------------------|--------------------------------|
| <b>Terminal:</b>         | Universal terminal, 2 x 0.5 mm |
| <b>Contact material:</b> | Gold                           |

|                             |  |
|-----------------------------|--|
| <b>Switching action:</b>    | Maintained   |
| <b>Switching system:</b>    | Low-level element  |
| <b>Switching system:</b>    | <p>This low-level switching element was designed for switching low powers in electronic circuits. The mechanism assures reliable switching of loads ranging from a few <math>\mu\text{A}/\mu\text{V}</math> up to 100 mA/ 42 VAC/DC.</p> <p>Single-break momentary contact, as normally open or normally closed with 4 independent points of contact. 2 momentary contacts per switching element; combination of normally open and normally closed is possible.</p> <p>Special features are the long life, extremely short rebound time and stable contact resistance.</p> |
| <b>Release type:</b>        | Twist to unlock  |
| <b>Mechanical lifetime:</b> | 1 Mil. cycles of operation (RCC/RPB)   |
| <b>Operating force:</b>     | 18 ... 21 N (depending on the switching element)   |
| <b>Operating Travel:</b>    | 3 mm   |
| <b>Tightening torque:</b>   | Fixing nut max. 0.5 Nm   |
| <b>Terminal details 1:</b>  | <p>The universal terminals permit these units to be mounted on printed circuit boards (PCB). These terminals can also be used as soldering or plug-in terminals.</p> <p>For these terminals we can also supply a plug-in base which, when soldered on to the board, enables the switch to be plugged in.</p>   |
| <b>Weight:</b>              | 0.015 kg   |

## AMBIENT CONDITION

|                               |                                 |
|-------------------------------|---------------------------------|
| <b>IP front protection:</b>   | IP65, according to DIN EN 60529 |
| <b>Operating temperature:</b> | - 25 °C ... + 55 °C             |
| <b>Storage temperature:</b>   | - 40 °C ... + 85 °C             |

## CERTIFICATE

|               |                 |
|---------------|-----------------|
| <b>REACH:</b> | REACH compliant |
| <b>RoHS:</b>  | RoHS compliant  |

## OTHER

|                           |   |
|---------------------------|---|
| <b>Short Description:</b> | Actuator, $\varnothing$ 24,5 mm, Mushroom-head, Non illuminated, Yellow, Plastic, opaque, Round, 2 NC, Maintained, Universal terminal, 2 x 0.5 mm, IP65, according to DIN EN 60529, Twist to unlock |
| <b>Housing colour:</b>    | Black   |
| <b>Hints:</b>             | Marking arrows  |
| <b>Wiring diagrams:</b>   |   |



**Mounting cut-outs:**



**Dimension drawings:**



- A = Solder terminal
- B = Plug-in terminal 2.8 mm x 0.5 mm
- C = Universal terminal 2.0 mm x 0.5 mm