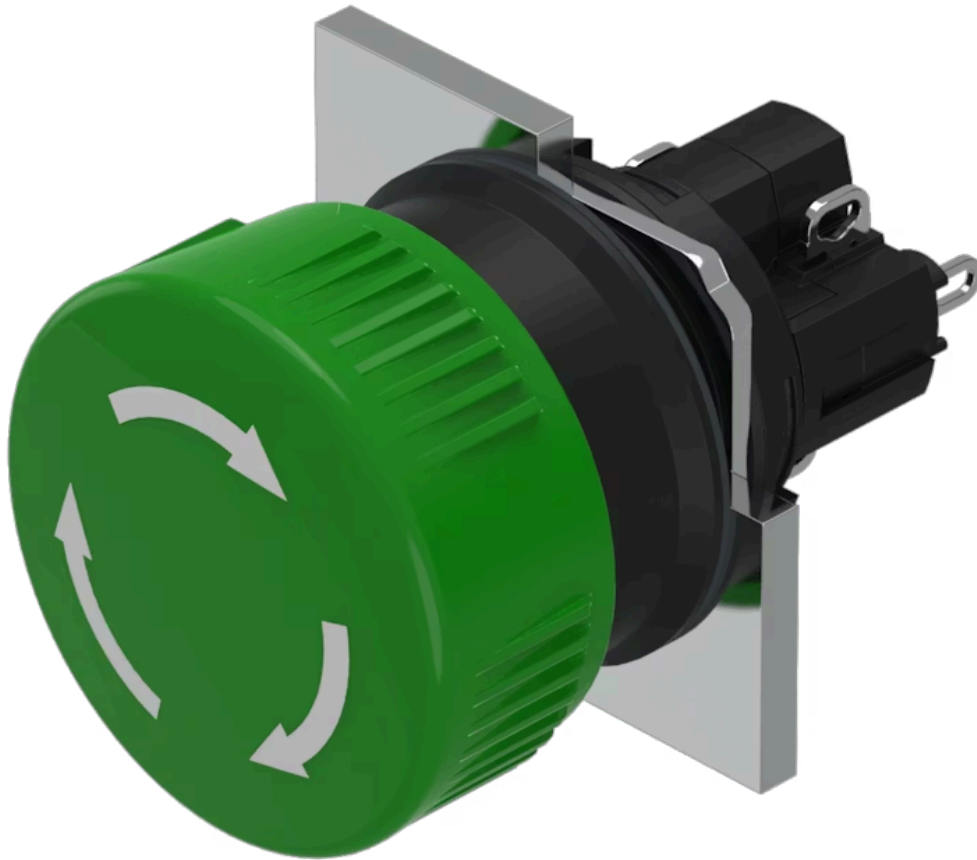


Actuator

51-
256.0255

Distribution by
Mouser



<https://mouser.eao.com/component/51-256.0255/...>

Your product:



51-256.0255 Actuator

FRONT

Front dimension: Ø 24,5 mm

Front form: Round

MOUNTING

Design: Raised

Mounting type: Panel mounting

OPERATING-/INDICATION PART

Lens colour: Green

Lens material: Plastic

Lens illumination: Non illuminated

Lens shape: Mushroom-head

Lens optics: opaque

ELECTRICAL CHARACTERISTICS

Switching voltage and switching current: 250 VAC, 5 A (ohmic)
24 VDC, 2 A (inductive, L:R = 30 ms)

Contacts: 1 NC / 1 NO

Switching rating: 250 V @ 5 A

MECHANICAL CHARACTERISTICS

Terminal: Soldering terminal

Contact material: Gold

| | |
|-----------------------------|----------------------------------------------------------------------------------------------------------------------|
| Switching action: | Maintained |
| Switching system: | Snap-action switching element |
| Switching system: | Self-cleaning, double-break snap action switching system, 1 normally closed and 1 normally open contact per element. |
| Release type: | Twist to unlock |
| Mechanical lifetime: | 100 000 cycles of operation |
| Operating force: | 18 ... 21 N (depending on the switching element) |
| Tightening torque: | Fixing nut max. 0.5 Nm |
| Weight: | 0.014 kg |

AMBIENT CONDITION

| | |
|-------------------------------|---------------------------------|
| IP front protection: | IP65, according to DIN EN 60529 |
| Operating temperature: | - 25 °C ... + 55 °C |
| Storage temperature: | - 40 °C ... + 85 °C |

CERTIFICATE

| | |
|----------------------|------------------------------------------------------|
| Approbations: | CB (IEC 61058-1), CSA, ENEC (EN 61058-1), UL |
| Conformities: | CE, UKCA, 2006 / 42 / EC (MD), 2011 / 65 / EC (RoHS) |
| REACH: | REACH compliant |
| RoHS: | RoHS compliant |

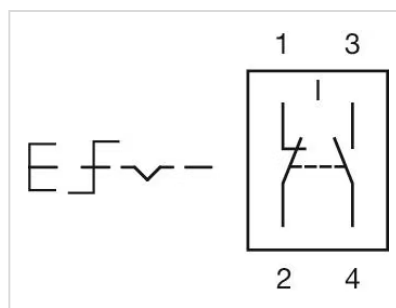
OTHER

Short Description: Actuator, Ø 24,5 mm, Mushroom-head, Non illuminated, Green, Plastic, opaque, Round, 1 NC / 1 NO, Maintained, Soldering terminal, IP65, according to DIN EN 60529, Twist to unlock

Housing colour: Black

Hints: Marking arrows

Wiring diagrams:



Mounting cut-outs:



Dimension drawings:



- A = Solder terminal
- B = Plug-in terminal $2.8\text{ mm} \times 0.5\text{ mm}$
- C = Universal terminal $2.0\text{ mm} \times 0.5\text{ mm}$