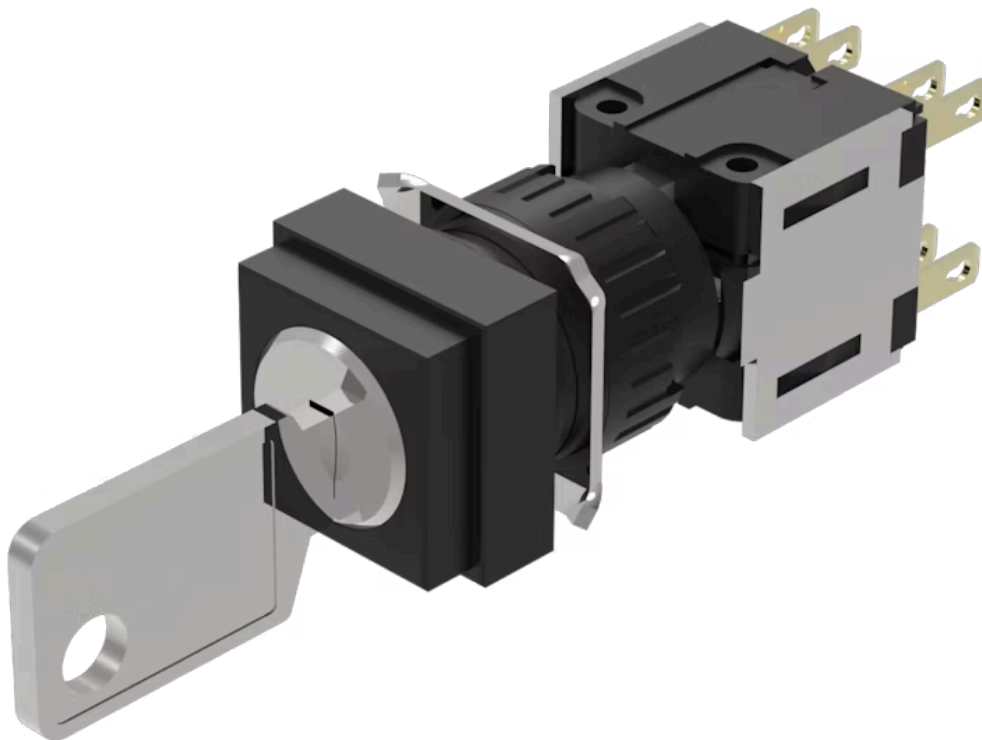


# Actuator

51-  
381.F22D

Distribution by  
Mouser



<https://mouser.eao.com/p/51-381.F22D>

Your product:

---



## 51-381.F22D Actuator

### FRONT

**Front dimension:** 18 mm x 18 mm

**Front form:** Square

### MOUNTING

**Design:** Raised

**Mounting type:** Panel mounting

### ELECTRICAL CHARACTERISTICS

**Switching voltage and switching current:** 250 VAC, 5 A ( $\cos\phi$  0.75)

**Contacts:** 2 NC / 2 NO

**Switching rating:** 250 V @ 5 A

**Electric strength:** 2500 VAC, 50 Hz, 1 min. between all terminals and earth, according to IEC 61058-1, part 15

**Electrostatic discharge (ESD):**  $\leq 15$  KV

**Protection class:** II

**Thermal current I<sub>th</sub>:** 5 A, according to EN / IEC 60947-5-1

### MECHANICAL CHARACTERISTIC

**Terminal:** Plug-in terminal, 2.8 x 0.5 mm

**Contact material:** Gold

**Switching action:** Maintained - Rest (a) - Maintained

**Switching system:** Snap-action switching element

**Switching system:**

Self-cleaning, double-break snap action switching system, 2 normally closed and 2 normally open contact per element.

|                             |   |
|-----------------------------|---|
| <b>Switching positions:</b> | 3 positions   |
| <b>Switching angle:</b>     | 90° left / 90° right  |
| <b>Mechanical lifetime:</b> | 50 000 cycles of operation  |
| <b>Tightening torque:</b>   | Fixing nut max. 0.5 Nm  |
| <b>Wire cross section:</b>  | Max. wire cross-section 2 wires with 1 mm<br>Max. wire cross-section of stranded cable 2 x 0.75 mm <sup>2</sup> |
| <b>Weight:</b>              | 0.016 kg  |

#### **AMBIENT CONDITION**

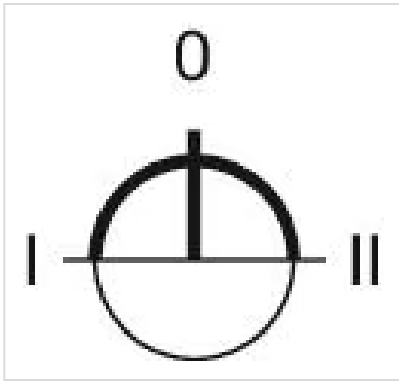
|                               |                                 |
|-------------------------------|---------------------------------|
| <b>IP front protection:</b>   | IP65, according to DIN EN 60529 |
| <b>Operating temperature:</b> | – 25 °C ... + 55 °C             |
| <b>Storage temperature:</b>   | – 40 °C ... + 85 °C             |

#### **CERTIFICATE**

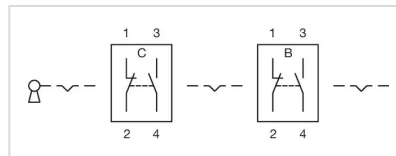
|                      |   |
|----------------------|---|
| <b>Approbations:</b> | CB (IEC 61058-1), CQC, CSA, DNV, ENEC (EN 61058-1), UL                      |
| <b>Conformities:</b> | CE, UKCA, 2011 / 65 / EC (RoHS), 2014 / 30 / EU (EMC), 2014 / 35 / EU (LVD) |
| <b>REACH:</b>        | REACH compliant   |
| <b>RoHS:</b>         | RoHS compliant  |

#### **OTHER**

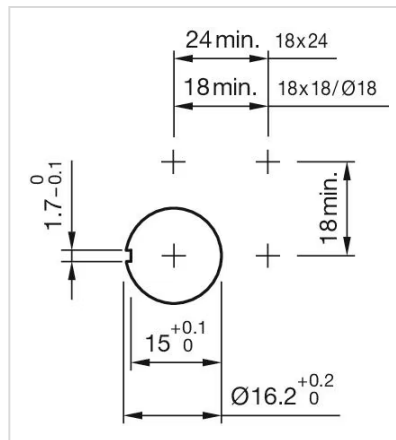
|   |   |
|---|---|
| <b>Short Description:</b>                 | Actuator, 18 mm x 18 mm, Square, 2 NC / 2 NO, Maintained - Rest (a) - Maintained, Plug-in terminal, 2.8 x 0.5 mm, IP65, according to DIN EN 60529 |
| <b>Housing colour:</b>                    | Black   |
| <b>Hints:</b>                             | Standard lock: DOM 311  |
| <b>max. number of switching elements:</b> | 1   |
| <b>Switching positions:</b>               |   |



**Wiring diagrams:**



**Mounting cut-outs:**



**Dimension drawings:**

