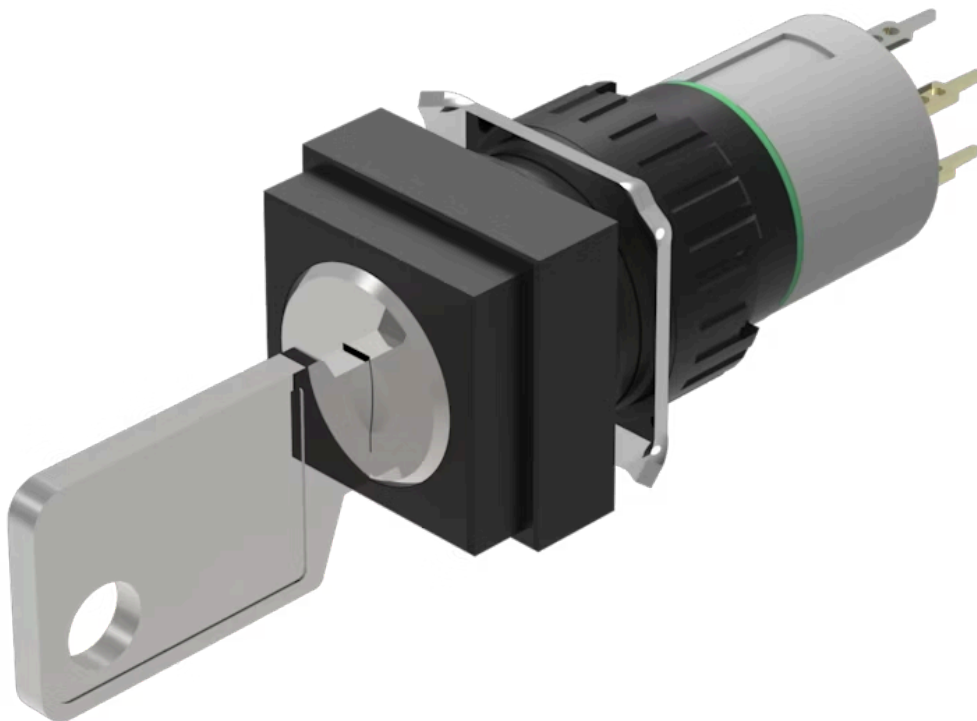


Actuator

51-
442.036D

Distribution by
Mouser



<https://mouser.eao.com/component/51-442.036D/...>

Your product:



51-442.036D Actuator

FRONT

| | |
|-------------------------|---------------|
| Front dimension: | 18 mm x 18 mm |
| Front form: | Square |

MOUNTING

| | |
|-----------------------|----------------|
| Design: | Raised |
| Mounting type: | Panel mounting |

ELECTRICAL CHARACTERISTICS

| | |
|---|--|
| Switching voltage and switching current: | 100 mA at 42 VAC/VDC |
| Contacts: | 1 NC / 1 NO |
| Switching rating: | 42 V @ 0,1 A |
| Electric strength: | 2500 VAC, 50 Hz, 1 min. between all terminals and earth, according to IEC 61058-1, part 15 |
| Electrostatic discharge (ESD): | ≤ 15 KV |

MECHANICAL CHARACTERISTICS

| | |
|--------------------------|---|
| Terminal: | Universal terminal, 2 x 0.5 mm |
| Contact material: | Gold |
| Switching action: | Rest (a) - Maintained (a) |
| Switching system: | Low-level element |
| Switching system: | This low-level switching element was designed for switching low powers in electronic circuits. The mechanism assures reliable switching of loads ranging from a few $\mu\text{A}/\mu\text{V}$ up to 100 mA/ 42 VAC/DC. Single-break momentary contact, as normally open or normally closed with 4 independent points of contact. 2 momentary contacts per switching element; |

combination of normally open and normally closed is possible.
Special features are the long life, extremely short rebound time and stable contact resistance.

| | |
|-----------------------------|--|
| Switching positions: | 2 positions |
| Switching angle: | 90° right |
| Mechanical lifetime: | 50 000 cycles of operation |
| Operating force: | 1,8 ... 3,5 N |
| Tightening torque: | Fixing nut max. 0.5 Nm |
| Terminal details 1: | The universal terminals permit these units to be mounted on printed circuit boards (PCB). These terminals can also be used as soldering or plug-in terminals. For these terminals we can also supply a plug-in base which, when soldered on to the board, enables the switch to be plugged in. |
| Weight: | 0.018 kg |

AMBIENT CONDITION

| | |
|-------------------------------|--|
| IP front protection: | IP65, according to DIN EN 60529 |
| Operating temperature: | - 25 °C ... + 55 °C |
| Storage temperature: | - 40 °C ... + 85 °C |
| Shock resistance: | 15 g for 11 ms, as per DIN / EN 60512-4-3, DIN / EN 60068-2-27 (Single impacts, semi-sinusoidal) |

CERTIFICATE

| | |
|----------------------|--|
| Approbations: | CB (IEC 61058-1), CQC, CSA, DNV, ENEC (EN 61058-1), UL |
| REACH: | REACH compliant |
| RoHS: | RoHS compliant |

OTHER

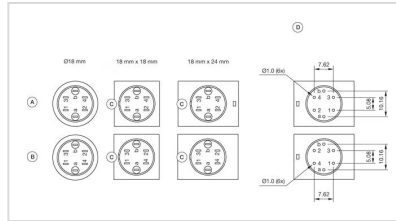
| | |
|-----------------------------|--|
| Short Description: | Actuator, 18 mm x 18 mm, Square, 1 NC / 1 NO, Rest (a) - Maintained (a), Universal terminal, 2 x 0.5 mm, IP65, according to DIN EN 60529 |
| Housing colour: | Black |
| Hints: | Standard lock: DOM 311 |
| Switching positions: | |



Wiring diagrams:

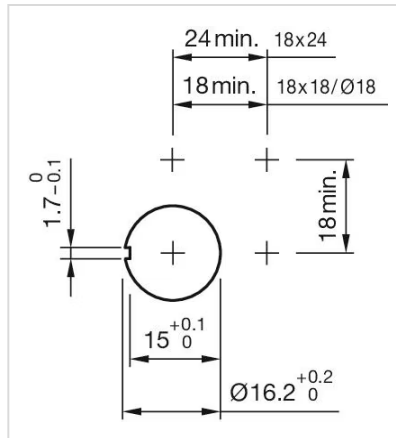


Component layouts:



- A = Universal terminal (rear side)
- B = Plug-in terminal (rear side)
- C = Anti twist device
- D = Drilling plan

Mounting cut-outs:



Dimension drawings:



- A = Solder terminal
- B = Plug-in terminal 2.8 mm x 0.5 mm
- C = Universal terminal 2.0 mm x 0.5 mm