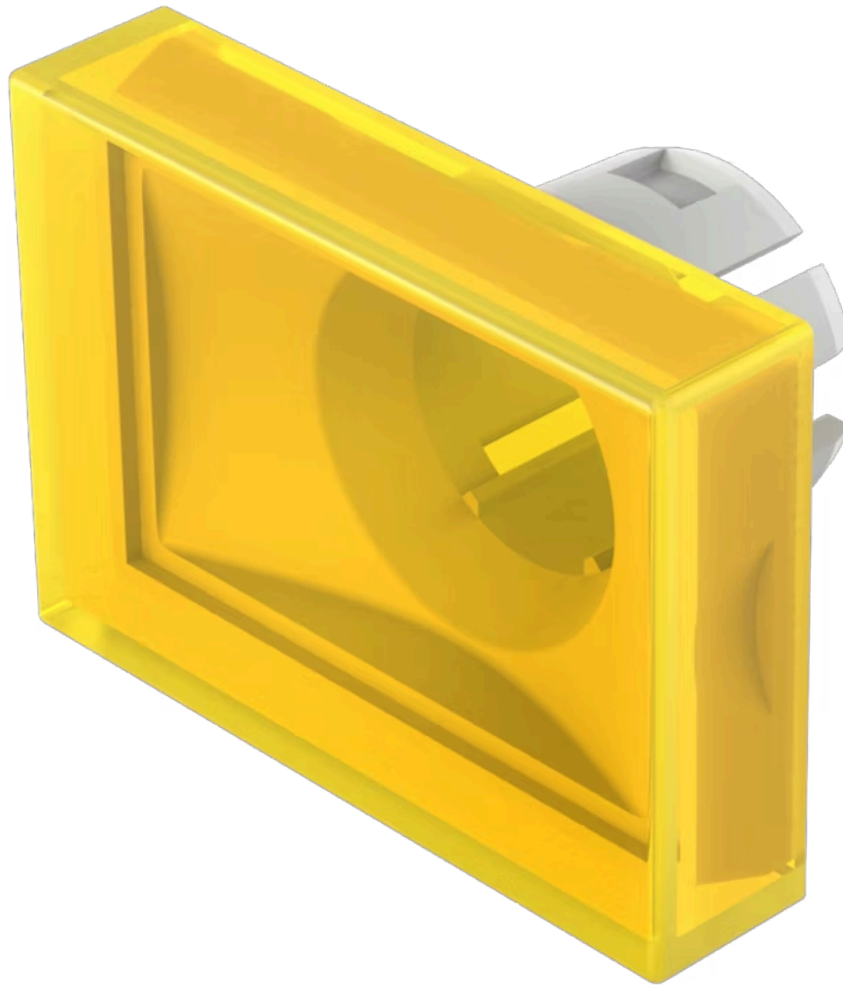


# Lens

51-  
901.4

Distribution by  
Mouser



<https://mouser.eao.com/component/51-901.4/en/...>

Your product:

---



## 51-901.4 Lens

*Loading ...*

### FRONT

**Front form:** Rectangular

### OPERATING-/INDICATION PART

**Lens colour:** Yellow

**Lens material:** Plastic

**Lens illumination:** Illuminated

**Lens shape:** Flush

**Lens optics:** translucent

### MECHANICAL CHARACTERISTICS

**Weight:** 0.002 kg

### CERTIFICATE

**REACH:** REACH compliant

**RoHS:** RoHS compliant

### OTHER

**Short Description:** Lens, 21.5 mm x 15.3 mm, Illuminated, Yellow, Flush, Plastic

**Dimension:** 21.5 mm x 15.3 mm

**Product attributes:** Not recommended for film insert