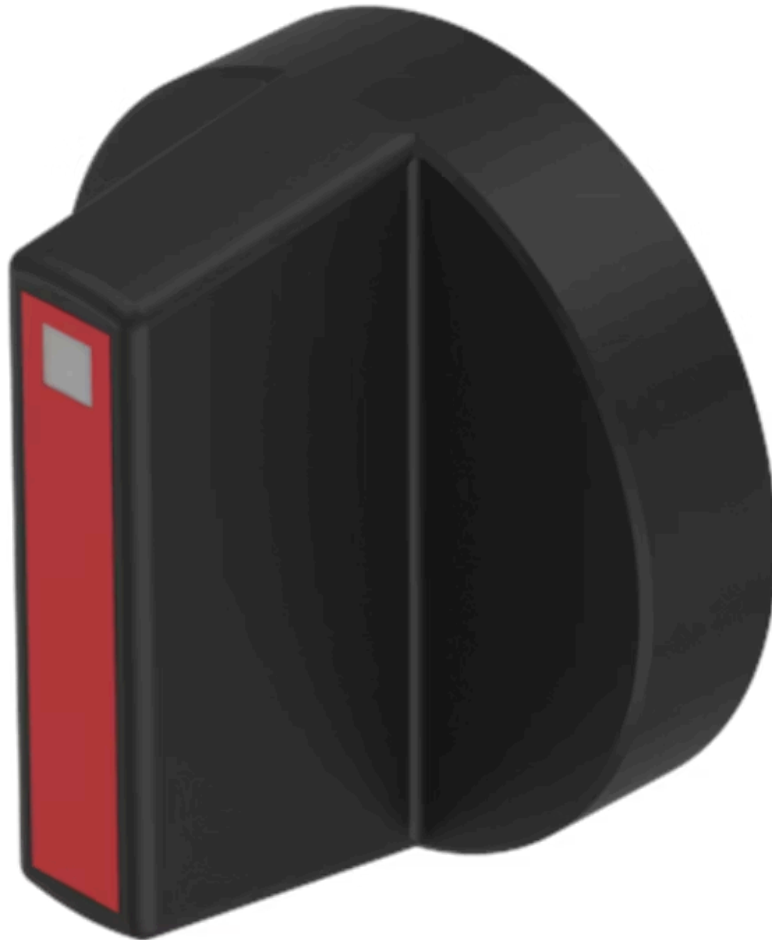


Lever

52-
928.20

Distribution by
Mouser



<https://mouser.eao.com/component/52-928.20/en...>

Your product:



52-928.20 Lever

Loading ...

OPERATING-/INDICATION PART

| | |
|--------------------------|---------|
| Lever colour: | Black |
| Lever bar colour: | Red |
| Lever material: | plastic |
| Lever shape: | short |

MECHANICAL CHARACTERISTICS

| | |
|----------------|----------|
| Weight: | 0.001 kg |
|----------------|----------|

CERTIFICATE

| | |
|---------------|-----------------|
| REACH: | REACH compliant |
| RoHS: | RoHS compliant |

OTHER

| | |
|----------------------------|---|
| Short Description: | Lever, illuminative, Red, Black, short, plastic |
| Product attributes: | With bar and marking dot |
| Hints: | With bar and marking dot |