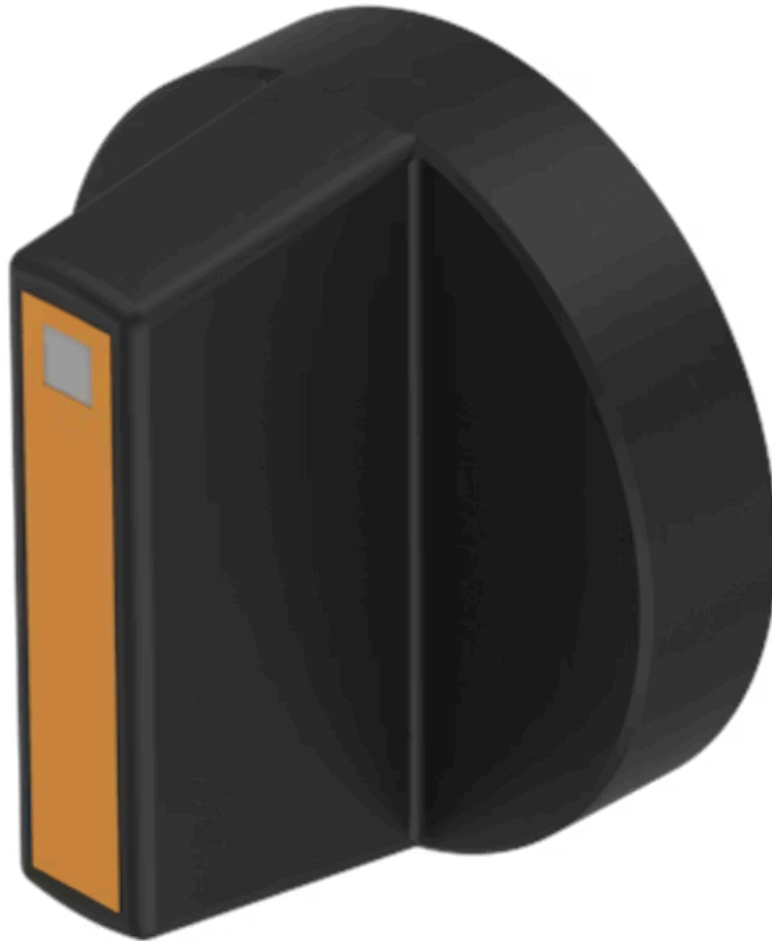


Lever

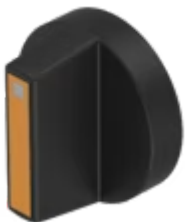
52-
928.30

Distribution by
Mouser



<https://mouser.eao.com/component/52-928.30/en...>

Your product:



52-928.30
Lever

Loading ...

OPERATING-/INDICATION PART

Lever colour:	Black
Lever bar colour:	Orange
Lever material:	plastic
Lever shape:	short

MECHANICAL CHARACTERISTICS

Weight:	0.001 kg
----------------	----------

CERTIFICATE

REACH:	REACH compliant
RoHS:	RoHS compliant

OTHER

Short Description:	Lever, illuminative, Orange, Black, short, plastic
Product attributes:	With bar and marking dot
Hints:	With bar and marking dot