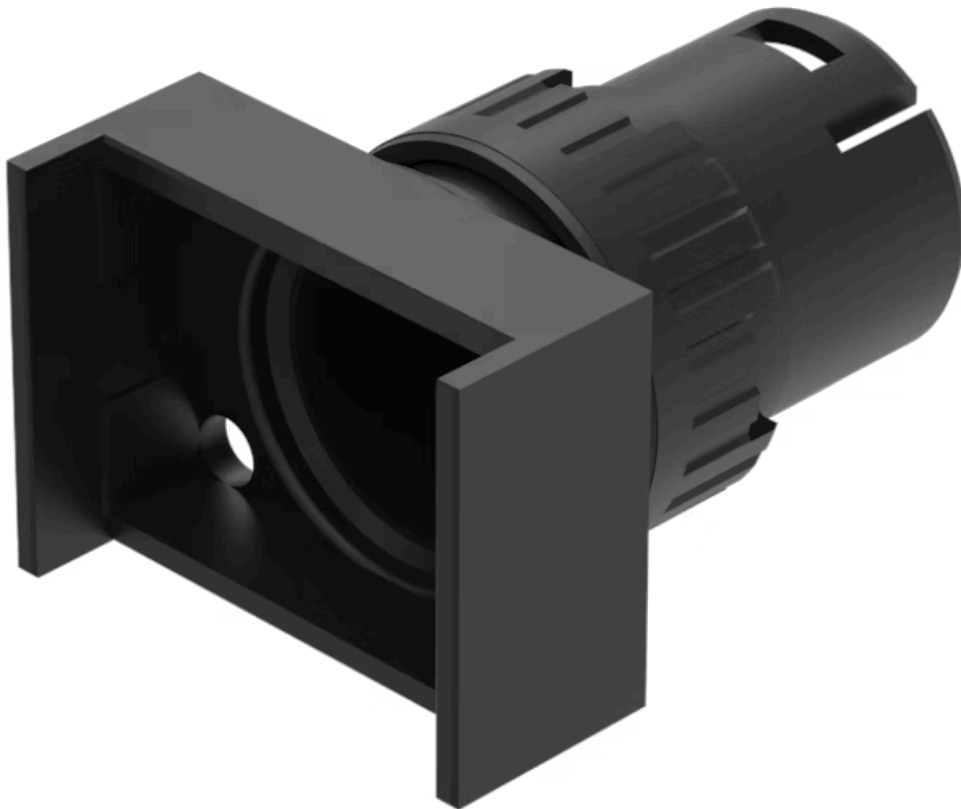


Actuator

61-0039.0

Distribution by
Mouser



<https://mouser.eao.com/p/61-0039.0>

Your product:



61-0039.0 Actuator

FRONT

Front dimension:	24 mm
Front form:	Rectangular
Front bezel colour:	Black
Front bezel material:	Plastic

MOUNTING

Mounting cut-out:	Ø 16 mm
Mounting type:	Panel mounting

ELECTRICAL CHARACTERISTICS

Switching rating:

MECHANICAL CHARACTERISTIC

Tightening torque:	Max. 0.5 Nm
Weight:	0.005 kg

AMBIENT CONDITION

IP Protection:	IP40 rear side, according to EN IEC 60529, IP67 front side, according to EN IEC 60529
Operating temperature:	– 25 °C ... + 55 °C
Storage temperature:	– 40 °C ... + 85 °C

CERTIFICATE

REACH: REACH compliant

RoHS: RoHS compliant

OTHER

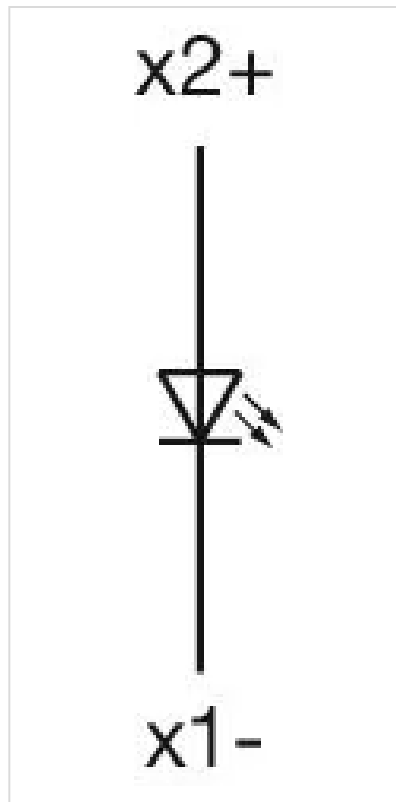
Short Description: Actuator, Ø 16 mm, 24 mm, Rectangular, Black, Plastic

Internal size: 21,5 mm x 15,3 mm

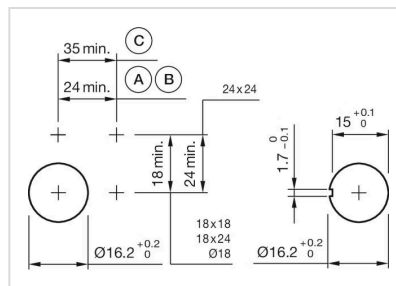
Housing colour: Black

Housing material:	Plastic, according to UL 94 V0, self-extinguishing
--------------------------	--

Wiring diagrams:



Mounting cut-outs:

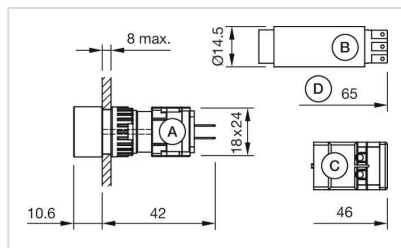


A = Solder/Plug-in terminal 2.8 mm x 0.5 mm

B = Solder terminal

C = Screw terminal

Dimension drawings:



- A = Plug-in terminal 2.8 mm x 0.5 mm
- B = Solder terminal
- C = Screw terminal
- D = Flasher
- E = Slow-make switching element
- F = Snap-action switching element