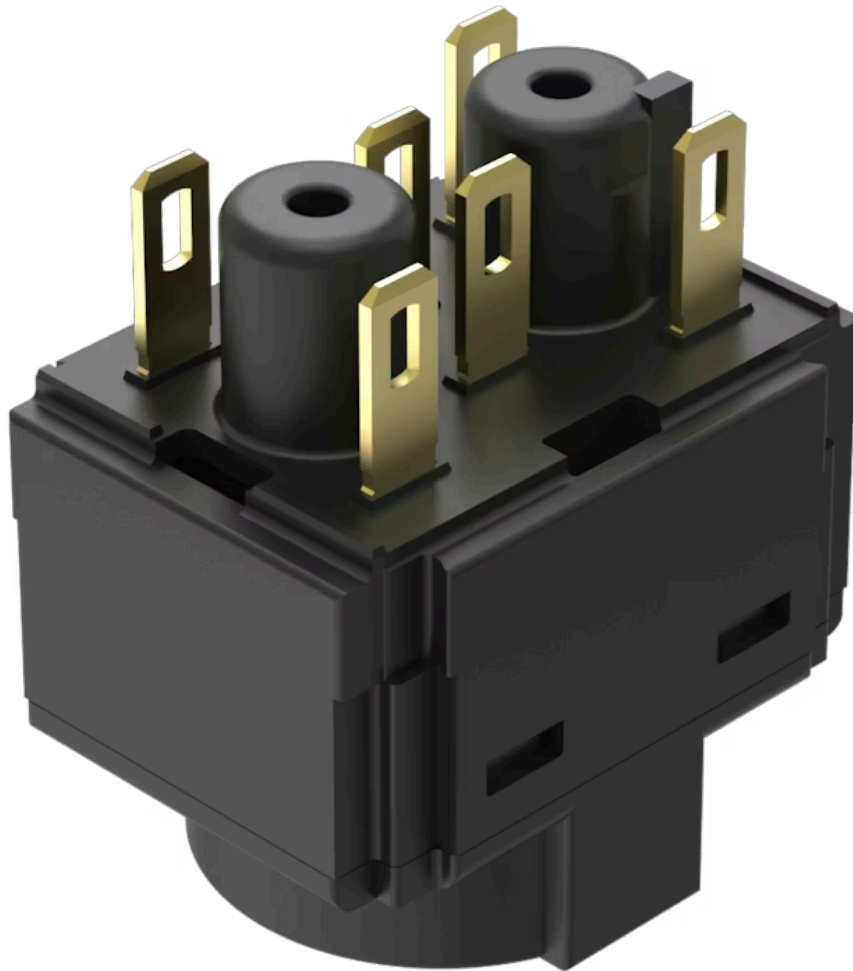


Switching element

61-8620.37

Distribution by
Mouser



<https://mouser.eao.com/component/61-8620.37/e...>

Your product:



61-8620.37 Switching element

Loading ...

ELECTRICAL CHARACTERISTICS

Switching voltage and switching current:

Switch rating AC with gold contact
Service category AC-15
according to EN IEC 60947-5-1
Voltage 50 VAC
Current 0.5 A
Switch rating DC with gold contact
Service category DC-13
according to EN IEC 60947-5-1
Voltage 50 VDC
Current 0.1 A

Contacts:

2 NO

Rated Operational Voltage U_e:

50 VAC / DC, according to EN / IEC 60947-5-1

Rated impulse withstand voltage U_{imp}:

0.8 kV, according to EN / IEC 60947-5-1

Rated insulation voltage U_i:

320 VAC, according to EN / IEC 60947-5-1

Recommended minimum operational data:

Voltage 10 VAC/DC
Current 2 mA

Switching rating:

50 V AC/DC @ 0,3 A

Electric strength:

4000 VAC, 50 Hz, 1 minute, as per DIN / IEC 60512-2 between all terminals and earth

Overvoltage category:

III, according to EN / IEC 60947-5-1

Pollution degree:

2, according to EN IEC 60947-1

Protection class:

II, according to EN / IEC 61058-1

Standards:

The switches comply with the "Standards for low-voltage switching devices" EN IEC 61058-1, EN IEC 60947-5-1

Thermal current I_{th}:

3 A

MECHANICAL CHARACTERISTICS

Terminal:

Plug-in terminal, 2.8 x 0.5 mm

Contact material:

Gold

Switching system:	Slow-make switching element
Switching system:	Double-break slow-make system, contact opening width 2 x 1.5 mm, with 2 x 2 contact points per switching element. NC-contact elements in the slow-make elements fulfill requirements of switches with forced opening as per EN / IEC 60947-5-12.17.
Switching positions:	2 positions
Wire cross section:	1 wire flexible: 0.5 ... 0.75 mm ² 1 wire super flexible: 0.5 mm ² 1 wire rigid: 0.5 ... 1.5 mm ² 2 wires flexible: 0.5 ... 0.75 mm ² 2 wires super flexible: 0.5 mm ² 2 wires rigid: 0.5 ... 1.5 mm ²
Weight:	0.008 kg

AMBIENT CONDITION

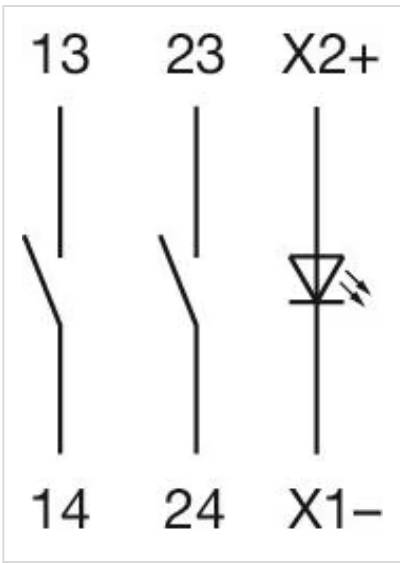
IP Protection:	IP40
Operating temperature:	- 25 °C ... + 55 °C
Storage temperature:	- 40 °C ... + 85 °C
Shock resistance:	Max. 100 m / s ² , pulse width, 3-axis (sinusoidal EN IEC 60068-2-27)
Vibration resistance:	Max. 100 m / s ² from 10 Hz ... 500 Hz, (sinusoidal EN IEC 60068-2-6)
Climate resistance:	Damp heat, cyclic: 96 hours, + 25 °C/97 %, + 55 °C/93 % relative humidity, as per EN IEC 60068-2-30 Damp heat, steady: 56 days, + 40 °C/93 % relative humidity, according to EN IEC 60068-2-78 Rapid change of temperature: 100 cycles, - 40 °C ... + 80 °C, as per EN / IEC 60068-2-14

CERTIFICATE

Approbations:	CB (IEC 61058-1), CQC, CSA, DNV, ENEC (EN 61058-1), UL, VDE
Conformities:	CE, UKCA, 2011 / 65 / EC (RoHS), 2014 / 35 / EU (LVD)
REACH:	REACH compliant
RoHS:	RoHS compliant

OTHER

Short Description:	Switching element, Slow-make switching element, 50 V AC/DC @ 0,3 A, Gold, 2 NO, Plug-in terminal, 2.8 x 0.5 mm
Material:	Plastic, according to UL 94 V0
Hints:	With lamp terminal
Wiring diagrams:	



Component layouts:

