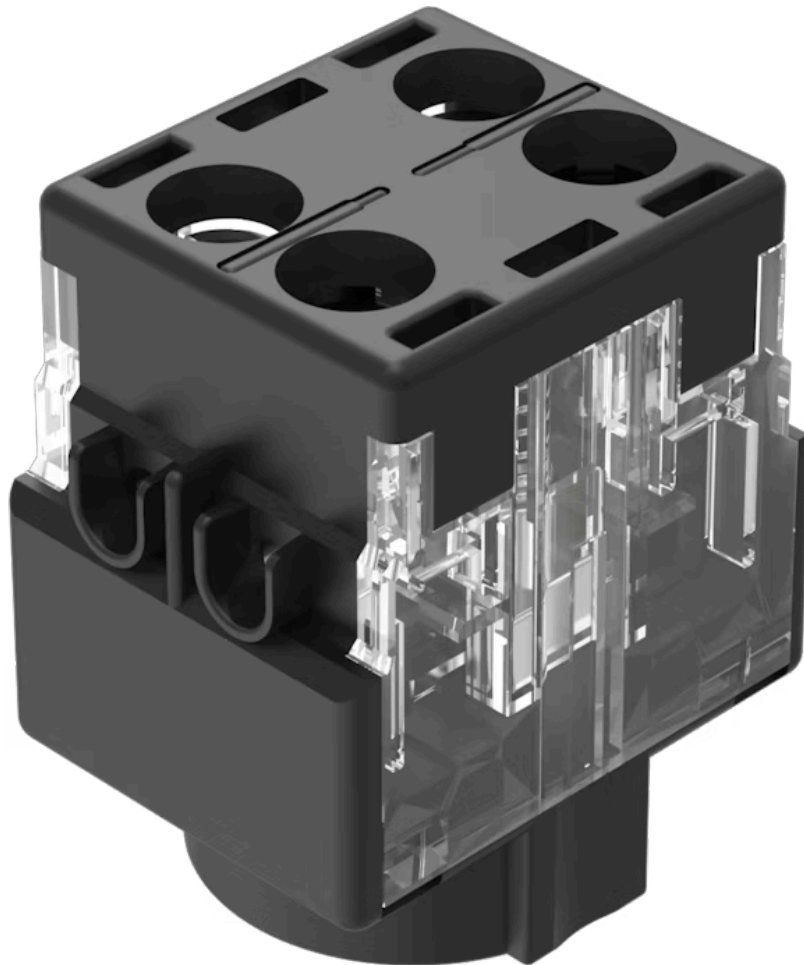


# Switching element

61-8675.11

Distribution by  
Mouser



<https://mouser.eao.com/component/61-8675.11/e...>

Your product:



## 61-8675.11 Switching element

*Loading ...*

### ELECTRICAL CHARACTERISTICS

#### Switching voltage and switching current:

Switch rating AC with silver contact		
Service category AC-15		
according to EN IEC 60947-5-1		
Voltage	125 VAC	250 VAC
Current	3 A	2 A
Switch rating DC with silver contact		
Service category DC-13		
according to EN IEC 60947-5-1		
Voltage	250 VDC	
Current	0.2 A	

#### Contacts:

1 NC / 1 NO

#### Contact resistance:

New state  $\leq 50 \text{ m}\Omega$ , as per DIN/IEC 60512-2-4, measured at 100 mA, 10 V

#### Rated Operational Voltage $U_e$ :

250 VAC/DC according to EN IEC 60947-1

#### Rated impulse withstand voltage $U_{imp}$ :

4 kV, according to EN/IEC 60947-5-1

#### Rated insulation voltage $U_i$ :

320 VAC, according to EN / IEC 60947-5-1

#### Recommended minimum operational data:

Voltage	20 VAC/DC
Current	100 mA

#### Switching rating:

250 V AC/DC @ 5 A

#### Electrical lifetime:

$\geq 50\,000$  cycles of operation at 250VAC, 2A,  $\cos\phi 0.95$ ,

#### Electric strength:

4000 VAC, 50 Hz, 1 minute, as per DIN / IEC 60512-2 between all terminals and earth

#### Overvoltage category:

III, according to EN / IEC 60947-5-1

#### Pollution degree:

2, according to EN IEC 60947-1

#### Protection class:

II, according to EN / IEC 61058-1

#### Standards:

The switches comply with the "Standards for low-voltage switching devices" EN IEC 61058-1, EN IEC 60947-5-1

#### Thermal current $I_{th}$ :

5 A, according to EN / IEC 60947-5-1

### MECHANICAL CHARACTERISTICS

<b>Terminal:</b>	Screw terminal
<b>Contact material:</b>	Silver
<b>Switching system:</b>	Slow-make switching element
<b>Switching system:</b>	Double-break slow-make system, contact opening width 2 x 1.5 mm, with 2 x 2 contact points per switching element. NC-contact elements in the slow-make elements fulfill requirements of switches with forced opening as per EN / IEC 60947-5-12.17.
<b>Switching positions:</b>	2 positions
<b>Wire cross section:</b>	1 wire flexible: 0.5 ... 0.75 mm <sup>2</sup> 1 wire super flexible: 0.5 mm <sup>2</sup> 1 wire rigid: 0.5 ... 1.5 mm <sup>2</sup> 2 wires super flexible: 0.5 mm <sup>2</sup> 2 wires flexible: 0.5 mm <sup>2</sup> 2 wires rigid: 0.75 mm <sup>2</sup>
<b>Weight:</b>	0.016 kg

### AMBIENT CONDITION

<b>IP Protection:</b>	IP40
<b>Operating temperature:</b>	- 25 °C ... + 55 °C
<b>Storage temperature:</b>	- 40 °C ... + 85 °C
<b>Shock resistance:</b>	Max. 100 m / s <sup>2</sup> , pulse width, 3-axis (sinusoidal EN IEC 60068-2-27)
<b>Vibration resistance:</b>	Max. 100 m / s <sup>2</sup> from 10 Hz ... 500 Hz, (sinusoidal EN IEC 60068-2-6)
<b>Climate resistance:</b>	Damp heat, cyclic: 96 hours, + 25 °C/97 %, + 55 °C/93 % relative humidity, as per EN IEC 60068-2-30 Damp heat, steady: 56 days, + 40 °C/93 % relative humidity, according to EN IEC 60068-2-78 Rapid change of temperature: 100 cycles, - 40 °C ... + 80 °C, as per EN / IEC 60068-2-14

### CERTIFICATE

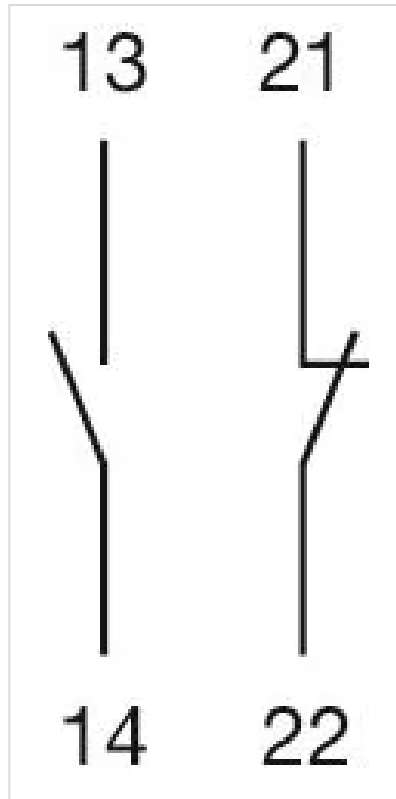
<b>Approbations:</b>	CB (IEC 61058-1), CQC, CSA, DNV, ENEC (EN 61058-1), UL, VDE
<b>Conformities:</b>	CE, UKCA, 2011 / 65 / EC (RoHS), 2014 / 35 / EU (LVD)
<b>REACH:</b>	REACH compliant
<b>RoHS:</b>	RoHS compliant

### OTHER

<b>Short Description:</b>	Switching element, Slow-make switching element, 250 V AC/DC @ 5 A, Silver, 1 NC / 1 NO, Screw terminal
<b>Material:</b>	Plastic, according to UL 94 V0
<b>Product attributes:</b>	

Without lamp terminal

**Wiring diagrams:**



**Component layouts:**

