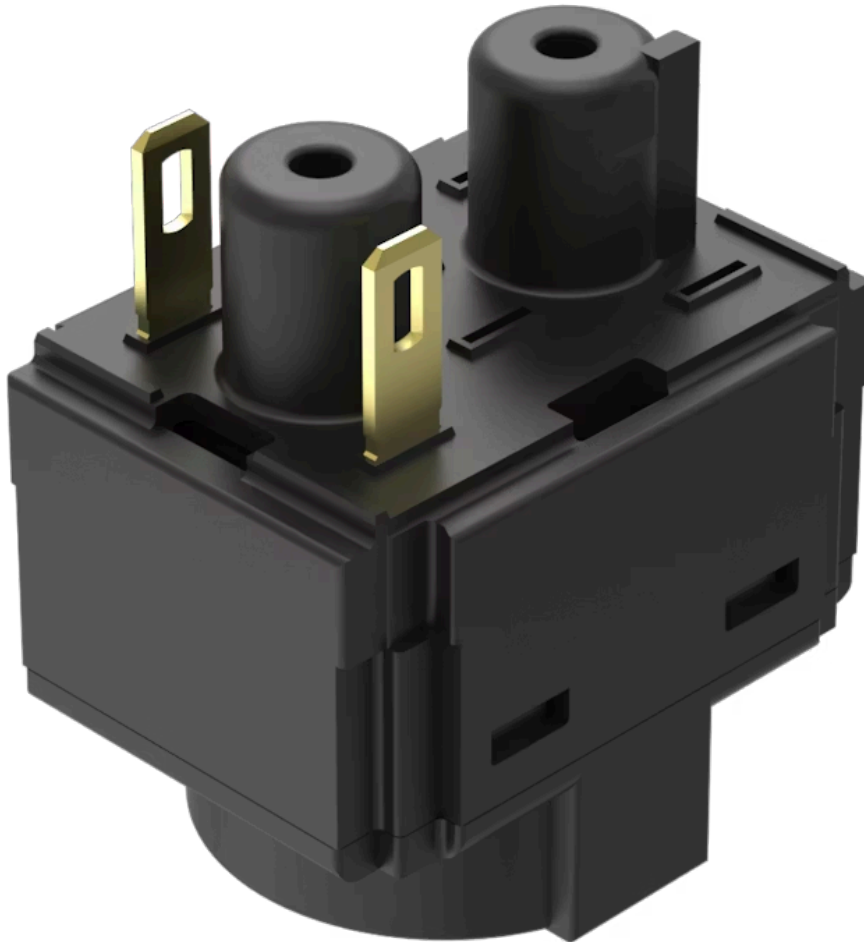


Switching element

61-8745.37

Distribution by
Mouser



<https://mouser.eao.com/component/61-8745.37/e...>

Your product:



61-8745.37 Switching element

Loading ...

ELECTRICAL CHARACTERISTICS

Switching voltage and switching current:

Switch rating AC with gold contact	
Service category AC-15	
according to EN IEC 60947-5-1	
Voltage	50 VAC
Current	0.5 A
Switch rating DC with gold contact	
Service category DC-13	
according to EN IEC 60947-5-1	
Voltage	50 VDC
Current	0.1 A

Contacts:

1 NC

Rated Operational Voltage U_e:

50 VAC / DC, according to EN / IEC 60947-5-1

Rated impulse withstand voltage U_{imp}:

0.8 kV, according to EN / IEC 60947-5-1

Rated insulation voltage U_i:

320 VAC, according to EN / IEC 60947-5-1

Recommended minimum operational data:

Voltage	10 VAC/DC
Current	2 mA

Switching rating:

50 V AC/DC @ 0,3 A

Pollution degree:

3, according to EN IEC 60947-1

Standards:

The switches comply with the "Standards for low-voltage switching devices" EN IEC 61058-1, EN IEC 60947-5-1

Thermal current I_{th}:

3 A

MECHANICAL CHARACTERISTICS

Terminal:

Plug-in terminal, 2.8 x 0.5 mm

Contact material:

Gold

Switching system:

Slow-make switching element

Switching positions:

2 positions

Wire cross section:

1 wire flexible: 0.5 ... 0.75 mm²
1 wire super flexible: 0.5 mm²

1 wire rigid: 0.5 ... 1.5 mm²
2 wires flexible: 0.5 ... 0.75 mm²
2 wires super flexible: 0.5 mm²
2 wires rigid: 0.5 ... 1.5 mm²

Weight: 0.007 kg

AMBIENT CONDITION

Operating temperature: – 25 °C ... + 55 °C

Climate resistance: Damp heat, cyclic: 96 hours, + 25 °C/97 %, + 55 °C/93 % relative humidity, as per EN IEC 60068-2-30
Damp heat, steady: 56 days, + 40 °C/93 % relative humidity, according to EN IEC 60068-2-78
Rapid change of temperature: 100 cycles, – 40 °C ... + 80 °C, as per EN / IEC 60068-2-14

CERTIFICATE

Approbations: CB (IEC 61058-1), CQC, CSA, DNV, ENEC (EN 61058-1), UL, VDE

Conformities: CE, UKCA, 2011 / 65 / EC (RoHS), 2014 / 35 / EU (LVD)

REACH: REACH compliant

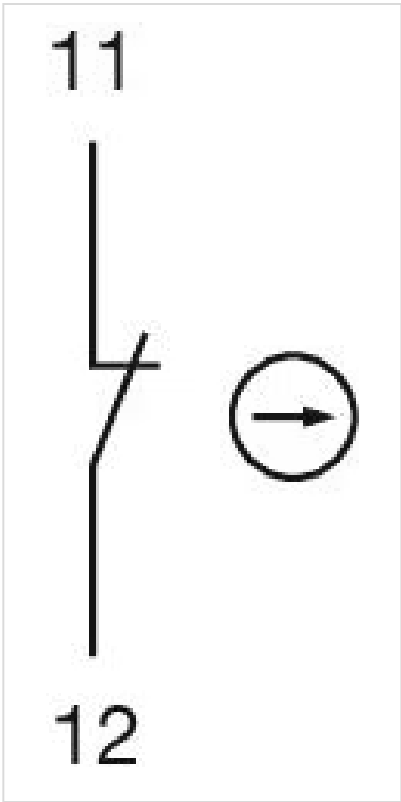
RoHS: RoHS compliant

OTHER

Short Description: Switching element, Slow-make switching element, 50 V AC/DC @ 0,3 A, Gold, 1 NC, Plug-in terminal, 2.8 x 0.5 mm

Material: Plastic, according to UL 94 V0

Wiring diagrams:



Component layouts:

