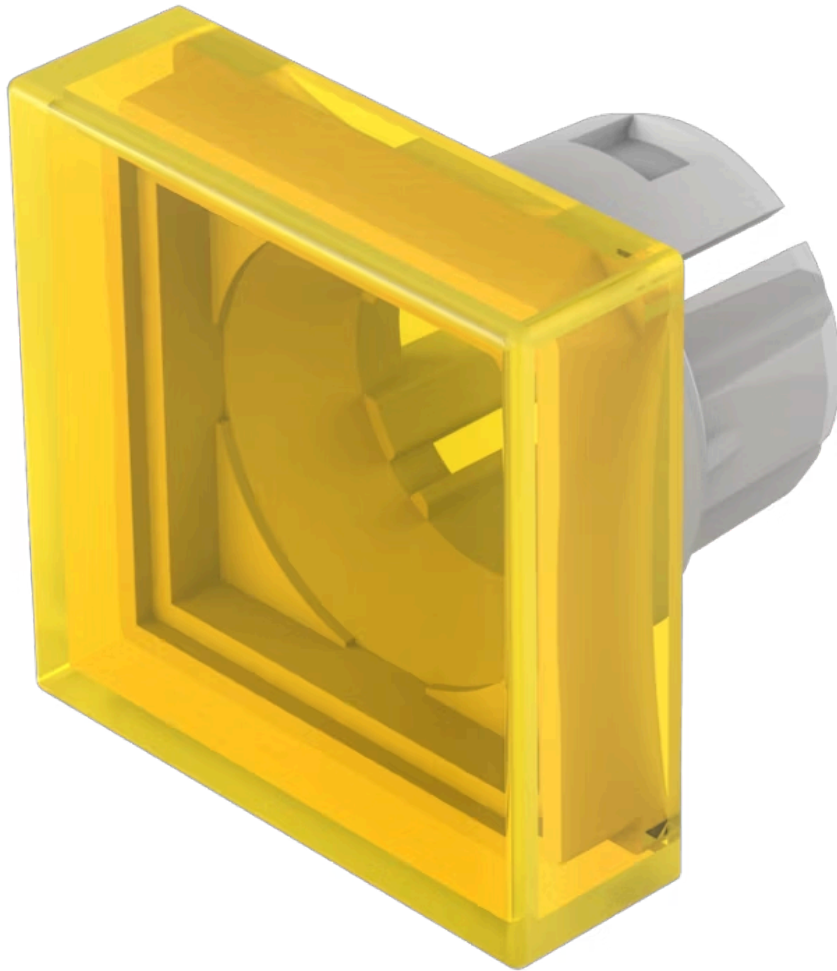


# Lens

61-  
9351.4

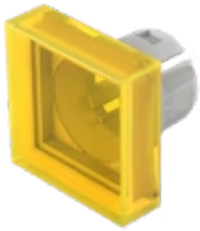
Distribution by  
Mouser



<https://mouser.eao.com/component/61-9351.4/en...>

Your product:

---



## 61-9351.4 Lens

*Loading ...*

### FRONT

**Front form:** Square

### OPERATING-/INDICATION PART

**Lens colour:** Yellow

**Lens material:** Plastic, according to UL 94 HB

**Lens illumination:** Illuminated

**Lens shape:** Flush

**Lens optics:** transparent

### MECHANICAL CHARACTERISTICS

**Weight:** 0.002 kg

### CERTIFICATE

**REACH:** REACH compliant

**RoHS:** RoHS compliant

### OTHER

**Short Description:** Lens, 20 mm x 20 mm, Illuminated, Yellow, Flush, Plastic, according to UL 94 HB

**Dimension:** 20 mm x 20 mm