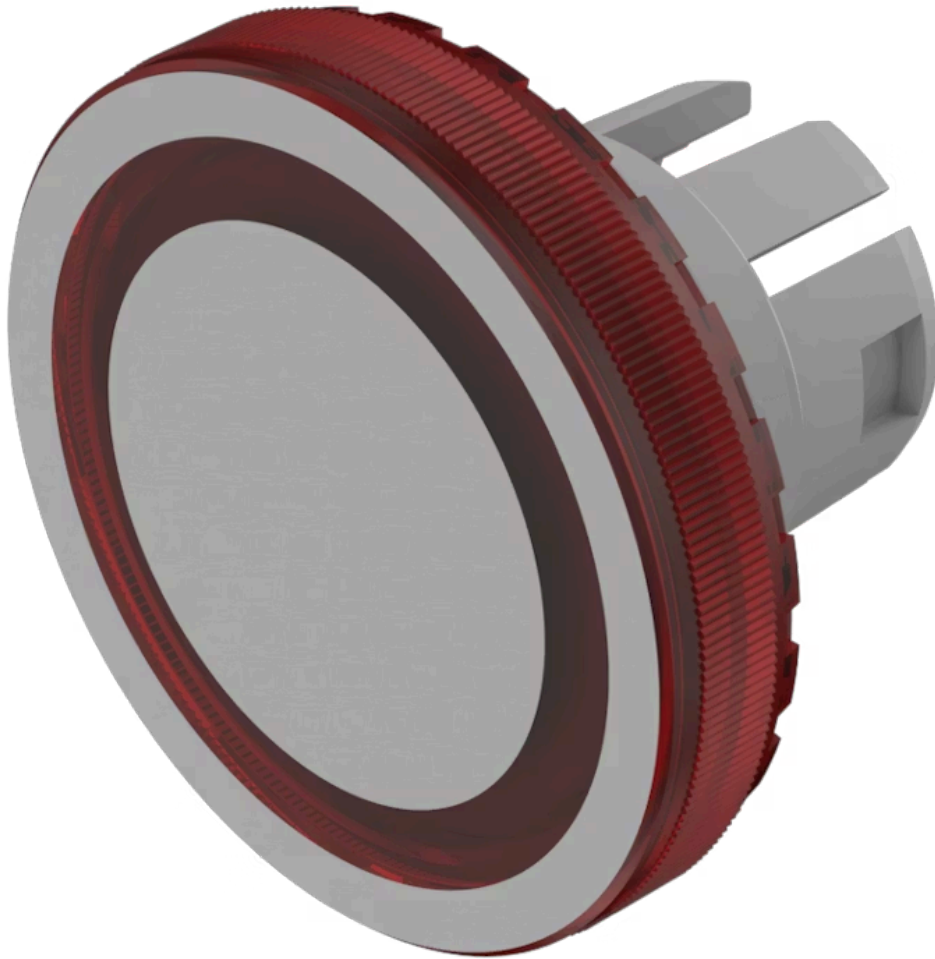


Lens

61-
9643.201

Distribution by
Mouser



<https://mouser.eao.com/component/61-9643.201/...>

Your product:



61-9643.201 Lens

Loading ...

FRONT

Front form: Round

OPERATING-/INDICATION PART

Lens colour: Red

Lens material: Plastic

Lens illumination: Illuminated

Lens shape: Flush

Lens optics: transparent

Symbol: Ring

Shape of illumination: Ring

MECHANICAL CHARACTERISTICS

Weight: 0.001 kg

CERTIFICATE

REACH: REACH compliant

RoHS: RoHS compliant

OTHER

Short Description: Lens, Ø 19.7 mm, Illuminated, Ring, Red, Flush, Plastic

Dimension: Ø 19.7 mm

Hints: The silvery coat is being applied on the lens (screen print) with an additional protective lacquer. Further information see Technical data

Chemical and mechanical tests:

1. Wipe resistance according to EN 61058-1 section 8.9 (Petrol/gasoline, distilled water, diluted alcohol)
2. Graffiti-Killer Test
3. Railway cleaning agents (Walo)
4. Damp/dry heat durability
5. UV test according to EN 60068-2-5/56 days