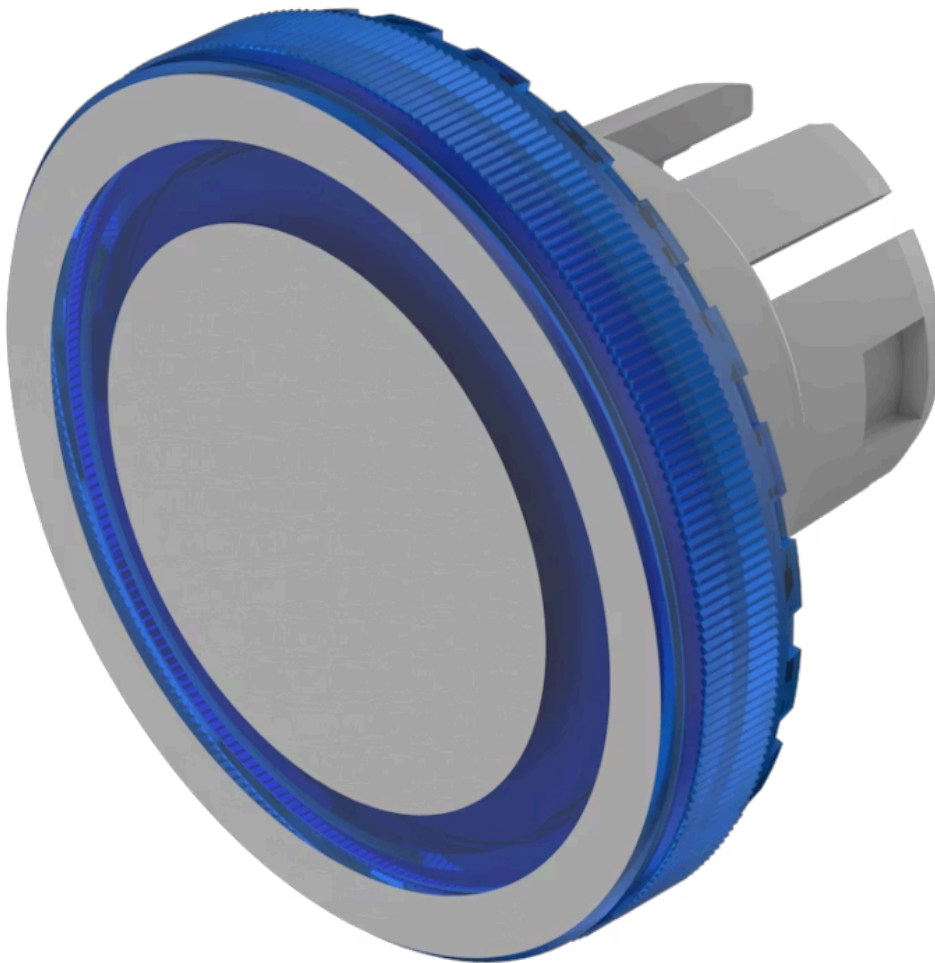


# Lens

61-  
9643.601

Distribution by  
Mouser



<https://mouser.eao.com/component/61-9643.601/...>

Your product:

---



## 61-9643.601 Lens

### FRONT

**Front form:** Round

### OPERATING-/INDICATION PART

**Lens colour:** Blue

**Lens material:** Plastic

**Lens illumination:** Illuminated

**Lens shape:** Flush

**Lens optics:** transparent

**Symbol:** Ring

**Shape of illumination:** Ring

### MECHANICAL CHARACTERISTICS

**Weight:** 0.001 kg

### CERTIFICATE

**REACH:** REACH compliant

**RoHS:** RoHS compliant

### OTHER

**Short Description:** Lens, Ø 19.7 mm, Illuminated, Ring, Blue, Flush, Plastic

**Dimension:** Ø 19.7 mm

**Hints:** The silvery coat is being applied on the lens (screen print) with an additional protective lacquer. Further information see Technical data

Chemical and mechanical tests:

1. Wipe resistance according to EN 61058-1 section 8.9 (Petrol/gasoline, distilled water, diluted alcohol)
2. Graffiti-Killer Test
3. Railway cleaning agents (Walo)
4. Damp/dry heat durability
5. UV test according to EN 60068-2-5/56 days