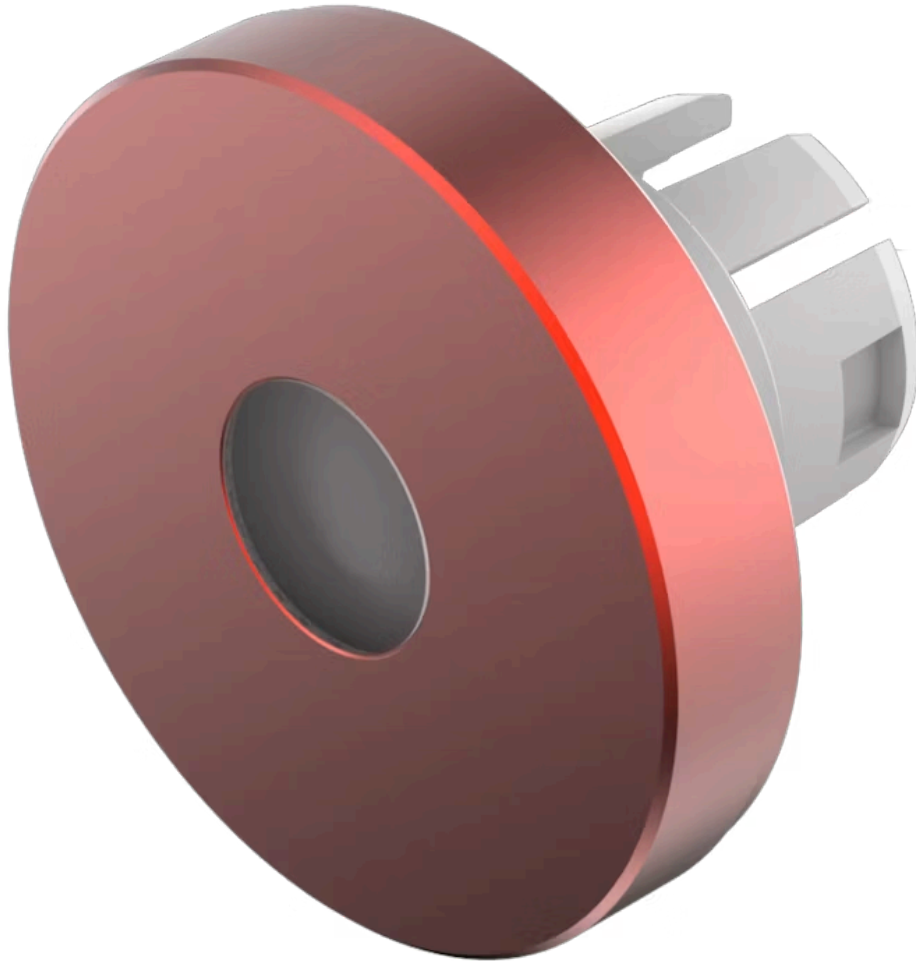


Lens

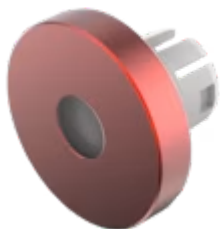
61-
9841.2A

Distribution by
Mouser



<https://mouser.eao.com/component/61-9841.2A/e...>

Your product:



61-9841.2A Lens

Loading ...

FRONT

Front form: Round

OPERATING-/INDICATION PART

Lens colour: Red

Lens material: Aluminium

Lens illumination: Illuminated

Lens shape: Flush

Lens optics: opaque

Shape of illumination: Dot

MECHANICAL CHARACTERISTICS

Weight: 0.002 kg

CERTIFICATE

REACH: REACH compliant

RoHS: RoHS compliant

OTHER

Short Description: Lens, Ø 19.7 mm, Illuminated, Red, Flush, Aluminium

Dimension: Ø 19.7 mm

Hints: The colour of anodised aluminium parts can vary due to technical production reasons