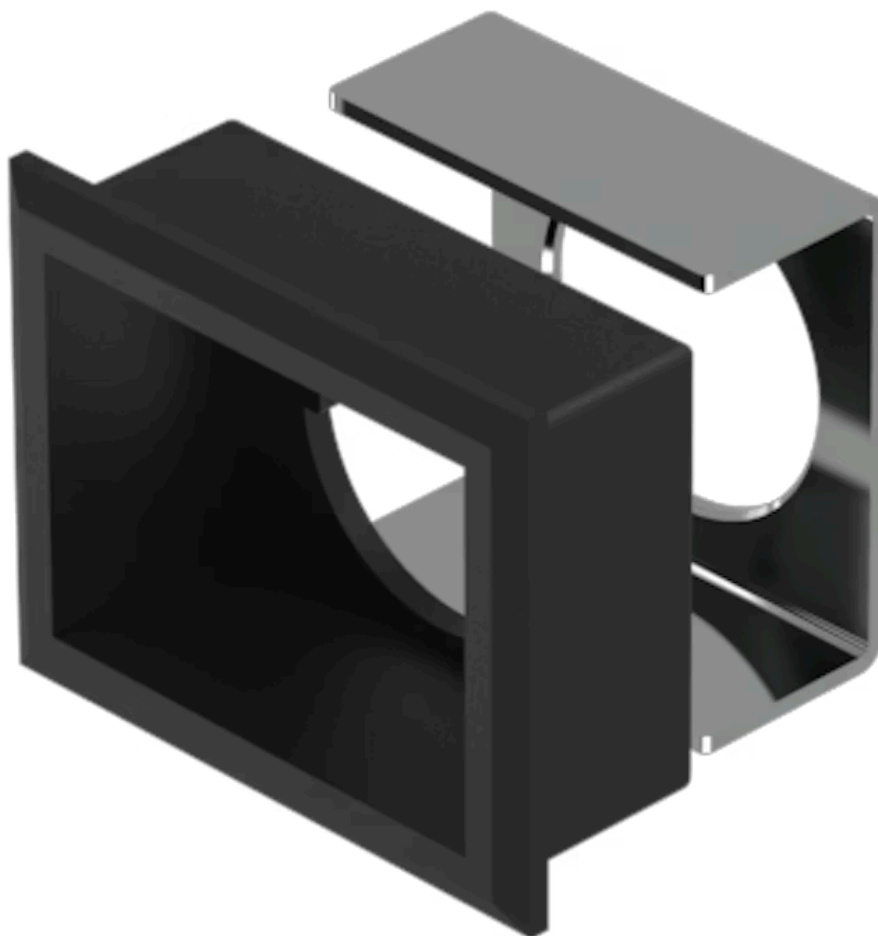


# Front bezel set

61-9931.0

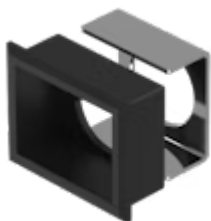
Distribution by  
Mouser



<https://mouser.eao.com/component/61-9931.0/en...>

Your product:

---



## 61-9931.0 Front bezel set

### FRONT

|                       |                                |
|-----------------------|--------------------------------|
| Front dimension:      | 30 mm x 24 mm                  |
| Front form:           | Rectangular                    |
| Front bezel colour:   | Black                          |
| Front bezel material: | Plastic, according to UL 94 V0 |

### MOUNTING

|                   |                |
|-------------------|----------------|
| Mounting cut-out: | 27 mm x 21 mm  |
| Mounting type:    | Panel mounting |

### MECHANICAL CHARACTERISTICS

|         |          |
|---------|----------|
| Weight: | 0.002 kg |
|---------|----------|

### CERTIFICATE

|        |                 |
|--------|-----------------|
| REACH: | REACH compliant |
| RoHS:  | RoHS compliant  |

### OTHER

|                     |  |
|---------------------|--|
| Short Description:  | Front bezel set, 30 mm x 24 mm, 24 mm x 18 mm, Black, Plastic, according to UL 94 V0 |
| Dimension:          | 30 mm x 24 mm  |
| Internal size:      | 24 mm x 18 mm  |
| Product attributes: | For indicator illuminated pushbutton and keylock switch                              |
| Mounting cut-outs:  |  |

