

# Switching element

70-101.0

Distribution by  
Mouser



<https://mouser.eao.com/component/70-101.0/en/...>

Your product:

---



## 70-101.0

### Switching element

#### ELECTRICAL CHARACTERISTICS

**Switching voltage and switching current:**

max. 12 VDC, 50 mA  
min. 1 VDC, 10 mA

**Contacts:**

1 NO

**Switching rating:**

42 V @ 0,1 A

**Electrical lifetime:**

500 000 cycles of operation at 5VDC, 1mA

**Electric strength:**

250 VAC, 1 minute

#### MECHANICAL CHARACTERISTICS

**Terminal:**

PCB terminal

**Contact material:**

Silver

**Switching action:**

Momentary

**Switching system:**

Short-travel element

**Switching system:**

Short-travel snap-action switching system with two independent contact points and tactile operation  
Guarantees reliable switching even of very light loads.  
1 normally open contact

**Mechanical lifetime:**

500 000 cycles of operation with decor foil

**Operating force:**

5 N  $\pm$  2 N with decor foil, >50 N max. on button centre with test plunger, according to DIN 42115

**Operating Travel:**

0.3 mm

**Weight:**

0.001 kg

#### AMBIENT CONDITION

**IP Protection:**

IP65 (front side with overlay foil)

**Operating temperature:**

- 20 °C ... + 70 °C

**Storage temperature:** – 30 °C ... + 85 °C

## CERTIFICATE

**Conformities:** CE, UKCA, 2011 / 65 / EC (RoHS)

**REACH:** REACH compliant

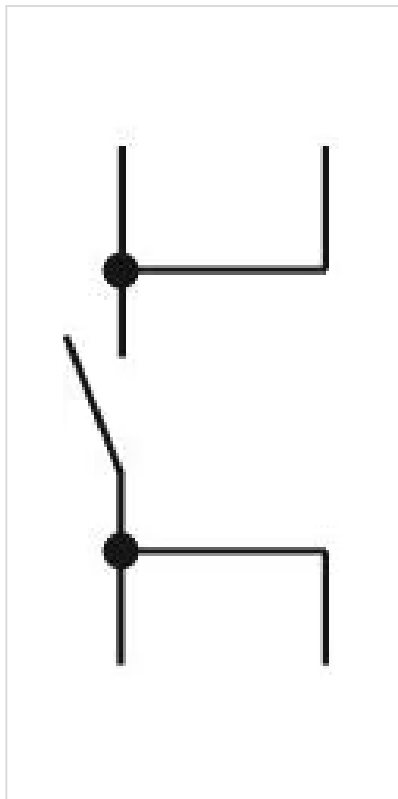
**RoHS:** RoHS compliant

## OTHER

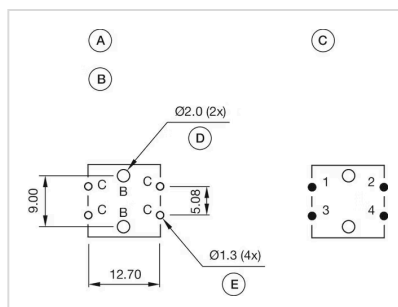
**Short Description:** Switching element, Short-travel element, 42 V @ 0,1 A, Silver, 1 NO, PCB terminal

**Product attributes:** Operation with spacing cap

**Wiring diagrams:**



**Component layouts:**



A = Switching element without illumination with  
B = Drilling plan (component side)  
C = Occupancy plan (component side)  
D = Hole for centering pins non-metallic  
E = Hole for switching element

**Dimension drawings:**

