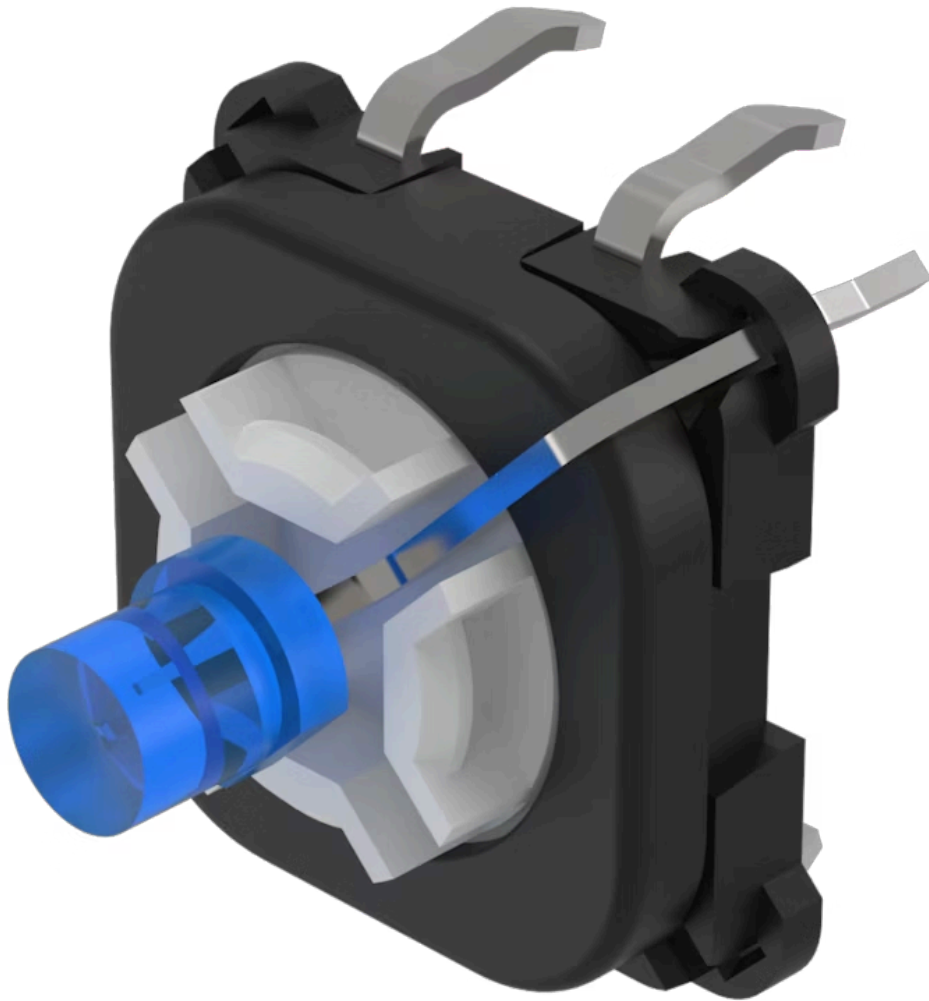


Switching element

70-220.6S

Distribution by
Mouser



<https://mouser.eao.com/component/70-220.6S/en...>

Your product:



70-220.6S Switching element

Loading ...

OPERATING-/INDICATION PART

Illumination colour: Blue

ELECTRICAL CHARACTERISTICS

Contacts: 1 NO

Switching rating: 42 V DC @ 0,1 A

Lumi. Intensity: 250 mcd

MECHANICAL CHARACTERISTICS

Terminal: PCB terminal

Contact material: Gold

Switching action: Momentary

Switching system: Short-travel element

Weight: 0.001 kg

CERTIFICATE

REACH: REACH compliant

RoHS: RoHS compliant

OTHER

Short Description: Switching element, Short-travel element, 42 V DC @ 0,1 A, Gold, 1 NO, PCB terminal

Hints: The customer has to decide what series resistor shall be used to the LED

Wiring diagrams:

