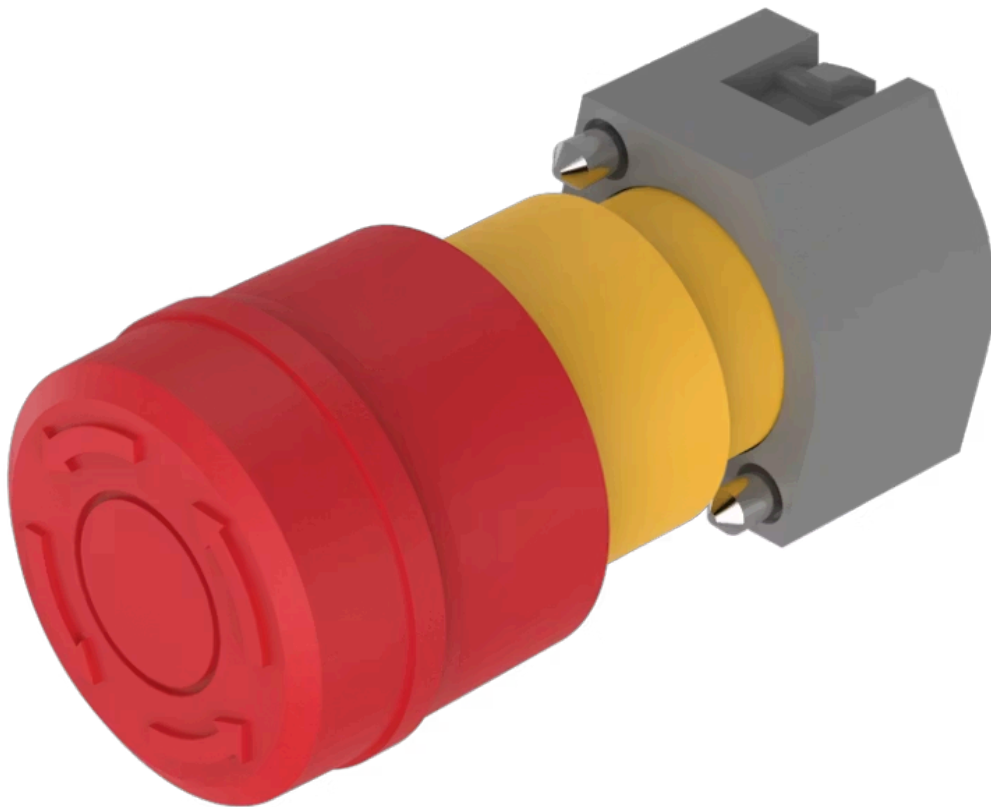


Actuator

704.064.2

Distribution by
Mouser



<https://mouser.eao.com/component/704.064.2/en...>

Your product:



704.064.2 Actuator

Loading . . .

FRONT

Front dimension: Ø 37 mm

Front form: Round

MOUNTING

Design: Raised

Mounting type: Panel mounting

OPERATING-/INDICATION PART

Lens colour: Red

Lens material: Plastic

Lens illumination: Non illuminated

Lens shape: Mushroom-head

Lens optics: opaque

ELECTRICAL CHARACTERISTICS

Standards: The switches comply with the "Standards for low-voltage switching devices" DIN EN 60947-1

MECHANICAL CHARACTERISTICS

Switching action: Maintained

Release type: Twist to unlock

Mechanical lifetime: ≤50 000 cycles of operation

Operating force: 8 N

Operating Travel: ca. 5.8 mm ± 0.2 mm

Weight: 0.048 kg

AMBIENT CONDITION

IP Protection: IP65 front side

Operating temperature: – 40 °C ... + 55 °C

Storage temperature: – 40 °C ... + 85 °C

CERTIFICATE

REACH: REACH compliant

RoHS: RoHS compliant

OTHER

Short Description: Actuator, Ø 37 mm, Mushroom-head, Non illuminated, Red, Plastic, opaque, Round, Maintained, Twist to unlock

Housing colour: Yellow

Housing material: Plastic

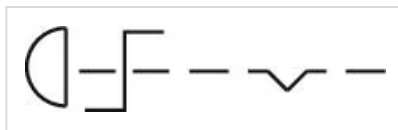
Marking: Arrows

Product attributes: Twist to unlock clockwise

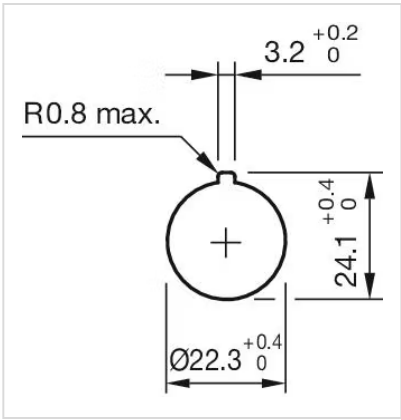
Hints: Shaft yellow

max. number of switching elements: 2

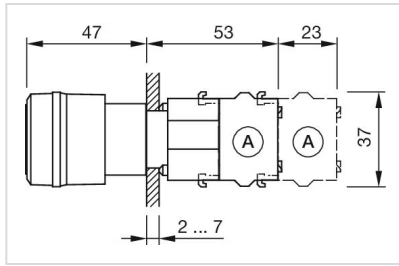
Wiring diagrams:



Mounting cut-outs:



Dimension drawings:



A = Screw terminal