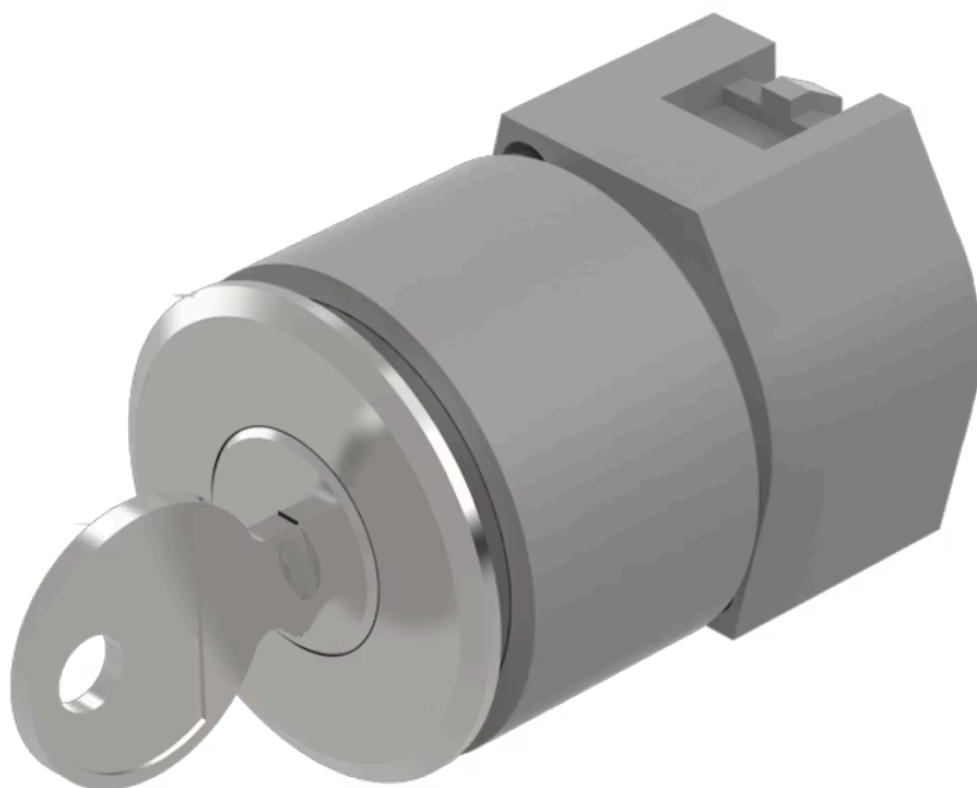


# Actuator

704.117.018

Distribution by  
Mouser



<https://mouser.eao.com/component/704.117.018/...>

Your product:

---



## 704.117.018 Actuator

### FRONT

|                       |           |
|-----------------------|-----------|
| Front dimension:      | Ø 35 mm   |
| Front form:           | Round     |
| Front bezel colour:   | Nature    |
| Front bezel material: | Aluminium |

### MOUNTING

|                   |                |
|-------------------|----------------|
| Design:           | Flush          |
| Mounting cut-out: | Ø 30.5 mm      |
| Mounting type:    | Panel mounting |

### ELECTRICAL CHARACTERISTICS

|            |   |
|------------|---|
| Standards: | The switches comply with the "Standards for low-voltage switching devices" DIN EN 60947-1 |
|------------|---|

### MECHANICAL CHARACTERISTICS

|                      |                                   |
|----------------------|-----------------------------------|
| Switching action:    | Maintained (a) - Rest - Momentary |
| Switching positions: | 3 positions                       |
| Switching angle:     | 42° left / 42° right              |
| Mechanical lifetime: | ≤50 000 cycles of operation       |
| Weight:              | 0.101 kg                          |

### AMBIENT CONDITION

|                |                 |
|----------------|-----------------|
| IP Protection: | IP65 front side |
|----------------|-----------------|

**Operating temperature:** – 40 °C ... + 55 °C

**Storage temperature:** – 40 °C ... + 85 °C

## CERTIFICATE

**REACH:** REACH compliant

**RoHS:** RoHS compliant

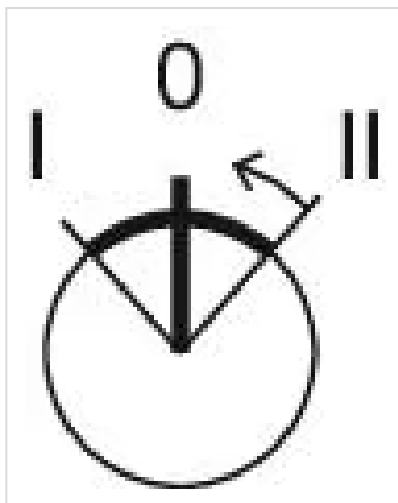
## OTHER

**Short Description:** Actuator, Ø 30.5 mm, Ø 35 mm, Round, Nature, Aluminium, Maintained (a) - Rest - Momentary

**Hints:** The standard lock Ronis 251  
Further lock numbers on request  
Max. 3 switching elements can be clipped on

**max. number of switching elements:** 3

**Switching positions:**



**Wiring diagrams:**

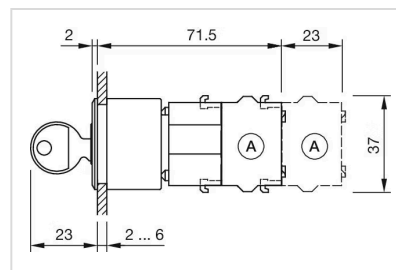


**Mounting cut-outs:**



A = Screw terminal  
 B = Push-in terminal (PIT)  
 C = Plug-in terminal 6.3 mm x 0.8 mm  
 D = Double plug-in terminal 6.3 mm x 0.8 mm

#### Dimension drawings:



A = Screw terminal