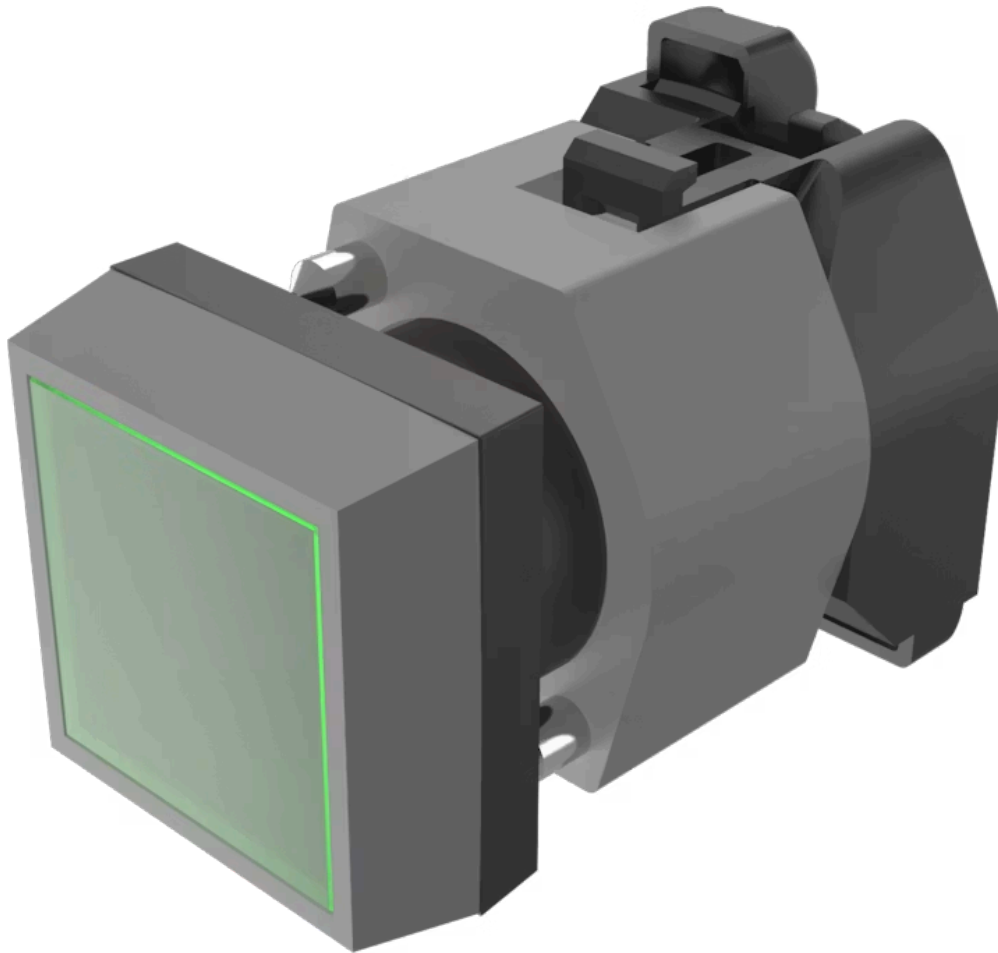


# Actuator

704.202.5

Distribution by  
Mouser



<https://mouser.eao.com/component/704.202.5/en...>

Your product:

---



## 704.202.5 Actuator

*Loading ...*

### FRONT

|                              |               |
|------------------------------|---------------|
| <b>Front dimension:</b>      | 30 mm x 30 mm |
| <b>Front form:</b>           | Square        |
| <b>Front bezel colour:</b>   | Grey          |
| <b>Front bezel material:</b> | Plastic       |

### MOUNTING

|                       |                |
|-----------------------|----------------|
| <b>Design:</b>        | Raised         |
| <b>Mounting type:</b> | Panel mounting |

### OPERATING-/INDICATION PART

|                                    |              |
|------------------------------------|--------------|
| <b>Lens colour:</b>                | Green        |
| <b>Lens material:</b>              | Plastic      |
| <b>Lens shape:</b>                 | Flush        |
| <b>Lens optics:</b>                | transparent  |
| <b>Marking plate colour:</b>       | White        |
| <b>Marking plate optics:</b>       | translucent  |
| <b>Marking plate illumination:</b> | illuminative |

### ELECTRICAL CHARACTERISTICS

|                   |   |
|-------------------|---|
| <b>Standards:</b> | The switches comply with the "Standards for low-voltage switching devices" DIN EN 60947-1 |
|-------------------|---|

### MECHANICAL CHARACTERISTICS

**Terminal:** Screw terminal

**Weight:** 0.04 kg

### **AMBIENT CONDITION**

**IP Protection:** IP65 front side

**Operating temperature:** - 40 °C ... + 55 °C

**Storage temperature:** - 40 °C ... + 85 °C

### **CERTIFICATE**

**REACH:** REACH compliant

**RoHS:** RoHS compliant

### **OTHER**

**Short Description:** Actuator, 30 mm x 30 mm, Flush, Green, Plastic, transparent, Square, Grey, Plastic, Screw terminal

**Housing colour:** Black

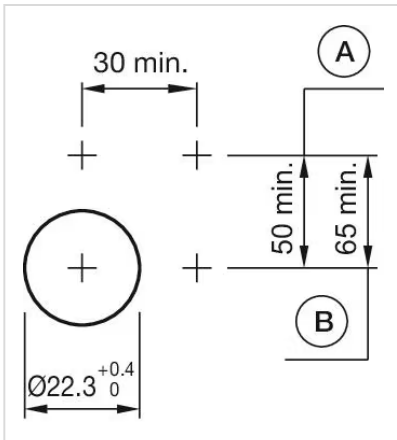
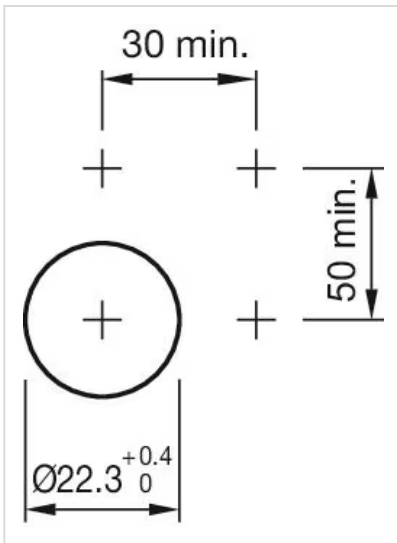
**Housing material:** Plastic

**Hints:** Filament lamp or LED

**Wiring diagrams:**

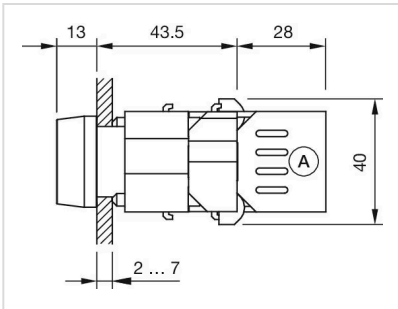
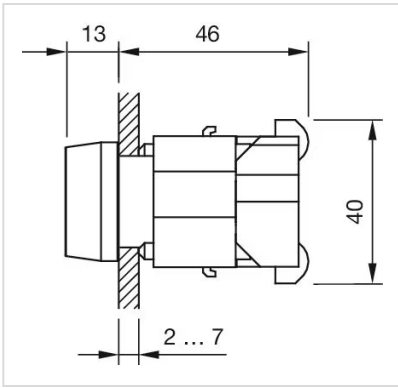


**Mounting cut-outs:**



A = Screw terminal  
 B = Push-in terminal (PIT)

**Dimension drawings:**



A = Screw terminal