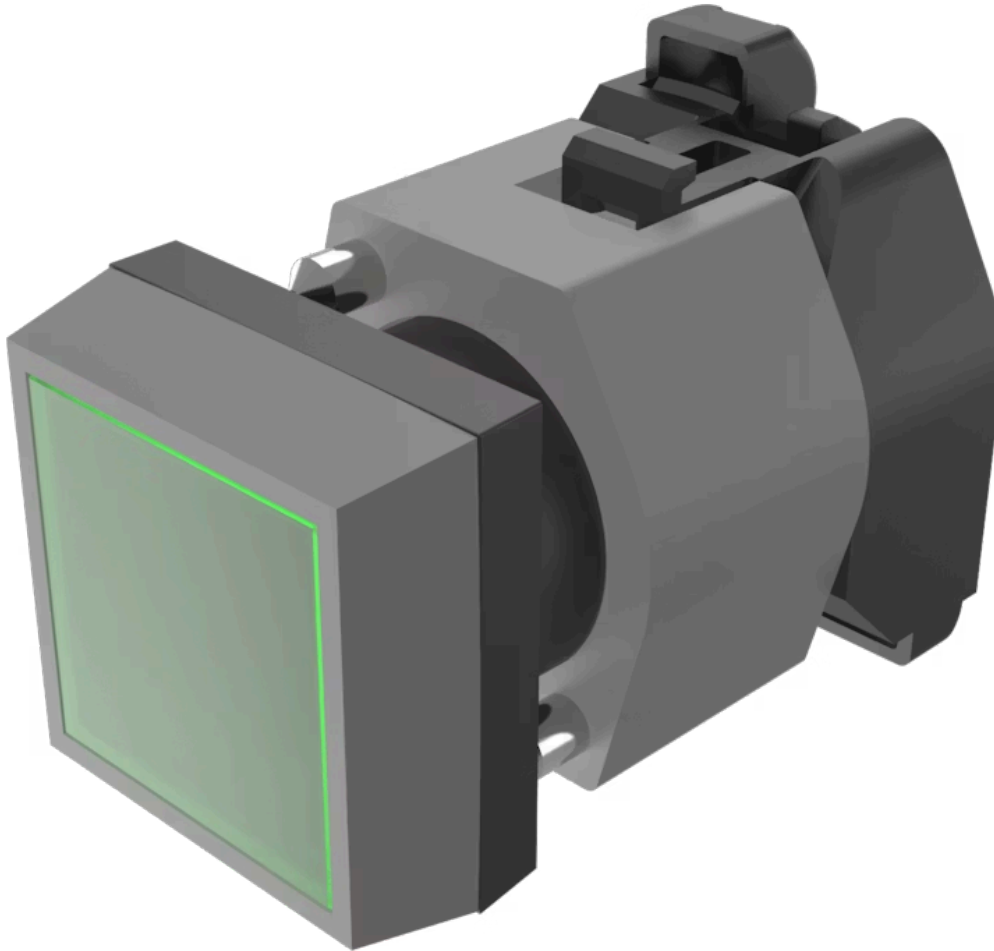


# Actuator

704.203.5

Distribution by  
Mouser



<https://mouser.eao.com/component/704.203.5/en...>

Your product:

---



# 704.203.5 Actuator

## PRODUCT RANGE

**Product Status:** Phase-out

## FRONT

**Front dimension:** 30 mm x 30 mm

**Front form:** Square

**Front bezel colour:** Grey

**Front bezel material:** Plastic

## MOUNTING

**Design:** Raised

**Mounting type:** Panel mounting

## OPERATING-/INDICATION PART

**Lens colour:** Green

**Lens material:** Plastic

**Lens shape:** Flush

**Lens optics:** transparent

**Marking plate colour:** Colourless

**Marking plate optics:** transparent

**Marking plate illumination:** illuminative

## ELECTRICAL CHARACTERISTICS

<b>Standards:</b>	The switches comply with the "Standards for low-voltage switching devices" DIN EN 60947-1
-------------------	---

## **MECHANICAL CHARACTERISTICS**

<b>Terminal:</b>	Screw terminal
------------------	----------------

<b>Weight:</b>	0.04 kg
----------------	---------

## **AMBIENT CONDITION**

<b>IP Protection:</b>	IP65 front side
-----------------------	-----------------

<b>Operating temperature:</b>	– 40 °C ... + 55 °C
-------------------------------	---------------------

<b>Storage temperature:</b>	– 40 °C ... + 85 °C
-----------------------------	---------------------

## **CERTIFICATE**

<b>REACH:</b>	REACH compliant
---------------	-----------------

<b>RoHS:</b>	RoHS compliant
--------------	----------------

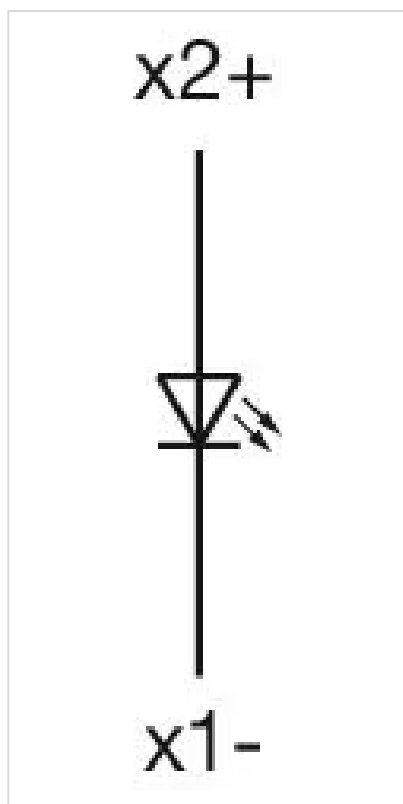
## **OTHER**

<b>Short Description:</b>	Actuator, 30 mm x 30 mm, Flush, Green, Plastic, transparent, Square, Grey, Plastic, Screw terminal
---------------------------	--

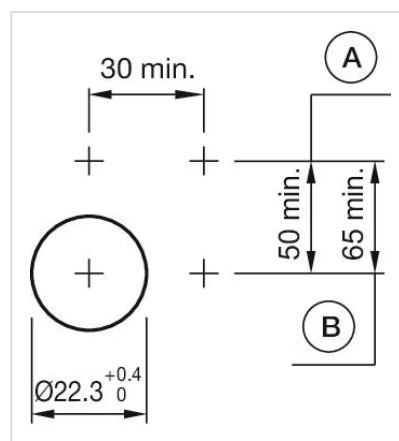
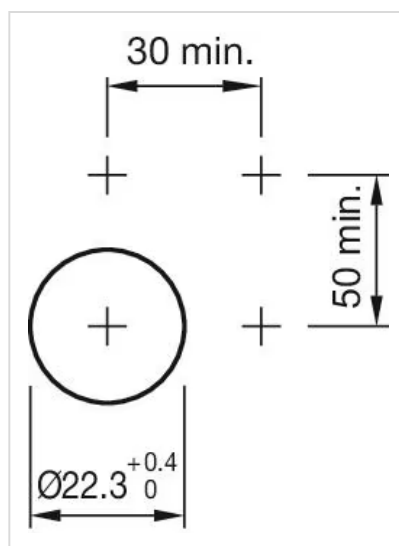
<b>Housing colour:</b>	Black
------------------------	-------

<b>Housing material:</b>	Plastic
--------------------------	---------

<b>Wiring diagrams:</b>	
-------------------------	--



**Mounting cut-outs:**



A = Screw terminal  
B = Push-in terminal (PIT)

**Dimension drawings:**



A = Screw terminal

