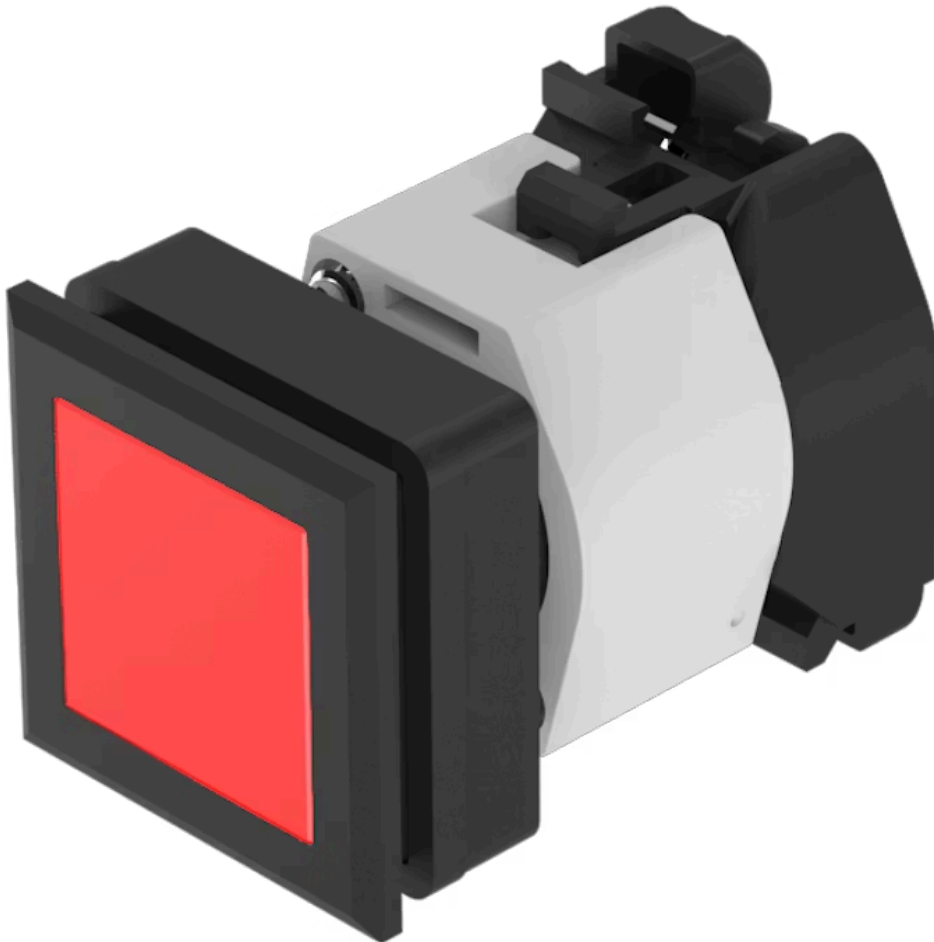


Actuator

704.206.200

Distribution by
Mouser



<https://mouser.eao.com/component/704.206.200/...>

Your product:



704.206.200 Actuator

FRONT

| | |
|------------------------------|---------------|
| Front dimension: | 35 mm x 35 mm |
| Front form: | Square |
| Front bezel colour: | Black |
| Front bezel material: | Plastic |

MOUNTING

| | |
|--------------------------|----------------|
| Design: | Flush |
| Mounting cut-out: | 30 mm x 30 mm |
| Mounting type: | Panel mounting |

OPERATING-/INDICATION PART

| | |
|------------------------------------|--------------|
| Lens colour: | Red |
| Lens material: | Plastic |
| Lens shape: | Flush |
| Lens optics: | transparent |
| Marking plate colour: | White |
| Marking plate optics: | translucent |
| Marking plate illumination: | illuminative |

ELECTRICAL CHARACTERISTICS

| | |
|-------------------|---|
| Standards: | The switches comply with the "Standards for low-voltage switching devices" DIN EN 60947-1 |
|-------------------|---|

MECHANICAL CHARACTERISTICS

| | |
|------------------|----------------|
| Terminal: | Screw terminal |
| Weight: | 0.046 kg |

AMBIENT CONDITION

| | |
|-------------------------------|---------------------|
| IP Protection: | IP65 front side |
| Operating temperature: | - 40 °C ... + 55 °C |
| Storage temperature: | - 40 °C ... + 85 °C |

CERTIFICATE

| | |
|---------------|-----------------|
| REACH: | REACH compliant |
| RoHS: | RoHS compliant |

OTHER

| | |
|---------------------------|--|
| Short Description: | Actuator, 30 mm x 30 mm, 35 mm x 35 mm, Flush, Red, Plastic, transparent, Square, Black, Plastic, Screw terminal |
| Housing colour: | Black |
| Housing material: | Plastic |
| Wiring diagrams: | |

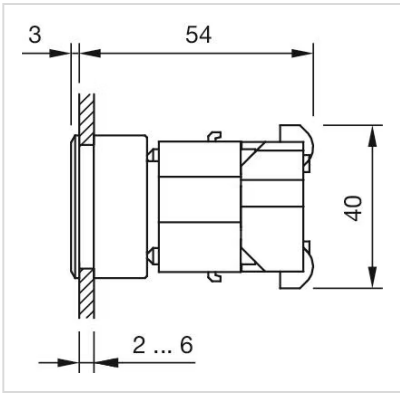


Mounting cut-outs:



A = Screw terminal

Dimension drawings:



A = Screw terminal