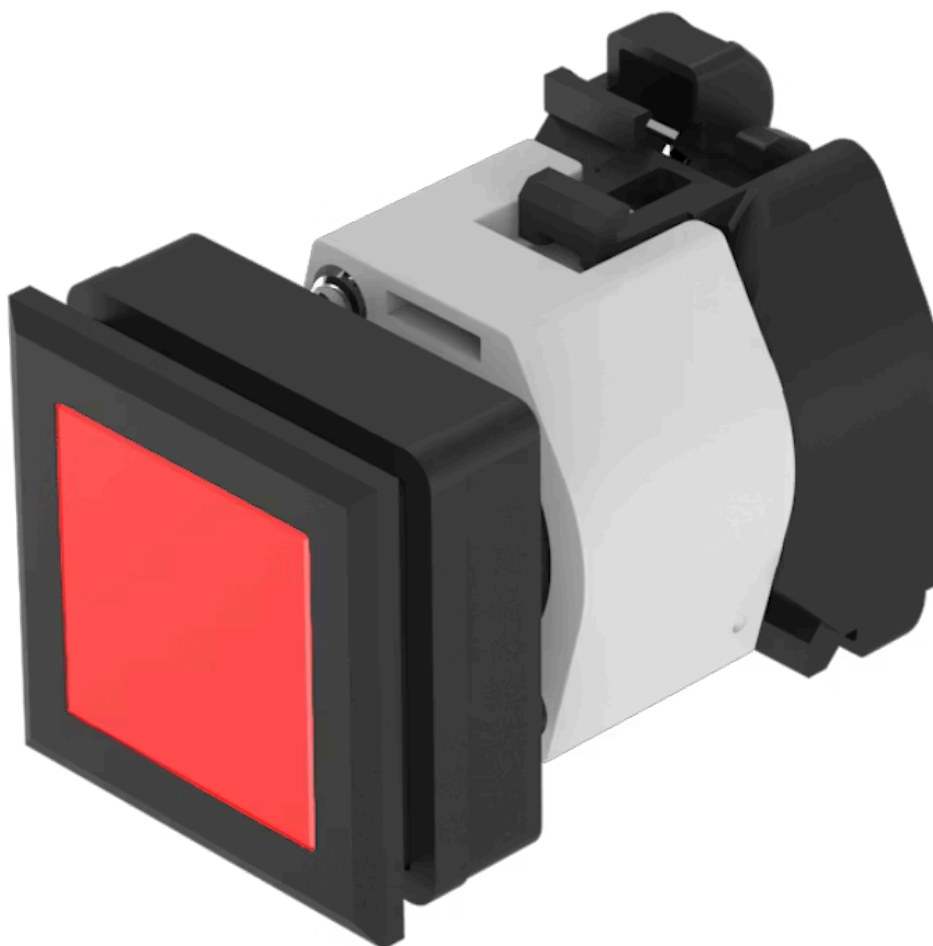


Actuator

704.229.200

Distribution by
Mouser



<https://mouser.eao.com/component/704.229.200/...>

Your product:



704.229.200 Actuator

FRONT

| | |
|-----------------------|---------------|
| Front dimension: | 35 mm x 35 mm |
| Front form: | Square |
| Front bezel colour: | Black |
| Front bezel material: | Plastic |

MOUNTING

| | |
|-------------------|----------------|
| Design: | Flush |
| Mounting cut-out: | 30 mm x 30 mm |
| Mounting type: | Panel mounting |

OPERATING-/INDICATION PART

| | |
|--------------------|-------------|
| Lens colour: | Red |
| Lens material: | Plastic |
| Lens illumination: | Illuminated |
| Lens shape: | Flush |
| Lens optics: | transparent |

ELECTRICAL CHARACTERISTICS

| | |
|------------|---|
| Standards: | The switches comply with the "Standards for low-voltage switching devices" DIN EN 60947-1 |
|------------|---|

MECHANICAL CHARACTERISTICS

| | |
|-------------------|-----------|
| Switching action: | Momentary |
|-------------------|-----------|

| | |
|-----------------------------|-----------------------------|
| Mechanical lifetime: | ≤3 Mil. cycles of operation |
| Operating force: | 6.2 N |
| Operating Travel: | ca. 5.8 mm ± 0.2 mm |
| Weight: | 0.046 kg |

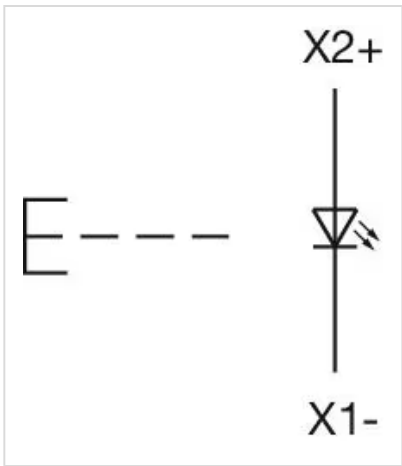
AMBIENT CONDITION

| | |
|-------------------------------|---------------------|
| IP Protection: | IP65 front side |
| Operating temperature: | – 40 °C ... + 55 °C |
| Storage temperature: | – 40 °C ... + 85 °C |

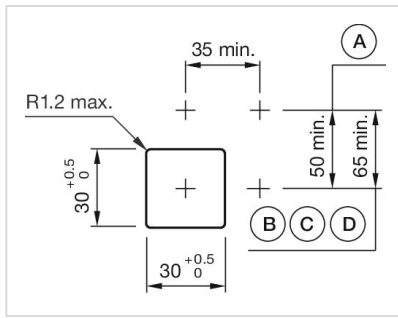
CERTIFICATE

| | |
|---------------|-----------------|
| REACH: | REACH compliant |
| RoHS: | RoHS compliant |

OTHER

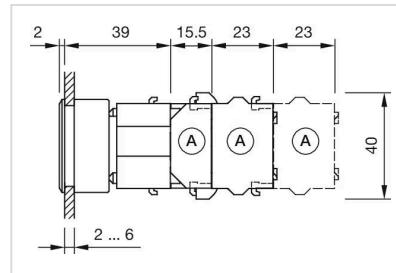
| | |
|---|--|
| Short Description: | Actuator, 30 mm x 30 mm, 35 mm x 35 mm, Flush, Illuminated, Red, Plastic, transparent, Square, Black, Plastic, Momentary |
| Housing colour: | Black |
| Housing material: | Plastic |
| Hints: | Max. 3 switching elements can be clipped on The lamp block will be delivered with screw terminal |
| max. number of switching elements: | 3 |
| Wiring diagrams: |  |

Mounting cut-outs:



A = Screw terminal
 B = Push-in terminal (PIT)
 C = Plug-in terminal 6.3 mm x 0.8 mm
 D = Double plug-in terminal 6.3 mm x 0.8 mm

Dimension drawings:



A = Screw terminal