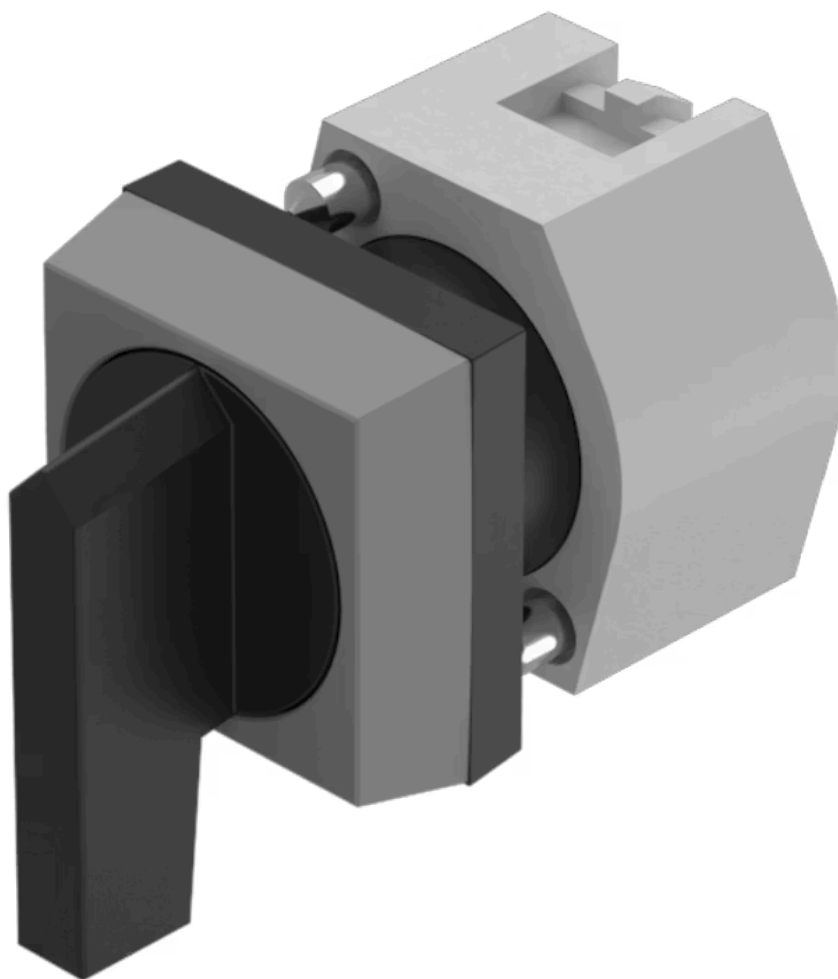


# Actuator

704.300.0

Distribution by  
Mouser



<https://mouser.eao.com/component/704.300.0/en...>

Your product:

---



## 704.300.0 Actuator

### FRONT

|                       |               |
|-----------------------|---------------|
| Front dimension:      | 30 mm x 30 mm |
| Front form:           | Square        |
| Front bezel colour:   | Grey          |
| Front bezel material: | Plastic       |

### MOUNTING

|                   |                |
|-------------------|----------------|
| Design:           | Raised         |
| Mounting cut-out: | Ø 22.5 mm      |
| Mounting type:    | Panel mounting |

### OPERATING-/INDICATION PART

|                   |         |
|-------------------|---------|
| Lever colour:     | Black   |
| Lever bar colour: | Black   |
| Lever material:   | plastic |
| Lever shape:      | long    |

### ELECTRICAL CHARACTERISTICS

|            |   |
|------------|---|
| Standards: | The switches comply with the "Standards for low-voltage switching devices" DIN EN 60947-1 |
|------------|---|

### MECHANICAL CHARACTERISTICS

|                      |                   |
|----------------------|-------------------|
| Switching action:    | Rest - Maintained |
| Switching positions: | 2 positions       |

**Switching angle:** 90° right / -45° ... +45°

**Mechanical lifetime:** ≤2.5 Mil. cycles of operation

**Weight:** 0.031 kg

#### AMBIENT CONDITION

**IP Protection:** IP65 front side

**Operating temperature:** – 40 °C ... + 55 °C

**Storage temperature:** – 40 °C ... + 85 °C

#### CERTIFICATE

**REACH:** REACH compliant

**RoHS:** RoHS compliant

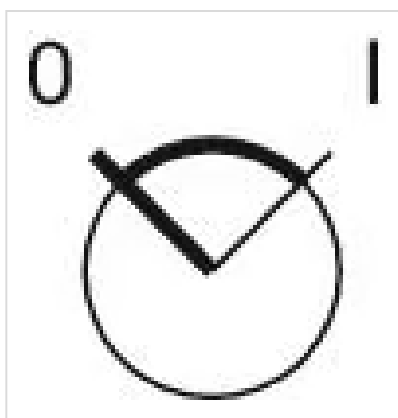
#### OTHER

**Short Description:** Actuator, Ø 22.5 mm, 30 mm x 30 mm, non illuminative, Black, long, Square, Grey, Plastic, Rest - Maintained

**Hints:** Max. 3 switching elements can be clipped on

**max. number of switching elements:** 3

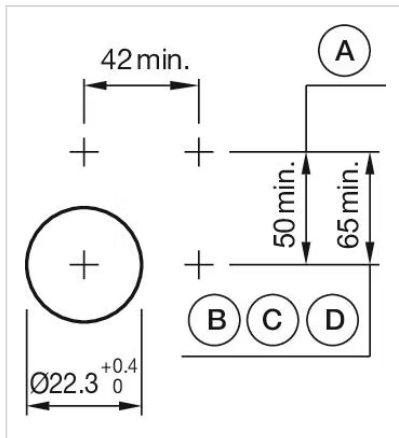
**Switching positions:**



**Wiring diagrams:**

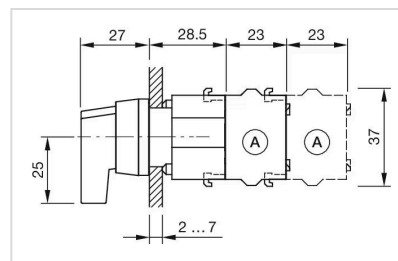


**Mounting cut-outs:**



A = Screw terminal  
 B = Push-in terminal (PIT)  
 C = Plug-in terminal 6.3 mm x 0.8 mm  
 D = Double plug-in terminal 6.3 mm x 0.8 mm

#### Dimension drawings:



A = Screw terminal