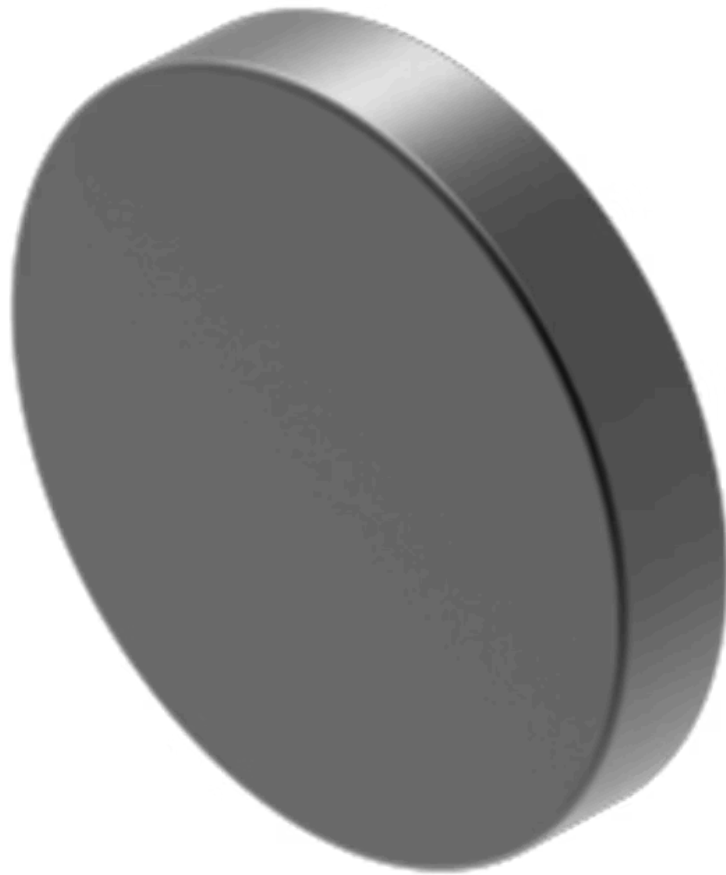


Lens

704.601.0

Distribution by
Mouser



<https://mouser.eao.com/component/704.601.0/en...>

Your product:



704.601.0 Lens

Loading ...

FRONT

Front form: Round

OPERATING-/INDICATION PART

Lens colour: Black

Lens material: Aluminium

Lens illumination: Non illuminated

Lens shape: Flush

Lens optics: opaque

Lens type: Level with front bezel

MECHANICAL CHARACTERISTICS

Weight: 0.002 kg

CERTIFICATE

REACH: REACH compliant

RoHS: RoHS compliant

OTHER

Short Description: Lens, Ø 23.7 mm, Non illuminated, Black, Flush, Aluminium

Dimension: Ø 23.7 mm

Internal size: Ø 20 mm

Hints: The colour of anodised aluminium parts can vary due to technical production reasons

To obtain IP65, it is necessary to use marking plate Part No.. 704.609.X