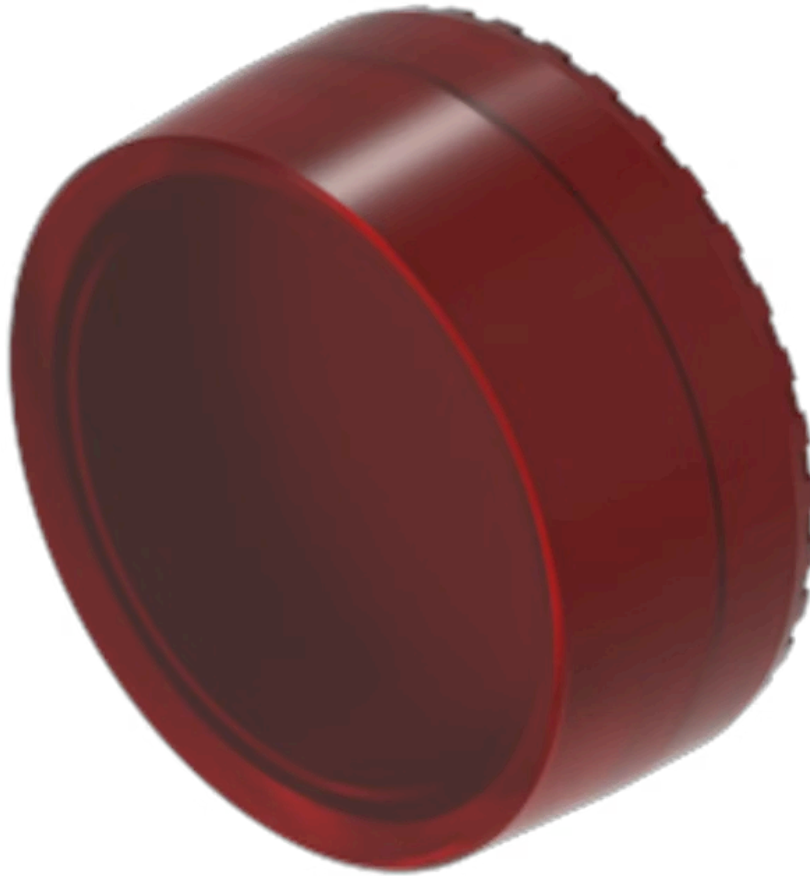


Lens

704.611.2

Distribution by
Mouser



<https://mouser.eao.com/component/704.611.2/en...>

Your product:



704.611.2 Lens

Loading ...

FRONT

Front form: Round

OPERATING-/INDICATION PART

Lens colour: Red

Lens material: Plastic

Lens illumination: Illuminated

Lens shape: Flush

Lens optics: transparent

Lens type: Raised above front bezel

Marking plate illumination: illuminative

Shape of illumination: Front

MECHANICAL CHARACTERISTICS

Weight: 0.002 kg

CERTIFICATE

REACH: REACH compliant

RoHS: RoHS compliant

OTHER

Short Description: Lens, Ø 23.7 mm, Illuminated, Red, Flush, Plastic

Dimension: Ø 23.7 mm

Hints:

To obtain IP67, use marking plate Part Nr. 704.610.X