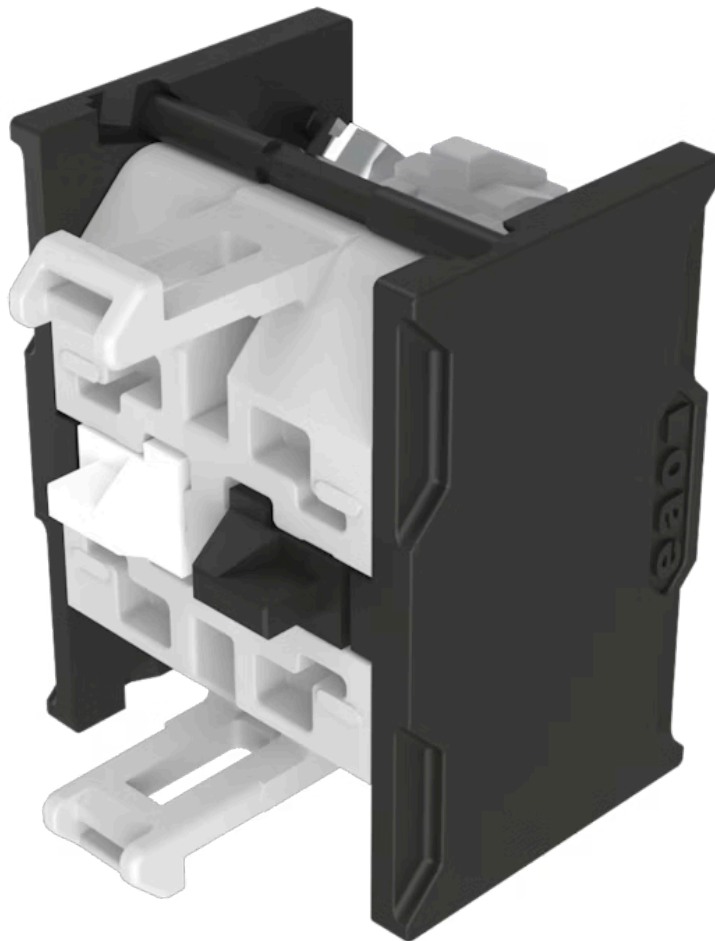


# Switching element - New Version

Distribution by  
Mouser



704.901.5B-1



<https://mouser.eao.com/component/704.901.5B-1...>

Your product:



## 704.901.5B-1 Switching element - New Version

Loading ...

### ELECTRICAL CHARACTERISTICS

#### Switching voltage and switching current:

|   |  |                    |       |
|---|--|--------------------|-------|
| as per DIN EN IEC 60947-5-1   |  |                    |       |
| voltage   |  | DC13               | AC15  |
| 24 V  |  | 2,5 A              |       |
| 60 V  |  | 0,8 A              |       |
| 110 V   |  | 0,6 A              |       |
| 120 V   |  |                    | 4,5 A |
| 230 V   |  | 0,2 A              | 4,5 A |
| 400 V   |  | 0,15 A             | 4,0 A |
| 500 V   |  | 0,7 A              | 2,5 A |
| as per UL 60947-5-1   |  |                    |       |
| voltage   |  | power              |       |
| 24 VDC  |  | 2,5 A, Pilot duty  |       |
| 60 VDC  |  | 0,8 A, Pilot duty  |       |
| 120 VDC   |  | 0,6 A, Pilot duty  |       |
| 240 VDC   |  | 0,2 A, Pilot duty  |       |
| 415 VDC   |  | 0,15 A, Pilot duty |       |
| 480 VDC   |  | 0,07A, Pilot duty  |       |
| 120 VAC   |  | 4,5 A, Pilot duty  |       |
| 240 VAC   |  | 4,5 A, Pilot duty  |       |
| 415 VAC   |  | 4,0 A, Pilot duty  |       |
| 480 VAC   |  | 2,5 A, Pilot duty  |       |
| For voltages greater than $U_e = 400$ V,<br>the grid dimensions must not be<br>less than 35 mm x 50 mm. |  |                    |       |

#### Contacts:

1 NC / 1 NO

#### Rated impulse withstand voltage $U_{imp}$ :

4 kV

#### Rated insulation voltage $U_i$ :

500 V

#### Recommended minimum operational data:

|                      |        |         |         |
|----------------------|--------|---------|---------|
| Gold-silver contacts |        |         |         |
| Voltage              | 5 VDC  | 24 VDC  | 110 VDC |
| Current              | 15 mA  | 5 mA    | 2 mA    |
| Hard silver contacts |        |         |         |
| Voltage              | 24 VDC | 110 VDC |         |
| Current              | 50 mA  | 10 mA   |         |

#### Switching rating:

500 V AC @ 10 A

#### Electrical lifetime:

50 000 cycles of operation (500 VAC, 10 A)

#### Pollution degree:

3

#### Standards:

The switches comply with the "Standards for low-voltage switching devices" DIN EN IEC UL 60947-5-1

**Thermal current I<sub>th</sub>:** Max. current as per EN IEC 60947-5-1 10 A

## MECHANICAL CHARACTERISTICS

**Terminal:** Ring cable lug screw terminal

**Contact material:** Gold

**Switching system:** Snap-action switching element

**Switching system:** The double-break, snap-action switching element is equipped with one or two independent contact systems, acting as normally open or normally closed contact. The snap-action switching element is fitted with self-cleaning contacts.

**Operating force:** 1 Normally closed approx. 1.9 N, 1 Normally open approx. 2 N

**Tightening torque:** Screw terminal 0.8 Nm

**Wire cross section:** Max. wire cross-section 2 mm x 2.5 mm<sup>2</sup>  
Skinning wire 10 mm  
Max. wire cross-section of stranded cable 2 x 1.5 mm<sup>2</sup>  
use stranded wires only with wire end ferrules of 10 mm length  
Only one polarity is allowed on each side when wiring.

**Weight:** 0.027 kg

## AMBIENT CONDITION

**IP Protection:** IP20

**Operating temperature:** – 40 °C ... + 55 °C

**Storage temperature:** – 40 °C ... + 85 °C

**Shock resistance:** (single impacts, semi-sinusoidal) 300 m/s<sup>2</sup>, pulse width 18 ms, as per DIN EN 60068-2-27

**Vibration resistance:** (sinusförmig) 100 m/s<sup>2</sup> bei 10 Hz...500 Hz, nach DIN EN 60068-2-6, Erhöhtes Breitbandrauschen nach DIN EN 61373, Klasse 1B

**Climate resistance:** Relative humidity 10 %rh ... 95 %rh (non-condensing) original packaging according to DIN EN IEC 60721-3-1 Class 1C1

## CERTIFICATE

**Approbations:** CB (IEC 60947-5-1), cULus, DNV, VDE

**Conformities:** CE, CCC, UKCA

**REACH:** REACH compliant

**RoHS:** RoHS compliant

## OTHER

**Short Description:**

Switching element - New Version, Snap-action switching element, 500 V AC @ 10 A, Gold, 1 NC / 1 NO, Ring cable lug screw terminal

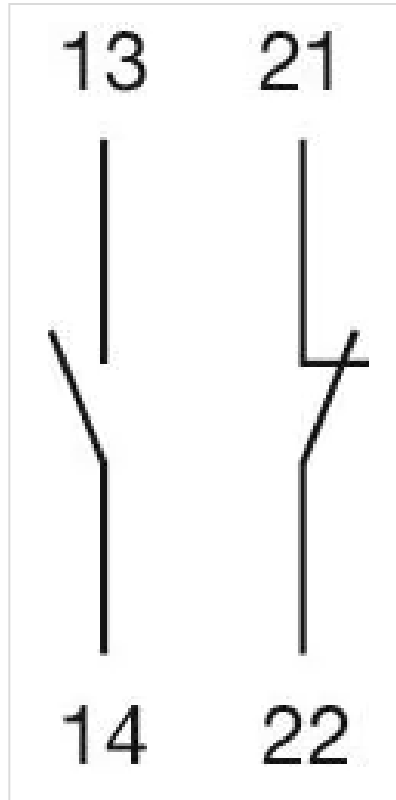
**Hints:**

When using the switching element, the application guidelines must be observed. For the third switching element the terminal marking insert is to be ordered separately

Operating temperature: Other temperatures on request

A suitable enclosure is required for applications with increased protection requirements. In North America, the product must be installed in an enclosure in accordance with UL 50E Type 2 or higher.

**Wiring diagrams:**



**Dimension drawings:**

