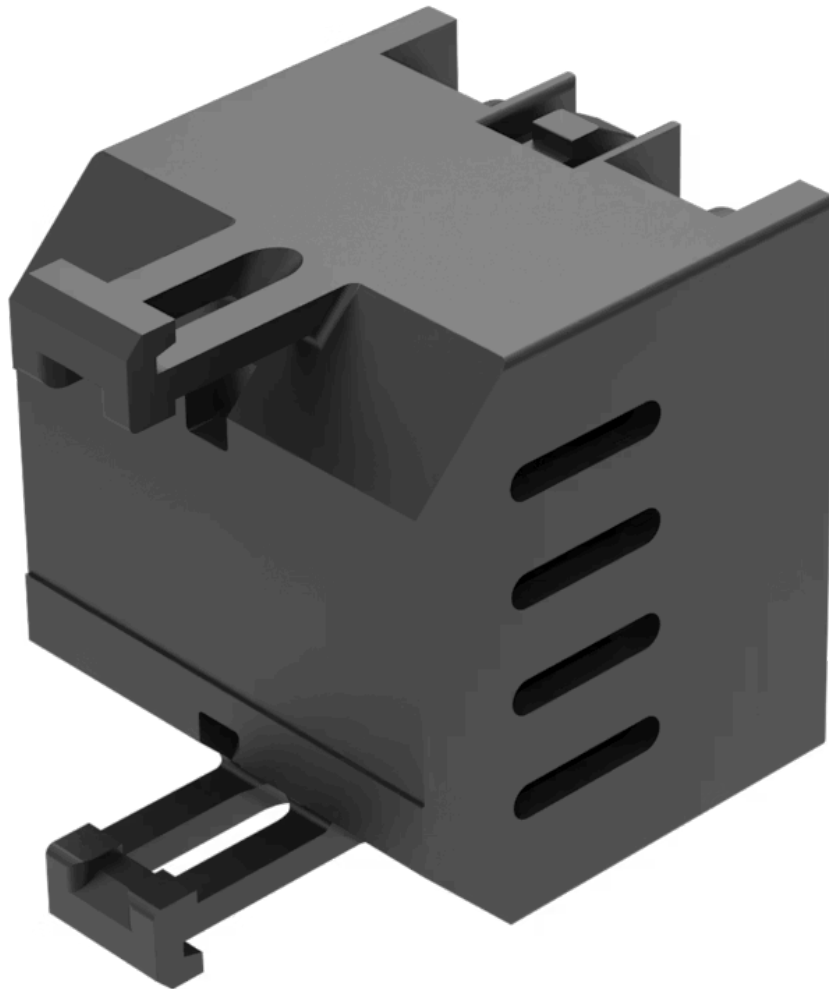


# Resistor-diode element

704.941.9

Distribution by  
Mouser



<https://mouser.eao.com/component/704.941.9/en...>

Your product:



## 704.941.9 Resistor-diode element

*Loading . . .*

### ELECTRICAL CHARACTERISTICS

**Operating voltage:** 130 - 230 V AC

### MECHANICAL CHARACTERISTICS

**Terminal:** Screw terminal

**Weight:** 0.019 kg

### OTHER

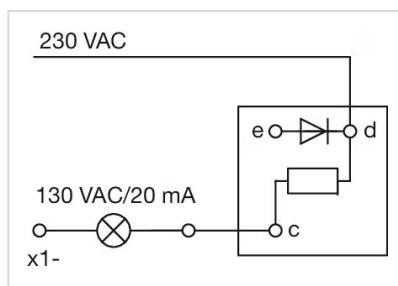
**Short Description:** Resistor-diode element, Plastic, Screw terminal, 130 - 230 V AC

**Titel Accessory:** Resistor-diode element

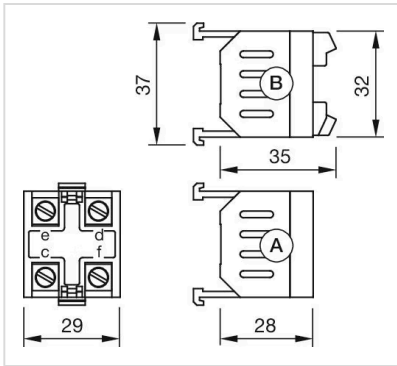
**Material:** Plastic

**Product attributes:** Lamp voltage/-current 130 V, 20 mA

**Wiring diagrams:**



**Dimension drawings:**



A = Screw terminal  
Push-in terminal (PIT)