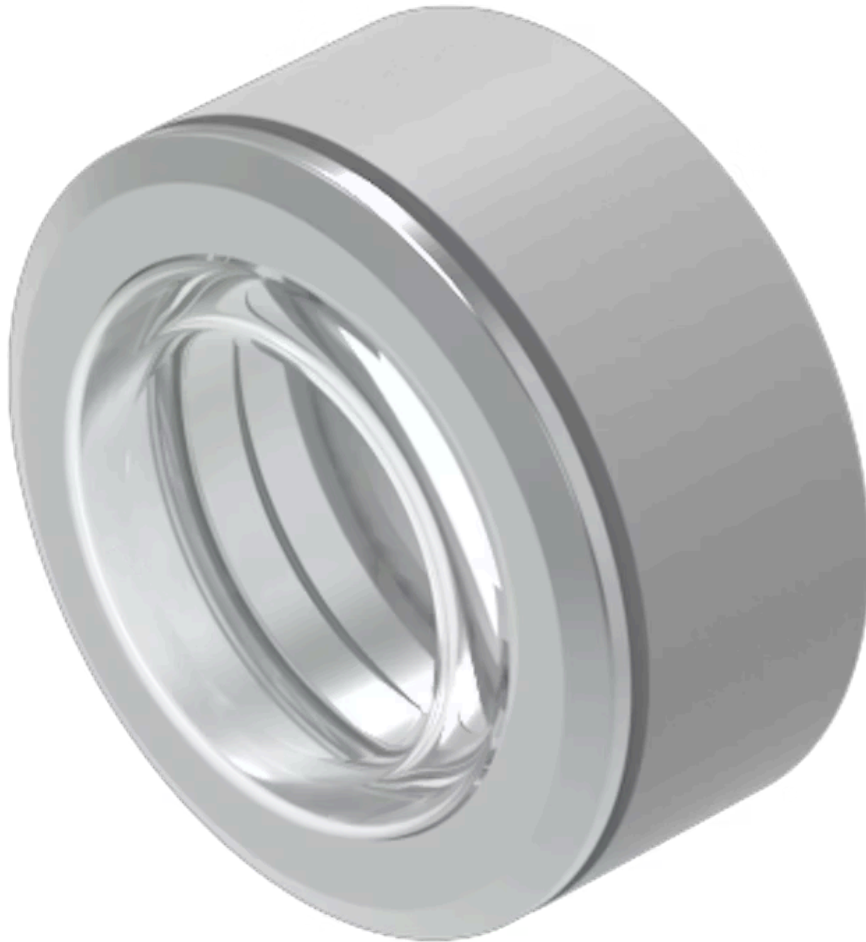


Front bezel set

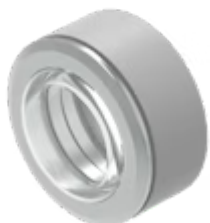
704.955.3

Distribution by
Mouser



<https://mouser.eao.com/component/704.955.3/en...>

Your product:



704.955.3 Front bezel set

Loading ...

FRONT

| | |
|------------------------------|------------------------------------|
| Front dimension: | Ø 35 mm |
| Front form: | Round |
| Front bezel colour: | Nature |
| Front bezel material: | Aluminium |
| Front bezel type: | With transparent silicone membrane |

MOUNTING

| | |
|-----------------------|----------------|
| Mounting type: | Panel mounting |
|-----------------------|----------------|

MECHANICAL CHARACTERISTICS

| | |
|----------------|----------|
| Weight: | 0.015 kg |
|----------------|----------|

CERTIFICATE

| | |
|---------------|-----------------|
| REACH: | REACH compliant |
| RoHS: | RoHS compliant |

OTHER

Short Description: Front bezel set, Ø 35 mm, Nature, Aluminium

Dimension: Ø 35 mm

Product attributes: With transparent silicone membrane

Hints: Front bezel to be mounted with a torque of 0.4 Nm onto actuator
Before assembling remove the flat gasket of the switch
The colour of anodised aluminium parts can vary due to technical production reasons