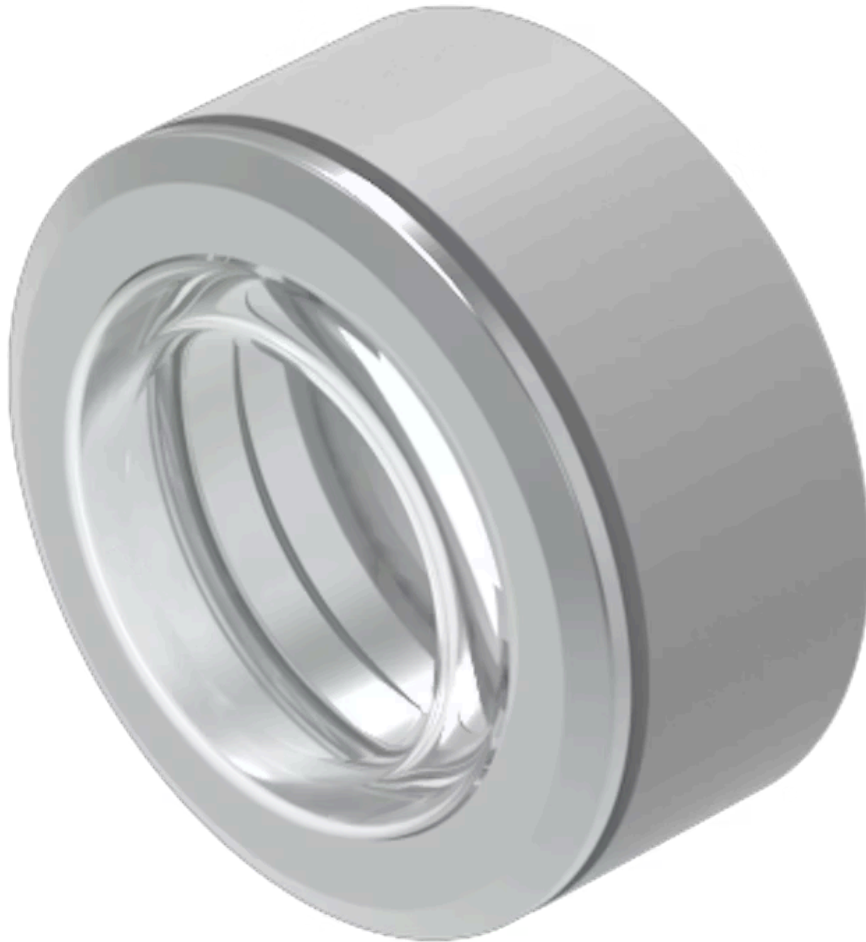


Front bezel

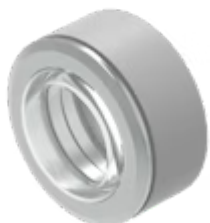
704.955.9E

Distribution by
Mouser



<https://mouser.eao.com/component/704.955.9E/e...>

Your product:



704.955.9E Front bezel

Loading ...

FRONT

Front dimension:	Ø 35 mm
Front form:	Round
Front bezel colour:	Nature
Front bezel material:	Stainless steel
Front bezel type:	With transparent silicone membrane, resistant to sea water

MOUNTING

Mounting type:	Panel mounting
-----------------------	----------------

MECHANICAL CHARACTERISTICS

Weight:	0.031 kg
----------------	----------

CERTIFICATE

REACH:	REACH compliant
RoHS:	RoHS compliant

OTHER

Short Description:	Front bezel, Ø 35 mm, Nature, Stainless steel
Dimension:	Ø 35 mm
Product attributes:	With transparent silicone membrane, resistant to sea water
Hints:	Front bezel to be mounted with a torque of 0.4 Nm onto actuator Before assembling remove the flat gasket of the switch The colour of anodised aluminium parts can vary due to technical production reasons